

Datasheet for ABIN2856129
anti-CSNK1A1L antibody

4 Images

[Go to Product page](#)

Overview

Quantity:	100 µL
Target:	CSNK1A1L
Reactivity:	Human
Host:	Rabbit
Clonality:	Polyclonal
Conjugate:	This CSNK1A1L antibody is un-conjugated
Application:	Western Blotting (WB), Immunofluorescence (IF), Immunohistochemistry (Paraffin-embedded Sections) (IHC (p)), Immunocytochemistry (ICC), Immunohistochemistry (Whole Mount) (IHC (wm))

Product Details

Immunogen:	Recombinant protein encompassing a sequence within the center region of human Casein Kinase 1 alpha 1L. The exact sequence is proprietary.
Isotype:	IgG
Cross-Reactivity:	Human, Rat, Zebrafish (Danio rerio)
Characteristics:	Rabbit Polyclonal antibody to Casein Kinase 1 alpha 1L (casein kinase 1, alpha 1-like) Casein Kinase 1 alpha 1L antibody
Purification:	Purified by antigen-affinity chromatography.

Target Details

Target:	CSNK1A1L
---------	----------

Target Details

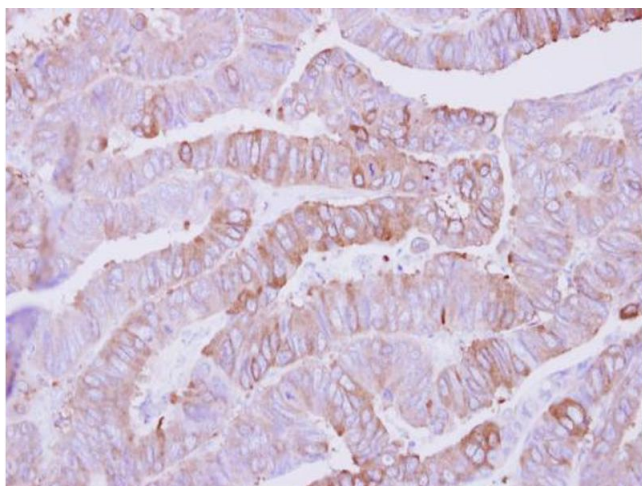
Alternative Name:	casein kinase 1 alpha 1 like (CSNK1A1L Products)
Background:	Casein kinases are operationally defined by their preferential utilization of acidic proteins such as caseins as substrates. It can phosphorylate a large number of proteins. Participates in Wnt signaling. Cellular Localization: Cytoplasm
Molecular Weight:	39 kDa
Gene ID:	122011
UniProt:	Q8N752

Application Details

Application Notes:	WB: 1:500-1:3000. ICC/IF: 1:100-1:1000. IHC-P: 1:100-1:1000. Optimal dilutions/concentrations should be determined by the researcher. Not tested in other applications.
Comment:	Positive Control: A549 , rat thymus
Restrictions:	For Research Use only

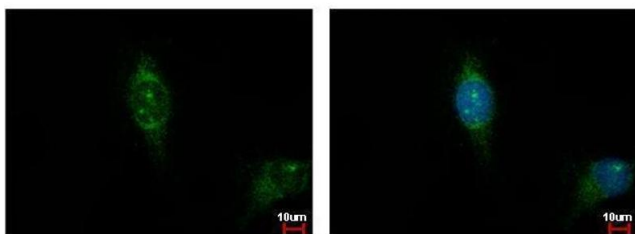
Handling

Format:	Liquid
Concentration:	0.53 mg/mL
Buffer:	1XPBS (pH 7), 1 % BSA, 20 % Glycerol, 0.01 % Thimerosal
Preservative:	Thimerosal (Merthiolate)
Precaution of Use:	This product contains Thimerosal (Merthiolate): a POISONOUS AND HAZARDOUS SUBSTANCE which should be handled by trained staff only.
Storage:	4 °C,-20 °C
Storage Comment:	Store as concentrated solution. Centrifuge briefly prior to opening vial. For short-term storage (1-2 weeks), store at 4°C. For long-term storage, aliquot and store at -20°C or below. Avoid multiple freeze-thaw cycles.



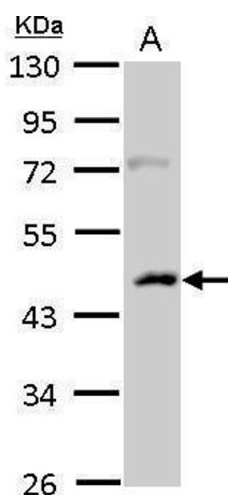
Immunohistochemistry

Image 1. IHC-P Image Immunohistochemical analysis of paraffin-embedded human colon carcinoma, using Casein Kinase 1 alpha 1L, antibody at 1:500 dilution.



Immunofluorescence

Image 2. ICC/IF Image Casein Kinase 1 alpha 1L antibody detects CSNK1A1L protein at cytoplasm by immunofluorescent analysis. Sample: HeLa cells were fixed in ice-cold MeOH for 5 min. Green: CSNK1A1L protein stained by Casein Kinase 1 alpha 1L antibody, diluted at 1:500. Blue: Hoechst 33342 staining.



Western Blotting

Image 3. WB Image Casein Kinase 1 alpha 1L antibody detects CSNK1A1L protein by Western blot analysis. A. 50 µg rat thymus lysate/extract 10 % SDS-PAGE Casein Kinase 1 alpha 1L antibody, dilution: 1:500

Please check the [product details page](#) for more images. Overall 4 images are available for ABIN2856129.