

Datasheet for ABIN2856131

anti-FLRT1 antibody

3 Images

[Go to Product page](#)

Overview

Quantity:	100 µL
Target:	FLRT1
Reactivity:	Human
Host:	Rabbit
Clonality:	Polyclonal
Conjugate:	This FLRT1 antibody is un-conjugated
Application:	Western Blotting (WB), Immunohistochemistry (Paraffin-embedded Sections) (IHC (p)), Immunocytochemistry (ICC), Immunofluorescence (IF)

Product Details

Immunogen:	Recombinant protein encompassing a sequence within the center region of human FLRT1. The exact sequence is proprietary.
Isotype:	IgG
Cross-Reactivity:	Human
Characteristics:	Rabbit Polyclonal antibody to FLRT1 (fibronectin leucine rich transmembrane protein 1) FLRT1 antibody [N1N3]
Purification:	Purified by antigen-affinity chromatography.

Target Details

Target:	FLRT1
Alternative Name:	fibronectin leucine rich transmembrane protein 1 (FLRT1 Products)

Target Details

Background: This gene encodes a member of the fibronectin leucine rich transmembrane protein (FLRT) family. The family members may function in cell adhesion and/or receptor signalling. Their protein structures resemble small leucine-rich proteoglycans found in the extracellular matrix. The encoded protein shares sequence similarity with two other family members, FLRT2 and FLRT3. This gene is expressed in kidney and brain.

Molecular Weight: 71 kDa

Gene ID: 23769

UniProt: [Q9NZU1](#)

Application Details

Application Notes: WB: 1:500-1:3000. ICC/IF: 1:100-1:1000. IHC-P: 1:100-1:1000. Optimal dilutions/concentrations should be determined by the researcher. Not tested in other applications.

Comment: Positive Control: H1299 , HeLaS3

Restrictions: For Research Use only

Handling

Format: Liquid

Concentration: 1 mg/mL

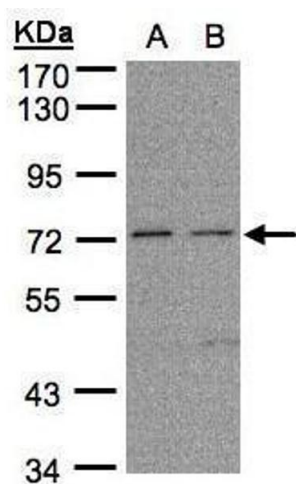
Buffer: 0.1M Tris-Glycine (pH 7), 10 % Glycerol, 0.01 % Thimerosal

Preservative: Thimerosal (Merthiolate)

Precaution of Use: This product contains Thimerosal (Merthiolate): a POISONOUS AND HAZARDOUS SUBSTANCE which should be handled by trained staff only.

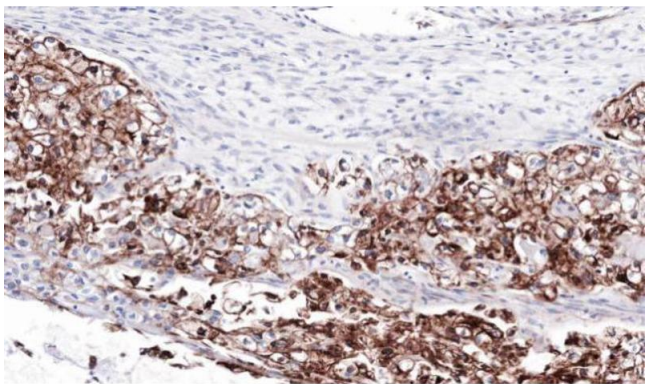
Storage: 4 °C,-20 °C

Storage Comment: Store as concentrated solution. Centrifuge briefly prior to opening vial. For short-term storage (1-2 weeks), store at 4°C. For long-term storage, aliquot and store at -20°C or below. Avoid multiple freeze-thaw cycles.



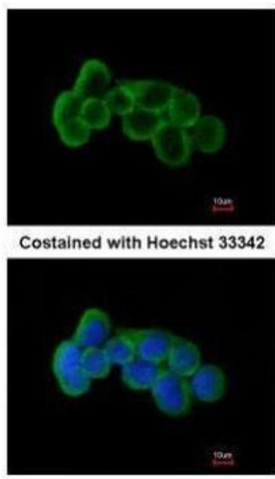
Western Blotting

Image 1. WB Image Sample (30µg whole cell lysate) A: H1299 B: HeLa S3, 7.5% SDS PAGE antibody diluted at 1:1000



Immunohistochemistry

Image 2. IHC-P Image Immunohistochemical analysis of paraffin-embedded human ovarian cancer, using FLRT1, antibody at 1:100 dilution.



Immunofluorescence

Image 3. ICC/IF Image Immunofluorescence analysis of methanol-fixed A431, using FLRT1, antibody at 1:200 dilution.