



Datasheet for ABIN2856133
anti-TPT1 antibody



[Go to Product page](#)

1 Image

Overview

Quantity:	100 µL
Target:	TPT1
Reactivity:	Human
Host:	Rabbit
Clonality:	Polyclonal
Conjugate:	This TPT1 antibody is un-conjugated
Application:	Western Blotting (WB)

Product Details

Immunogen:	Recombinant protein encompassing a sequence within the center region of human TCTP. The exact sequence is proprietary.
Isotype:	IgG
Cross-Reactivity:	Mouse
Characteristics:	Rabbit Polyclonal antibody to TCTP (tumor protein, translationally-controlled 1) TCTP antibody [N1C3]
Purification:	Purified by antigen-affinity chromatography.

Target Details

Target:	TPT1
Alternative Name:	tumor protein, translationally-controlled 1 (TPT1 Products)

Target Details

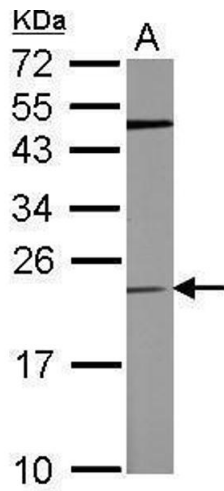
Background:	Involved in calcium binding and microtubule stabilization.
	Cellular Localization: Cytoplasm
Molecular Weight:	20 kDa
Gene ID:	7178
UniProt:	P13693
Pathways:	Response to Water Deprivation , Regulation of Cell Size , Negative Regulation of intrinsic apoptotic Signaling

Application Details

Application Notes:	WB: 1:500-1:3000. Optimal dilutions/concentrations should be determined by the researcher. Not tested in other applications.
Comment:	Positive Control: Mouse brain
Restrictions:	For Research Use only

Handling

Format:	Liquid
Concentration:	0.54 mg/mL
Buffer:	0.1M Tris-Glycine (pH 7), 10 % Glycerol, 0.01 % Thimerosal
Preservative:	Thimerosal (Merthiolate)
Precaution of Use:	This product contains Thimerosal (Merthiolate): a POISONOUS AND HAZARDOUS SUBSTANCE which should be handled by trained staff only.
Storage:	4 °C,-20 °C
Storage Comment:	Store as concentrated solution. Centrifuge briefly prior to opening vial. For short-term storage (1-2 weeks), store at 4°C. For long-term storage, aliquot and store at -20°C or below. Avoid multiple freeze-thaw cycles.



Western Blotting

Image 1. WB Image Sample (50 ug of whole cell lysate) A:
mouse brain 12% SDS PAGE antibody diluted at 1:500