



[Go to Product page](#)

Datasheet for ABIN2856134  
**anti-SGK3 antibody (N-Term)**

1 Image

Overview

Quantity:	100 µL
Target:	SGK3
Binding Specificity:	N-Term
Reactivity:	Human
Host:	Rabbit
Clonality:	Polyclonal
Conjugate:	This SGK3 antibody is un-conjugated
Application:	Western Blotting (WB)

Product Details

Immunogen:	Recombinant protein encompassing a sequence within the N-terminus region of human SGK3. The exact sequence is proprietary.
Isotype:	IgG
Cross-Reactivity:	Human
Characteristics:	Rabbit Polyclonal antibody to SGK3 (serum/glucocorticoid regulated kinase family, member 3) SGK3 antibody [N1N3]
Purification:	Purified by antigen-affinity chromatography.

Target Details

Target:	SGK3
---------	------

## Target Details

---

Alternative Name:	serum/glucocorticoid regulated kinase family member 3 ( <a href="#">SGK3 Products</a> )
Background:	<p>This gene is a member of the Ser/Thr protein kinase family and encodes a phosphoprotein with a PX (phox homology) domain. The protein phosphorylates several target proteins and has a role in neutral amino acid transport and activation of potassium and chloride channels.</p> <p>Alternate transcriptional splice variants, encoding different isoforms, have been characterized.</p> <p>Cellular Localization: Cytoplasmic vesicle (By similarity) , Early endosome (By similarity)</p>
Molecular Weight:	57 kDa
Gene ID:	23678
UniProt:	<a href="#">Q96BR1</a>

## Application Details

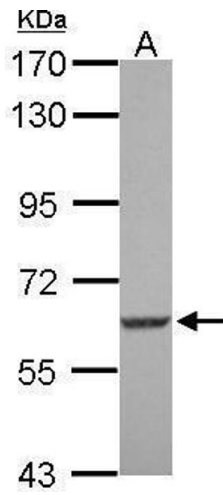
---

Application Notes:	WB: 1:500-1:3000. Optimal dilutions/concentrations should be determined by the researcher. Not tested in other applications.
Comment:	Positive Control: U87-MG
Restrictions:	For Research Use only

## Handling

---

Format:	Liquid
Concentration:	1 mg/mL
Buffer:	1XPBS ( pH 7), 1 % BSA, 20 % Glycerol, 0.01 % Thimerosal
Preservative:	Thimerosal (Merthiolate)
Precaution of Use:	This product contains Thimerosal (Merthiolate): a POISONOUS AND HAZARDOUS SUBSTANCE which should be handled by trained staff only.
Storage:	4 °C, -20 °C
Storage Comment:	Store as concentrated solution. Centrifuge briefly prior to opening vial. For short-term storage (1-2 weeks), store at 4°C. For long-term storage, aliquot and store at -20°C or below. Avoid multiple freeze-thaw cycles.



### Western Blotting

**Image 1.** WB Image Sample (30 ug of whole cell lysate) A:  
U87-MG 7.5% SDS PAGE antibody diluted at 1:1000