

Datasheet for ABIN2856136
anti-FKBP3 antibody (Center)[Go to Product page](#)

2 Images

Overview

Quantity:	100 µL
Target:	FKBP3
Binding Specificity:	Center
Reactivity:	Human, Mouse
Host:	Rabbit
Clonality:	Polyclonal
Conjugate:	This FKBP3 antibody is un-conjugated
Application:	Western Blotting (WB)

Product Details

Immunogen:	Recombinant protein encompassing a sequence within the center region of human FKBP25. The exact sequence is proprietary.
Isotype:	IgG
Cross-Reactivity:	Rat (Rattus), Cow (Bovine), Xenopus tropicalis
Cross-Reactivity (Details):	Rat (94 %), Bovine (97 %), Xenopus tropicalis (81 %)
Characteristics:	Rabbit Polyclonal antibody to FKBP25 (FK506 binding protein 3, 25 kDa) FKBP25 antibody [N1C3]
Purification:	Purified by antigen-affinity chromatography.

Target Details

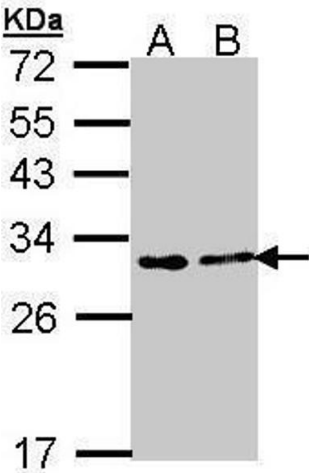
Target:	FKBP3
Alternative Name:	FKBP25 (FKBP3 Products)
Background:	<p>The protein encoded by this gene is a member of the immunophilin protein family, which play a role in immunoregulation and basic cellular processes involving protein folding and trafficking. This encoded protein is a cis-trans prolyl isomerase that binds the immunosuppressants FK506 and rapamycin, as well as histone deacetylases, the transcription factor YY1, casein kinase II, and nucleolin. It has a higher affinity for rapamycin than for FK506 and thus may be an important target molecule for immunosuppression by rapamycin.</p> <p>Cellular Localization: Nucleus</p>
Molecular Weight:	25 kDa
Gene ID:	2287

Application Details

Application Notes:	<p>Suggested dilution Reference Western blot 1:500-1:3000* Not tested in other applications.</p> <p>*Optimal dilutions/concentrations should be determined by the researcher.Suggested dilutionReferenceWestern blot1:500-1:3000*</p>
Comment:	Positive Control: 293T , A431 , H1299 , HeLa , HepG2 , Molt-4 , Raji , mouse brain
Restrictions:	For Research Use only

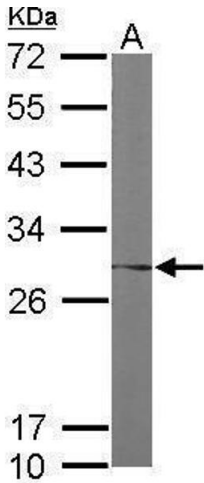
Handling

Format:	Liquid
Concentration:	0.53 mg/mL
Buffer:	0.1M Tris, 0.1M Glycine, 20 % Glycerol (pH 7). 0.01 % Thimerosal was added as a preservative.
Preservative:	Thimerosal (Merthiolate)
Precaution of Use:	This product contains Thimerosal (Merthiolate): a POISONOUS AND HAZARDOUS SUBSTANCE which should be handled by trained staff only.
Storage:	-20 °C
Storage Comment:	Keep as concentrated solution. Aliquot and store at -20°C or below. Avoid multiple freeze-thaw cycles.



Western Blotting

Image 1. WB Image Sample (30 ug of whole cell lysate) A: A431 , B: H1299 12% SDS PAGE antibody diluted at 1:1000



Western Blotting

Image 2. WB Image Sample (50 ug of whole cell lysate) A: Mouse brain 12% SDS PAGE antibody diluted at 1:1000