

Datasheet for ABIN2856144

**anti-RGL2 antibody****2** Images[Go to Product page](#)

## Overview

Quantity:	100 µL
Target:	RGL2
Reactivity:	Human
Host:	Rabbit
Clonality:	Polyclonal
Conjugate:	This RGL2 antibody is un-conjugated
Application:	Western Blotting (WB), Immunofluorescence (IF), Immunocytochemistry (ICC)

## Product Details

Immunogen:	Recombinant protein encompassing a sequence within the center region of human RGL2. The exact sequence is proprietary.
Isotype:	IgG
Cross-Reactivity:	Human
Characteristics:	Rabbit polyclonal antibody to RGL2 (ral guanine nucleotide dissociation stimulator-like 2) RGL2 antibody [N1N3]
Purification:	Purified by antigen-affinity chromatography.

## Target Details

Target:	RGL2
Alternative Name:	ral guanine nucleotide dissociation stimulator like 2 ( <a href="#">RGL2 Products</a> )

## Target Details

Background: Probable guanine nucleotide exchange factor. Putative effector of Ras and/or Rap. Associates with the GTP-bound form of Rap 1A and H-Ras in vitro.

Molecular Weight: 84 kDa

Gene ID: 5863

UniProt: [O15211](#)

## Application Details

Application Notes: WB: 1:500-1:3000. ICC/IF: 1:100-1:1000. Optimal dilutions/concentrations should be determined by the researcher. Not tested in other applications.

Comment: Positive Control: Raji

Restrictions: For Research Use only

## Handling

Format: Liquid

Concentration: 0.25 mg/mL

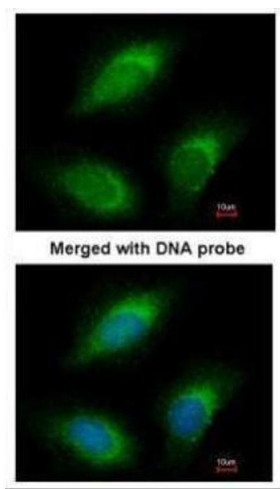
Buffer: 0.1M Tris-Glycine ( pH 7), 10 % Glycerol, 0.01 % Thimerosal

Preservative: Thimerosal (Merthiolate)

Precaution of Use: This product contains Thimerosal (Merthiolate): a POISONOUS AND HAZARDOUS SUBSTANCE which should be handled by trained staff only.

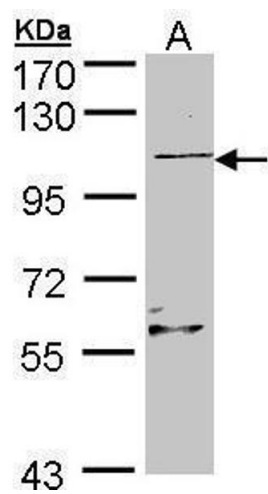
Storage: 4 °C,-20 °C

Storage Comment: Store as concentrated solution. Centrifuge briefly prior to opening vial. For short-term storage (1-2 weeks), store at 4°C. For long-term storage, aliquot and store at -20°C or below. Avoid multiple freeze-thaw cycles.



Immunofluorescence

**Image 1.** ICC/IF Image Immunofluorescence analysis of paraformaldehyde-fixed HeLa, using RGL2, antibody at 1:200 dilution.



Western Blotting

**Image 2.** WB Image Sample (30 ug of whole cell lysate) A: Raji , 7.5% SDS PAGE antibody diluted at 1:500