

Datasheet for ABIN2856145

anti-GLRa2 antibody**3** Images[Go to Product page](#)

Overview

Quantity:	100 µL
Target:	GLRa2
Reactivity:	Human
Host:	Rabbit
Clonality:	Polyclonal
Conjugate:	This GLRa2 antibody is un-conjugated
Application:	Western Blotting (WB), Immunohistochemistry (Paraffin-embedded Sections) (IHC (p)), Immunohistochemistry (Frozen Sections) (IHC (fro))

Product Details

Immunogen:	Recombinant protein encompassing a sequence within the center region of human Glycine Receptor alpha 2. The exact sequence is proprietary.
Isotype:	IgG
Cross-Reactivity:	Human, Mouse
Characteristics:	Rabbit Polyclonal antibody to Glycine Receptor alpha 2 (glycine receptor, alpha 2) Glycine Receptor alpha 2 antibody
Purification:	Purified by antigen-affinity chromatography.

Target Details

Target:	GLRa2
Alternative Name:	glycine receptor alpha 2 (GLRa2 Products)

Target Details

Background: The glycine receptor consists of two subunits, alpha and beta, and acts as a pentamer. The protein encoded by this gene is an alpha subunit and can bind strychnine. Several transcript variants encoding different isoforms have been found for this gene.

Cellular Localization: Cell junction , synapse , postsynaptic cell membrane, Multi-pass membrane protein , Cell membrane, Multi-pass membrane protein

Molecular Weight: 52 kDa

Gene ID: 2742

UniProt: [P23416](#)

Pathways: [Synaptic Membrane](#)

Application Details

Application Notes: WB: 1:1000-1:10000. IHC-P: 1:100-1:1000. Optimal dilutions/concentrations should be determined by the researcher. Not tested in other applications.

Restrictions: For Research Use only

Handling

Format: Liquid

Concentration: 1 mg/mL

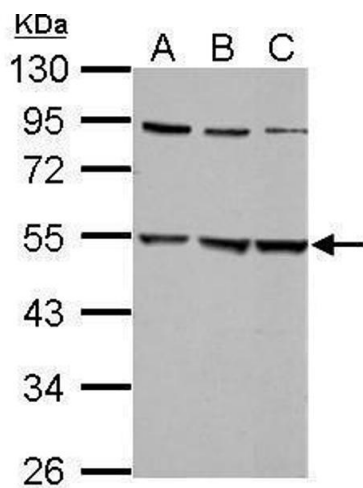
Buffer: 0.1M Tris-Glycine (pH 7), 10 % Glycerol, 0.01 % Thimerosal

Preservative: Thimerosal (Merthiolate)

Precaution of Use: This product contains Thimerosal (Merthiolate): a POISONOUS AND HAZARDOUS SUBSTANCE which should be handled by trained staff only.

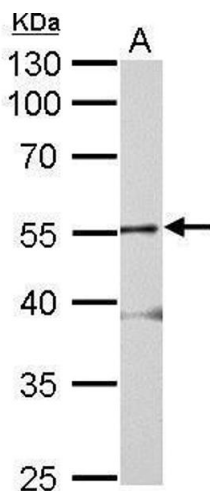
Storage: 4 °C,-20 °C

Storage Comment: Store as concentrated solution. Centrifuge briefly prior to opening vial. For short-term storage (1-2 weeks), store at 4°C. For long-term storage, aliquot and store at -20°C or below. Avoid multiple freeze-thaw cycles.



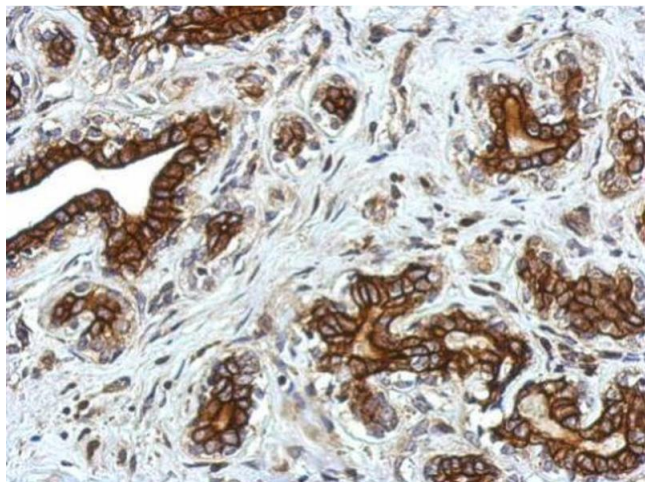
Western Blotting

Image 1. WB Image Sample (30 ug of whole cell lysate) A: 293T B: A431 C: HepG2 10% SDS PAGE antibody diluted at 1:5000



Western Blotting

Image 2. WB Image Glycine Receptor alpha 2 antibody detects GLRA2 protein by Western blot analysis. A. 50 µg mouse brain lysate/extract 10 % SDS-PAGE Glycine Receptor alpha 2 antibody , dilution: 1:2000



Immunohistochemistry

Image 3. IHC-P Image Immunohistochemical analysis of paraffin-embedded human breast cancer, using Glycine Receptor alpha 2, antibody at 1:750 dilution.