

Datasheet for ABIN2856148
anti-MSL3 antibody (Center)[Go to Product page](#)

4 Images

Overview

Quantity:	100 µL
Target:	MSL3
Binding Specificity:	Center
Reactivity:	Human, Mouse
Host:	Rabbit
Clonality:	Polyclonal
Conjugate:	This MSL3 antibody is un-conjugated
Application:	Western Blotting (WB), Immunofluorescence (IF), Immunoprecipitation (IP), Immunocytochemistry (ICC)

Product Details

Immunogen:	Recombinant protein encompassing a sequence within the center region of human MSL3L1. The exact sequence is proprietary.
Isotype:	IgG
Characteristics:	Rabbit Polyclonal antibody to MSL3L1 (male-specific lethal 3 homolog (Drosophila)) MSL3L1 antibody
Purification:	Purified by antigen-affinity chromatography.

Target Details

Target:	MSL3
Alternative Name:	MSL3L1 (MSL3 Products)

Target Details

Background: This gene encodes a nuclear protein and has similarity to drosophila male-specific lethal-3 gene. The drosophila protein plays a critical role in a dosage-compensation pathway, which equalizes X-linked gene expression in males and females. Thus this encoded protein is thought to play a similar function in chromatin remodeling and transcriptional regulation. This gene has been found to undergo X inactivation. There are four alternatively spliced transcript variants of this gene encoding different isoforms.

Cellular Localization: Nucleus

Molecular Weight: 60 kDa

Gene ID: 10943

Application Details

Application Notes: Suggested dilution Reference ICC/IF 1:100-1:1000* Immunoprecipitation 1:100-1:500* Western blot 1:500-1:3000* Not tested in other applications. *Optimal dilutions/concentrations should be determined by the researcher.Suggested dilutionReferenceICC/IF1:100-1:1000* Immunoprecipitation1:100-1:500* Western blot1:500-1:3000*

Comment: Positive Control: 293T , mouse muscle

Restrictions: For Research Use only

Handling

Format: Liquid

Concentration: 1 mg/mL

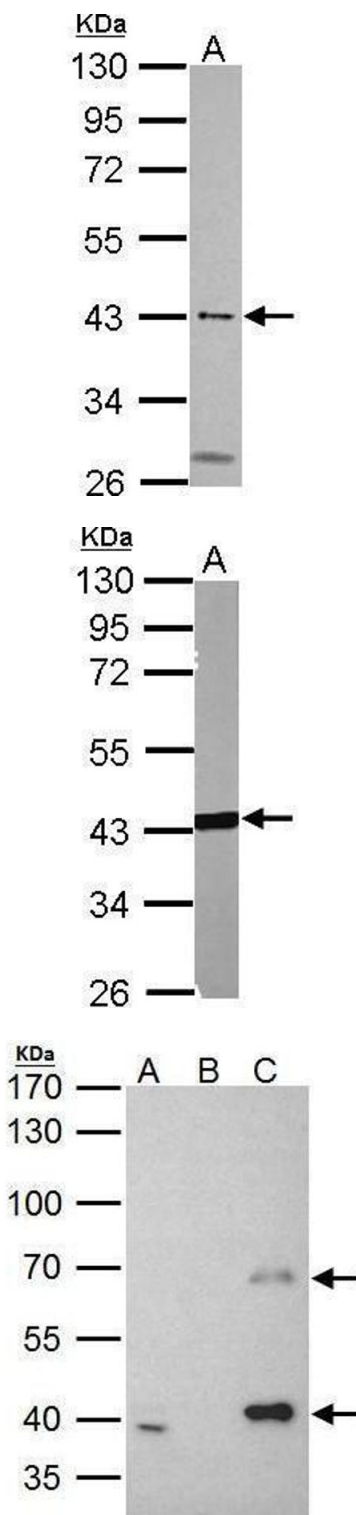
Buffer: 1XPBS, 1 % BSA, 20 % Glycerol (pH 7). 0.01 % Thimerosal was added as a preservative.

Preservative: Thimerosal (Merthiolate)

Precaution of Use: This product contains Thimerosal (Merthiolate): a POISONOUS AND HAZARDOUS SUBSTANCE which should be handled by trained staff only.

Storage: -20 °C

Storage Comment: Keep as concentrated solution. Aliquot and store at -20°C or below. Avoid multiple freeze-thaw cycles.



Western Blotting

Image 1. WB Image Sample (30 ug of whole cell lysate) A: 293T 10% SDS PAGE antibody diluted at 1:500

Western Blotting

Image 2. WB Image Sample (50 ug of whole cell lysate) A: mouse muscle 10% SDS PAGE antibody diluted at 1:1000

Immunoprecipitation

Image 3. IP Image MSL3L1 antibody immunoprecipitates MSL3L1 protein in IP experiments. IP Sample: 293T whole cell lysate/extract A. 40 μ g 293T whole cell lysate/extract B. Control with 2 μ g of preimmune rabbit IgG C. Immunoprecipitation of MSL3L1 protein by 2 μ g of MSL3L1 antibody, 7.5% SDS-PAGE The immunoprecipitated MSL3L1 protein was detected by MSL3L1 antibody, diluted at 1:1000. EasyBlot anti-rabbit IgG was used as a secondary reagent.

Please check the [product details page](#) for more images. Overall 4 images are available for ABIN2856148.