

Datasheet for ABIN2856149

**anti-GSTO1 antibody****3** Images[Go to Product page](#)

## Overview

Quantity:	100 µL
Target:	GSTO1
Reactivity:	Human
Host:	Rabbit
Clonality:	Polyclonal
Conjugate:	This GSTO1 antibody is un-conjugated
Application:	Western Blotting (WB), Immunohistochemistry (Paraffin-embedded Sections) (IHC (p))

## Product Details

Immunogen:	Recombinant protein encompassing a sequence within the center region of human GSTO1. The exact sequence is proprietary.
Isotype:	IgG
Cross-Reactivity:	Human, Mouse
Characteristics:	Rabbit Polyclonal antibody to GSTO1 (glutathione S-transferase omega 1) GSTO1 antibody [N1C3]
Purification:	Purified by antigen-affinity chromatography.
Grade:	KO Validated

## Target Details

Target:	GSTO1
---------	-------

## Target Details

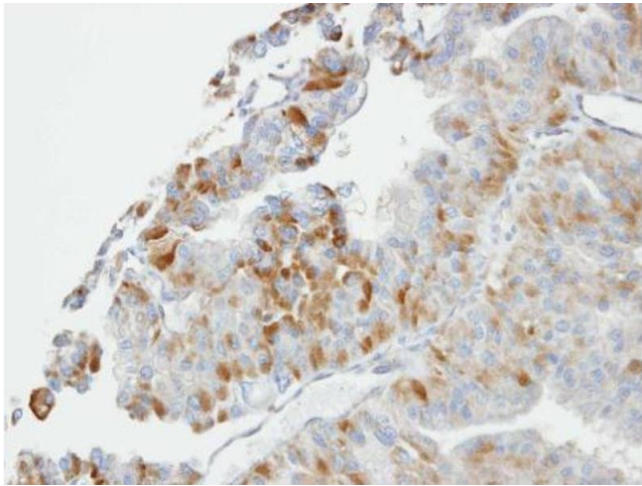
Alternative Name:	glutathione S-transferase omega 1 ( <a href="#">GSTO1 Products</a> )
Background:	<p>This gene encodes a member of the theta class glutathione S-transferase-like (GSTTL) protein family. In mouse, the encoded protein acts as a small stress response protein, likely involved in cellular redox homeostasis.</p> <p>Cellular Localization: Cytoplasm</p>
Molecular Weight:	28 kDa
Gene ID:	9446
UniProt:	<a href="#">P78417</a>
Pathways:	<a href="#">Myometrial Relaxation and Contraction</a> , <a href="#">Negative Regulation of Transporter Activity</a>

## Application Details

Application Notes:	WB: 1:500-1:3000. IHC-P: 1:100-1:1000. Optimal dilutions/concentrations should be determined by the researcher. Not tested in other applications.
Comment:	<p>Positive Control: HepG2 , mouse colon , 293T</p> <p>Validation: KO/KD</p>
Restrictions:	For Research Use only

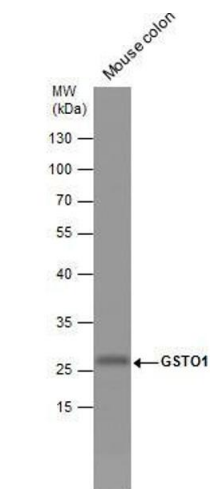
## Handling

Format:	Liquid
Concentration:	0.75 mg/mL
Buffer:	0.1M Tris-Glycine ( pH 7), 10 % Glycerol, 0.01 % Thimerosal
Preservative:	Thimerosal (Merthiolate)
Precaution of Use:	This product contains Thimerosal (Merthiolate): a POISONOUS AND HAZARDOUS SUBSTANCE which should be handled by trained staff only.
Storage:	4 °C,-20 °C
Storage Comment:	Store as concentrated solution. Centrifuge briefly prior to opening vial. For short-term storage (1-2 weeks), store at 4°C. For long-term storage, aliquot and store at -20°C or below. Avoid multiple freeze-thaw cycles.



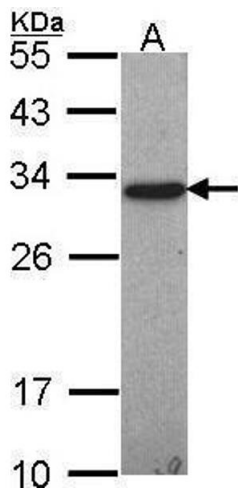
**Immunohistochemistry**

**Image 1.** IHC-P Image Immunohistochemical analysis of paraffin-embedded GSTA2 xenograft, using GSTO1, antibody at 1:100 dilution.



**Western Blotting**

**Image 2.** WB Image Mouse tissue extract (50 µg) was separated by 12% SDS-PAGE, and the membrane was blotted with GSTO1 antibody [N1C3], diluted at 1:1000.



**Western Blotting**

**Image 3.** WB Image Sample (30 ug of whole cell lysate) A: Hep G2 , 12% SDS PAGE antibody diluted at 1:1000