

Datasheet for ABIN2856150
anti-EEF1E1 antibody



[Go to Product page](#)

5 Images

Overview

Quantity:	100 µL
Target:	EEF1E1
Reactivity:	Human
Host:	Rabbit
Clonality:	Polyclonal
Conjugate:	This EEF1E1 antibody is un-conjugated
Application:	Western Blotting (WB), Immunofluorescence (IF), Immunohistochemistry (Paraffin-embedded Sections) (IHC (p)), Immunocytochemistry (ICC)

Product Details

Immunogen:	Recombinant protein encompassing a sequence within the center region of human EEF1E1. The exact sequence is proprietary.
Isotype:	IgG
Cross-Reactivity:	Human, Mouse
Characteristics:	Rabbit Polyclonal antibody to EEF1E1 (eukaryotic translation elongation factor 1 epsilon 1) EEF1E1 antibody [N1C3]
Purification:	Purified by antigen-affinity chromatography.
Grade:	KO Validated

Target Details

Target:	EEF1E1
---------	--------

Target Details

Alternative Name:	eukaryotic translation elongation factor 1 epsilon 1 (EEF1E1 Products)
Background:	<p>This gene encodes a multifunctional protein that localizes both in the cytoplasm and in the nucleus. In the cytoplasm, the encoded protein is an auxiliary component of the macromolecular aminoacyl-tRNA synthase complex. However, its mouse homolog has been shown to translocate to the nucleus in response to DNA damage and plays a positive role in ATM/ATR-mediated p53 activation. Alternative splicing results in multiple transcript variants.</p> <p>Cellular Localization: Cytoplasm , Nucleus</p>
Molecular Weight:	20 kDa
Gene ID:	9521
UniProt:	O43324
Pathways:	Positive Regulation of Response to DNA Damage Stimulus

Application Details

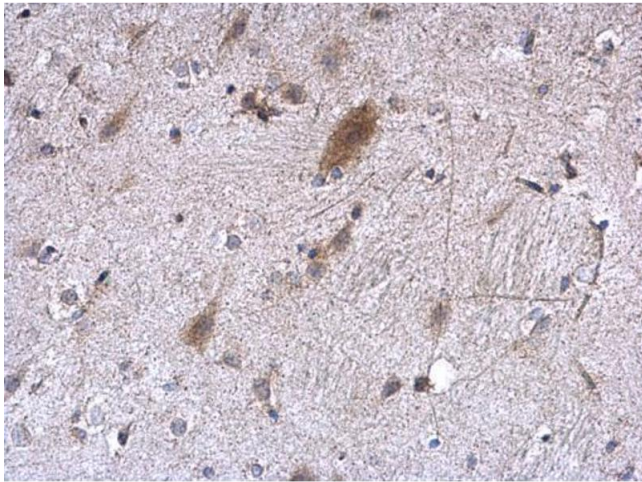
Application Notes:	WB: 1:500-1:3000. ICC/IF: 1:100-1:1000. IHC-P: 1:100-1:1000. Optimal dilutions/concentrations should be determined by the researcher. Not tested in other applications.
Comment:	Positive Control: Mouse brain , A431 , 293T Validation: KO/KD
Restrictions:	For Research Use only

Handling

Format:	Liquid
Concentration:	0.2 mg/mL
Buffer:	0.1M Tris-Glycine (pH 7), 10 % Glycerol, 0.01 % Thimerosal
Preservative:	Thimerosal (Merthiolate)
Precaution of Use:	This product contains Thimerosal (Merthiolate): a POISONOUS AND HAZARDOUS SUBSTANCE which should be handled by trained staff only.
Storage:	4 °C,-20 °C
Storage Comment:	Store as concentrated solution. Centrifuge briefly prior to opening vial. For short-term storage (1-2 weeks), store at 4°C. For long-term storage, aliquot and store at -20°C or below. Avoid

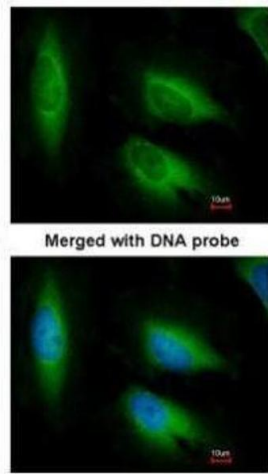
multiple freeze-thaw cycles.

Images



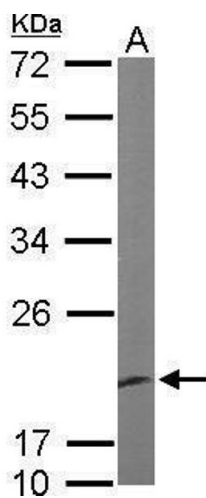
Immunohistochemistry

Image 1. IHC-P Image EEf1E1 antibody [N1C3] detects EEf1E1 protein at cytoplasm on mouse fore brain by immunohistochemical analysis. Sample: Paraffin-embedded mouse fore brain. EEf1E1 antibody [N1C3] , diluted at 1:500.



Immunofluorescence

Image 2. ICC/IF Image Immunofluorescence analysis of paraformaldehyde-fixed HeLa, using EEf1E1, antibody at 1:200 dilution.



Western Blotting

Image 3. WB Image Sample (50 ug of whole cell lysate) A: Mouse brain 12% SDS PAGE antibody diluted at 1:1000

Please check the [product details page](#) for more images. Overall 5 images are available for ABIN2856150.