

Datasheet for ABIN2856153
anti-KCNMB1 antibody (Center)

2 Images

[Go to Product page](#)

Overview

| | |
|----------------------|---------------------------------------|
| Quantity: | 100 µL |
| Target: | KCNMB1 |
| Binding Specificity: | Center |
| Reactivity: | Human, Mouse |
| Host: | Rabbit |
| Clonality: | Polyclonal |
| Conjugate: | This KCNMB1 antibody is un-conjugated |
| Application: | Western Blotting (WB) |

Product Details

| | |
|-----------------------------|--|
| Immunogen: | Recombinant protein encompassing a sequence within the center region of human KCNMB1. The exact sequence is proprietary. |
| Isotype: | IgG |
| Cross-Reactivity: | Dog (Canine), Rabbit, Cow (Bovine) |
| Cross-Reactivity (Details): | Dog (84 %), Rabbit (85 %), Bovine (84 %) |
| Characteristics: | Rabbit Polyclonal antibody to KCNMB1 (potassium large conductance calcium-activated channel, subfamily M, beta member 1) KCNMB1 antibody [N1C3] |
| Purification: | Purified by antigen-affinity chromatography. |

Target Details

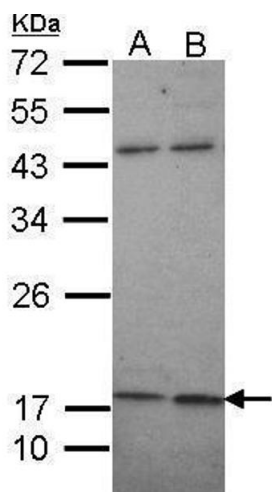
| | |
|-------------------|---|
| Target: | KCNMB1 |
| Alternative Name: | KCNMB1 (KCNMB1 Products) |
| Background: | <p>MaxiK channels are large conductance, voltage and calcium-sensitive potassium channels which are fundamental to the control of smooth muscle tone and neuronal excitability. MaxiK channels can be formed by 2 subunits: the pore-forming alpha subunit and the product of this gene, the modulatory beta subunit. Intracellular calcium regulates the physical association between the alpha and beta subunits.</p> <p>Cellular Localization: Membrane, Multi-pass membrane protein</p> |
| Molecular Weight: | 22 kDa |
| Gene ID: | 3779 |

Application Details

| | |
|--------------------|---|
| Application Notes: | <p>Suggested dilution Reference Western blot 1:1000-1:10000* Not tested in other applications.</p> <p>*Optimal dilutions/concentrations should be determined by the researcher.Suggested dilutionReferenceWestern blot1:1000-1:10000*</p> |
| Comment: | Positive Control: 293T , A431 , H1299 , HeLa , HepG2 , Molt-4 , Raji , mouse heart |
| Restrictions: | For Research Use only |

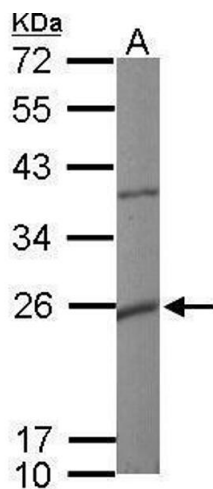
Handling

| | |
|--------------------|--|
| Format: | Liquid |
| Concentration: | 1 mg/mL |
| Buffer: | 1XPBS, 1 % BSA, 20 % Glycerol (pH 7). 0.01 % Thimerosal was added as a preservative. |
| Preservative: | Thimerosal (Merthiolate) |
| Precaution of Use: | This product contains Thimerosal (Merthiolate): a POISONOUS AND HAZARDOUS SUBSTANCE which should be handled by trained staff only. |
| Storage: | -20 °C |
| Storage Comment: | Keep as concentrated solution. Aliquot and store at -20°C or below. Avoid multiple freeze-thaw cycles. |



Western Blotting

Image 1. WB Image Sample (30 ug of whole cell lysate) A: A431 , B: H1299 12% SDS PAGE antibody diluted at 1:1000



Western Blotting

Image 2. WB Image Sample (50 ug of whole cell lysate) A: mouse heart 12% SDS PAGE antibody diluted at 1:10000