

Datasheet for ABIN2856154

anti-CTSO antibody

3 Images

[Go to Product page](#)

Overview

Quantity:	100 µL
Target:	CTSO
Reactivity:	Human
Host:	Rabbit
Clonality:	Polyclonal
Conjugate:	This CTSO antibody is un-conjugated
Application:	Western Blotting (WB), Immunohistochemistry (Paraffin-embedded Sections) (IHC (p)), Immunocytochemistry (ICC), Immunofluorescence (IF)

Product Details

Immunogen:	Recombinant protein encompassing a sequence within the center region of human Cathepsin O. The exact sequence is proprietary.
Isotype:	IgG
Cross-Reactivity:	Human
Characteristics:	Rabbit Polyclonal antibody to Cathepsin O (cathepsin O) Cathepsin O antibody [N1C3]
Purification:	Purified by antigen-affinity chromatography.

Target Details

Target:	CTSO
Alternative Name:	cathepsin O (CTSO Products)

Target Details

Background: The protein encoded by the gene is a cysteine proteinase and a member of the papain superfamily. This proteolytic enzyme is involved in cellular protein degradation and turnover. The recombinant form of this enzyme was shown to degrade synthetic peptides typically used as substrates for cysteine proteinases and its proteolytic activity was abolished by an inhibitor of cyteine proteinase.

Molecular Weight: 36 kDa

Gene ID: 1519

UniProt: [P43234](#)

Application Details

Application Notes: WB: 1:500-1:3000. ICC/IF: 1:100-1:1000. IHC-P: 1:100-1:1000. Optimal dilutions/concentrations should be determined by the researcher. Not tested in other applications.

Comment: Positive Control: HCT116

Restrictions: For Research Use only

Handling

Format: Liquid

Concentration: 1 mg/mL

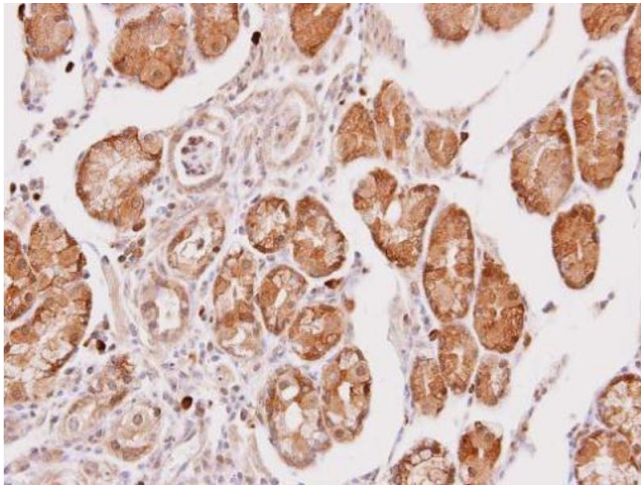
Buffer: 0.1M Tris-Glycine (pH 7), 10 % Glycerol, 0.01 % Thimerosal

Preservative: Thimerosal (Merthiolate)

Precaution of Use: This product contains Thimerosal (Merthiolate): a POISONOUS AND HAZARDOUS SUBSTANCE which should be handled by trained staff only.

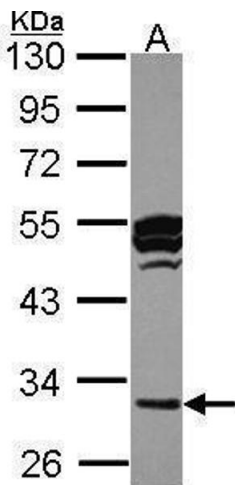
Storage: 4 °C,-20 °C

Storage Comment: Store as concentrated solution. Centrifuge briefly prior to opening vial. For short-term storage (1-2 weeks), store at 4°C. For long-term storage, aliquot and store at -20°C or below. Avoid multiple freeze-thaw cycles.



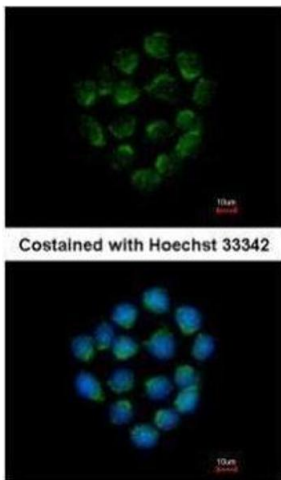
Immunohistochemistry

Image 1. IHC-P Image Immunohistochemical analysis of paraffin-embedded human gastric cancer, using Cathepsin O, antibody at 1:100 dilution.



Western Blotting

Image 2. WB Image Sample (30 ug of whole cell lysate) A: HCT116 10% SDS PAGE antibody diluted at 1:1000



Immunofluorescence

Image 3. ICC/IF Image Immunofluorescence analysis of methanol-fixed HCT116, using Cathepsin O, antibody at 1:500 dilution.