

Datasheet for ABIN2856155

anti-CNOT8 antibody**2** Images[Go to Product page](#)

Overview

Quantity:	100 µL
Target:	CNOT8
Reactivity:	Human
Host:	Rabbit
Clonality:	Polyclonal
Conjugate:	This CNOT8 antibody is un-conjugated
Application:	Western Blotting (WB), Immunofluorescence (IF), Immunocytochemistry (ICC)

Product Details

Immunogen:	Recombinant protein encompassing a sequence within the center region of human CNOT8. The exact sequence is proprietary.
Isotype:	IgG
Cross-Reactivity:	Human
Characteristics:	Rabbit Polyclonal antibody to CNOT8 (CCR4-NOT transcription complex, subunit 8) CNOT8 antibody
Purification:	Purified by antigen-affinity chromatography.

Target Details

Target:	CNOT8
Alternative Name:	CCR4-NOT transcription complex subunit 8 (CNOT8 Products)

Target Details

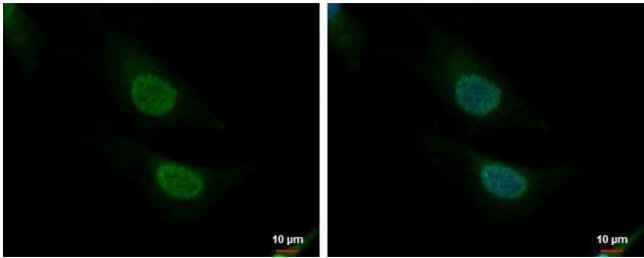
Background:	Cellular Localization: Cytoplasm , Nucleus
Molecular Weight:	34 kDa
Gene ID:	9337
UniProt:	Q9UFF9

Application Details

Application Notes:	WB: 1:500-1:3000. ICC/IF: 1:100-1:1000. Optimal dilutions/concentrations should be determined by the researcher. Not tested in other applications.
Comment:	Positive Control: SK-N-SH
Restrictions:	For Research Use only

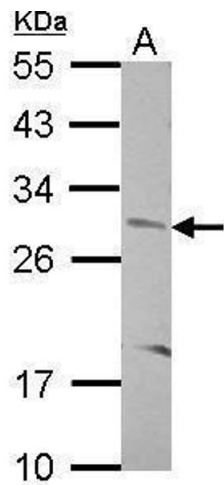
Handling

Format:	Liquid
Concentration:	0.62 mg/mL
Buffer:	1XPBS pH 7, 20 % Glycerol, 0.025 % ProClin 300
Preservative:	ProClin
Precaution of Use:	This product contains ProClin: a POISONOUS AND HAZARDOUS SUBSTANCE which should be handled by trained staff only.
Storage:	4 °C, -20 °C
Storage Comment:	Store as concentrated solution. Centrifuge briefly prior to opening vial. For short-term storage (1-2 weeks), store at 4°C. For long-term storage, aliquot and store at -20°C or below. Avoid multiple freeze-thaw cycles.



Immunofluorescence

Image 1. ICC/IF Image CNOT8 antibody detects CNOT8 protein at nucleus and cytoplasm by immunofluorescent analysis. Sample: HeLa cells were fixed in 4% paraformaldehyde at RT for 15 min. Green: CNOT8 protein stained by CNOT8 antibody , diluted at 1:200. Blue: Hoechst 33342 staining.



Western Blotting

Image 2. WB Image Sample (30 ug of whole cell lysate) A: SK-N-SH 12% SDS PAGE antibody diluted at 1:500