

Datasheet for ABIN2856156
anti-WNT7A antibody (Center)[Go to Product page](#)

3 Images

Overview

Quantity:	100 µL
Target:	WNT7A
Binding Specificity:	Center
Reactivity:	Human, Mouse
Host:	Rabbit
Clonality:	Polyclonal
Conjugate:	This WNT7A antibody is un-conjugated
Application:	Western Blotting (WB), Immunohistochemistry (Paraffin-embedded Sections) (IHC (p))

Product Details

Immunogen:	Recombinant protein encompassing a sequence within the center region of human WNT7A. The exact sequence is proprietary.
Isotype:	IgG
Cross-Reactivity:	Cow (Bovine), Rat (Rattus), Rhesus Monkey
Cross-Reactivity (Details):	Rat (100 %), Rhesus Monkey (100 %), Bovine (100 %)
Characteristics:	Rabbit Polyclonal antibody to WNT7A (protein Wnt-7a) WNT7A antibody
Purification:	Purified by antigen-affinity chromatography.

Target Details

Target:	WNT7A
Alternative Name:	WNT7A (WNT7A Products)
Background:	<p>This gene is a member of the WNT gene family, which consists of structurally related genes that encode secreted signaling proteins. These proteins have been implicated in oncogenesis and in several developmental processes, including regulation of cell fate and patterning during embryogenesis. This gene is involved in the development of the anterior-posterior axis in the female reproductive tract, and also plays a critical role in uterine smooth muscle patterning and maintenance of adult uterine function. Mutations in this gene are associated with Fuhrmann and Al-Awadi/Raas-Rothschild/Schinzal phocomelia syndromes.</p> <p>Cellular Localization: Secreted , extracellular space , extracellular matrix</p>
Molecular Weight:	39 kDa
Gene ID:	7476
Pathways:	WNT Signaling , Stem Cell Maintenance , Asymmetric Protein Localization

Application Details

Application Notes:	<p>Suggested dilution Reference IHC (Formalin-fixed paraffin-embedded sections) 1:100-1:1000* Western blot 1:1000-1:10000* Not tested in other applications. *Optimal dilutions/concentrations should be determined by the researcher.Suggested dilutionReferenceIHC (Formalin-fixed paraffin-embedded sections)1:100-1:1000* Western blot1:1000-1:10000*</p>
Comment:	Positive Control: WNT7A transfected 293T lysate
Restrictions:	For Research Use only

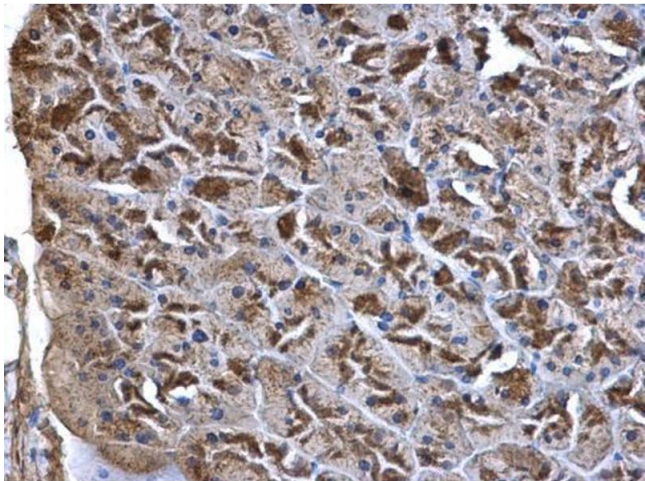
Handling

Format:	Liquid
Concentration:	1 mg/mL
Buffer:	1XPBS, 1 % BSA, 20 % Glycerol (pH 7). 0.01 % Thimerosal was added as a preservative.
Preservative:	Thimerosal (Merthiolate)
Precaution of Use:	This product contains Thimerosal (Merthiolate): a POISONOUS AND HAZARDOUS SUBSTANCE which should be handled by trained staff only.

Handling

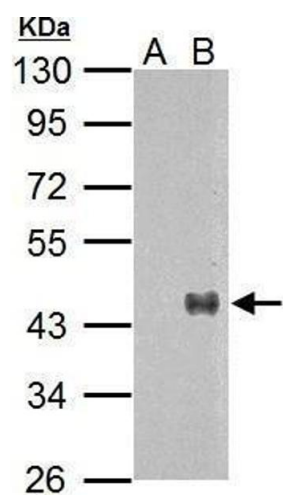
Storage:	-20 °C
Storage Comment:	Keep as concentrated solution. Aliquot and store at -20°C or below. Avoid multiple freeze-thaw cycles.

Images



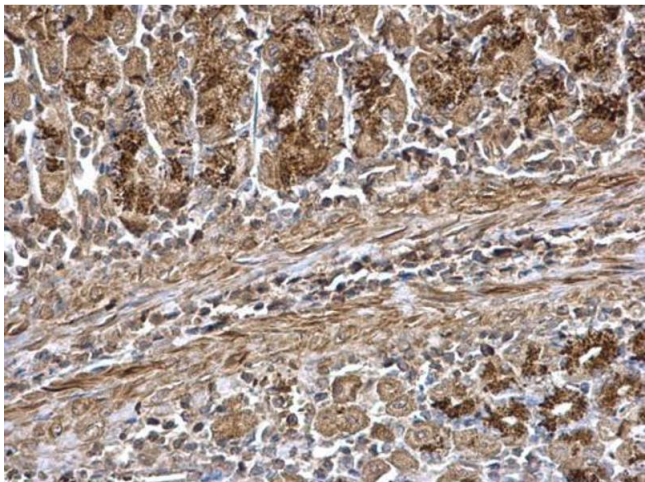
Immunohistochemistry

Image 1. IHC-P Image WNT7A antibody detects WNT7A protein at secreted on mouse pancreas by immunohistochemical analysis. Sample: Paraffin-embedded mouse pancreas. WNT7A antibody , dilution: 1:500.



Western Blotting

Image 2. WB Image Sample (30 ug of whole cell lysate) A: Non-transfected 293T lysates B: WNT7A transfected 293T lysate 10% SDS PAGE antibody diluted at 1:5000



Immunohistochemistry

Image 3. IHC-P Image WNT7A antibody detects WNT7A protein at secreted on mouse stomach by immunohistochemical analysis. Sample: Paraffin-embedded mouse stomach. WNT7A antibody , dilution: 1:500.