

Datasheet for ABIN2856158

anti-NCKAP1 antibody**3** Images[Go to Product page](#)

Overview

Quantity:	100 µL
Target:	NCKAP1
Reactivity:	Human
Host:	Rabbit
Clonality:	Polyclonal
Conjugate:	This NCKAP1 antibody is un-conjugated
Application:	Western Blotting (WB), Immunohistochemistry (Frozen Sections) (IHC (fro))

Product Details

Immunogen:	Recombinant protein encompassing a sequence within the center region of human NCKAP1. The exact sequence is proprietary.
Isotype:	IgG
Cross-Reactivity:	Human, Mouse, Rat
Characteristics:	Rabbit Polyclonal antibody to NCKAP1 (NCK-associated protein 1) NCKAP1 antibody [C1C2], Internal
Purification:	Purified by antigen-affinity chromatography.

Target Details

Target:	NCKAP1
Alternative Name:	NCK associated protein 1 (NCKAP1 Products)

Target Details

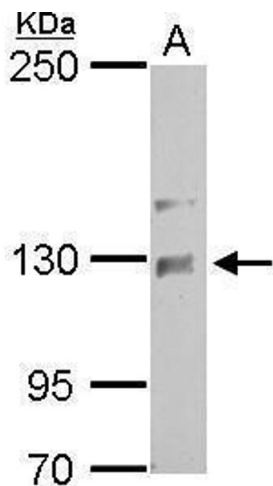
Background:	Is part of lamellipodial complex that controls Rac-dependent actin remodeling. Cellular Localization: Cell membrane, Single-pass membrane protein, Cytoplasmic side (By similarity) , Cell projection , lamellipodium membrane, Single-pass membrane protein, Cytoplasmic side (By similarity)
Molecular Weight:	129 kDa
Gene ID:	10787
UniProt:	Q9Y2A7
Pathways:	RTK Signaling , Tube Formation , Asymmetric Protein Localization , Embryonic Body Morphogenesis

Application Details

Application Notes:	WB: 1:500-1:10000. IHC-Fr: 1:100-1:1000. Optimal dilutions/concentrations should be determined by the researcher. Not tested in other applications.
Comment:	Positive Control: Mouse brain , rat brain , NCKAP1-transfected 293T
Restrictions:	For Research Use only

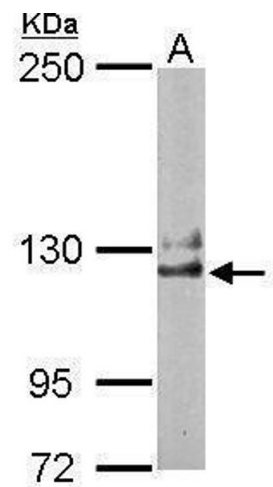
Handling

Format:	Liquid
Concentration:	0.5 mg/mL
Buffer:	0.1M Tris-Glycine (pH 7), 10 % Glycerol, 0.01 % Thimerosal
Preservative:	Thimerosal (Merthiolate)
Precaution of Use:	This product contains Thimerosal (Merthiolate): a POISONOUS AND HAZARDOUS SUBSTANCE which should be handled by trained staff only.
Storage:	4 °C, -20 °C
Storage Comment:	Store as concentrated solution. Centrifuge briefly prior to opening vial. For short-term storage (1-2 weeks), store at 4°C. For long-term storage, aliquot and store at -20°C or below. Avoid multiple freeze-thaw cycles.



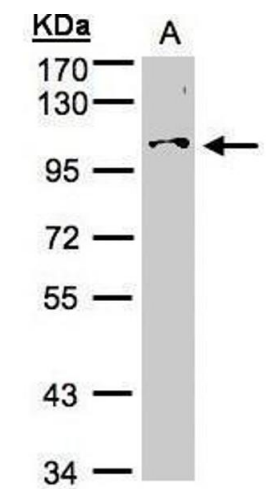
Western Blotting

Image 1. WB Image NCKAP1 antibody [C1C2], Internal detects NCKAP1 protein by Western blot analysis. A. 50 µg rat brain lysate/extract 5 % SDS-PAGE NCKAP1 antibody [C1C2], Internal , dilution: 1:1000



Western Blotting

Image 2. WB Image Sample (50 ug of whole cell lysate) A: Mouse brain 5% SDS PAGE antibody diluted at 1:1000



Western Blotting

Image 3. WB Image Sample (30µg whole cell lysate) A:Hep G2 , 7.5% SDS PAGE antibody diluted at 1:500