

Datasheet for ABIN2856159

anti-Glutathione Peroxidase 7 antibody**3** Images[Go to Product page](#)

Overview

| | |
|--------------|--|
| Quantity: | 100 µL |
| Target: | Glutathione Peroxidase 7 (GPX7) |
| Reactivity: | Human |
| Host: | Rabbit |
| Clonality: | Polyclonal |
| Conjugate: | This Glutathione Peroxidase 7 antibody is un-conjugated |
| Application: | Western Blotting (WB), Immunohistochemistry (Paraffin-embedded Sections) (IHC (p)) |

Product Details

| | |
|-------------------|--|
| Immunogen: | Recombinant protein encompassing a sequence within the center region of human GPX7. The exact sequence is proprietary. |
| Isotype: | IgG |
| Cross-Reactivity: | Human, Mouse |
| Characteristics: | Rabbit polyclonal antibody to Glutathione peroxidase 7 (glutathione peroxidase 7) GPX7 antibody [N1C3] |
| Purification: | Purified by antigen-affinity chromatography. |

Target Details

| | |
|-------------------|--|
| Target: | Glutathione Peroxidase 7 (GPX7) |
| Alternative Name: | glutathione peroxidase 7 (GPX7 Products) |

Target Details

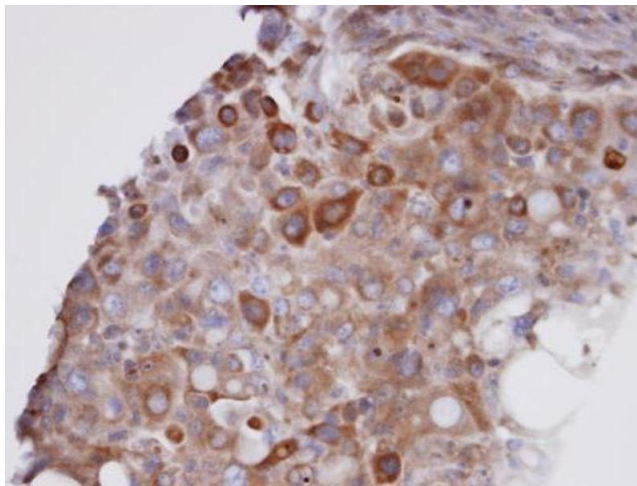
| | |
|-------------------|---|
| Background: | Cellular Localization: Secreted |
| Molecular Weight: | 21 kDa |
| Gene ID: | 2882 |
| UniProt: | Q96SL4 |
| Pathways: | Thyroid Hormone Synthesis |

Application Details

| | |
|--------------------|---|
| Application Notes: | WB: 1:500-1:3000. IHC-P: 1:100-1:1000. Optimal dilutions/concentrations should be determined by the researcher. Not tested in other applications. |
| Comment: | Positive Control: GPX7 transfected 293T |
| Restrictions: | For Research Use only |

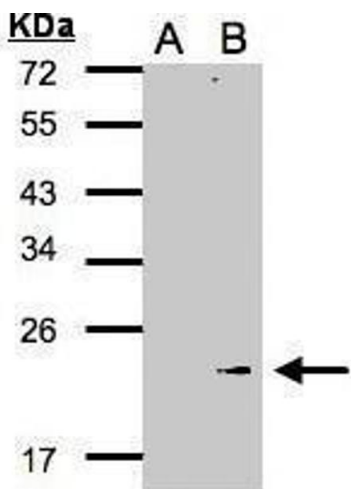
Handling

| | |
|--------------------|--|
| Format: | Liquid |
| Concentration: | 0.52 mg/mL |
| Buffer: | 0.1M Tris-Glycine (pH 7), 10 % Glycerol, 0.01 % Thimerosal |
| Preservative: | Thimerosal (Merthiolate) |
| Precaution of Use: | This product contains Thimerosal (Merthiolate): a POISONOUS AND HAZARDOUS SUBSTANCE which should be handled by trained staff only. |
| Storage: | 4 °C,-20 °C |
| Storage Comment: | Store as concentrated solution. Centrifuge briefly prior to opening vial. For short-term storage (1-2 weeks), store at 4°C. For long-term storage, aliquot and store at -20°C or below. Avoid multiple freeze-thaw cycles. |



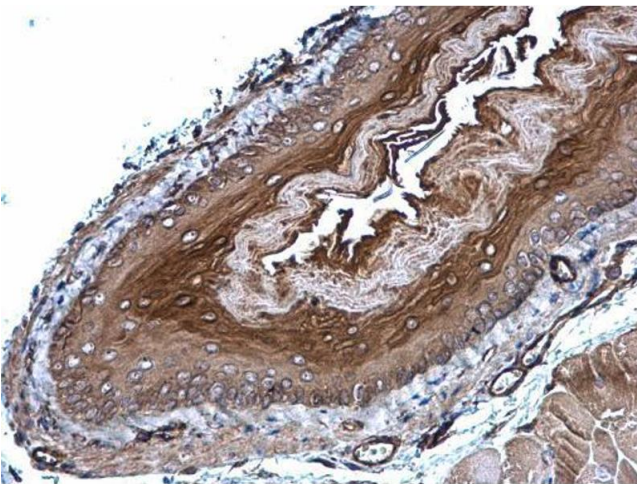
Immunohistochemistry

Image 1. IHC-P Image Immunohistochemical analysis of paraffin-embedded H441 xenograft, using GPX7 , antibody at 1:100 dilution.



Western Blotting

Image 2. WB Image Western Blot analysis of GPX7 expression in transfected 293T cell line by GPX7 polyclonal antibody. A: Non-transfected lysate. B: GPX7 transfected lysate. 12% SDS PAGE antibody diluted at 1:500



Immunohistochemistry

Image 3. IHC-P Image GPX7 antibody [N1C3] detects GPX7 protein at cytoplasm on mouse esophagus by immunohistochemical analysis. Sample: Paraffin-embedded mouse esophagus. GPX7 antibody [N1C3] , diluted at 1:500.