



[Go to Product page](#)

Datasheet for ABIN2856161
anti-ZNF281 antibody

2 Images

Overview

| | |
|--------------|---|
| Quantity: | 100 µL |
| Target: | ZNF281 |
| Reactivity: | Human |
| Host: | Rabbit |
| Clonality: | Polyclonal |
| Conjugate: | This ZNF281 antibody is un-conjugated |
| Application: | Western Blotting (WB), Immunofluorescence (IF), Immunocytochemistry (ICC) |

Product Details

| | |
|-------------------|---|
| Immunogen: | Recombinant protein encompassing a sequence within the center region of human ZNF281. The exact sequence is proprietary. |
| Isotype: | IgG |
| Cross-Reactivity: | Human |
| Characteristics: | Rabbit Polyclonal antibody to ZNF281 (zinc finger protein 281) ZNF281 antibody [N1N3] |
| Purification: | Purified by antigen-affinity chromatography. |

Target Details

| | |
|-------------------|---|
| Target: | ZNF281 |
| Alternative Name: | zinc finger protein 281 (ZNF281 Products) |

Target Details

| | |
|-------------------|--|
| Background: | Involved in transcriptional regulation. Represses the transcription of a number of genes including gastrin and ornithine decarboxylase. Binds to the G-rich box in the enhancer region of these genes. |
| Molecular Weight: | 97 kDa |
| Gene ID: | 23528 |
| UniProt: | Q9Y2X9 |
| Pathways: | Embryonic Body Morphogenesis |

Application Details

| | |
|--------------------|--|
| Application Notes: | WB: 1:500-1:3000. ICC/IF: 1:100-1:1000. Optimal dilutions/concentrations should be determined by the researcher. Not tested in other applications. |
| Comment: | ZNF281 transfected 293T |
| Restrictions: | For Research Use only |

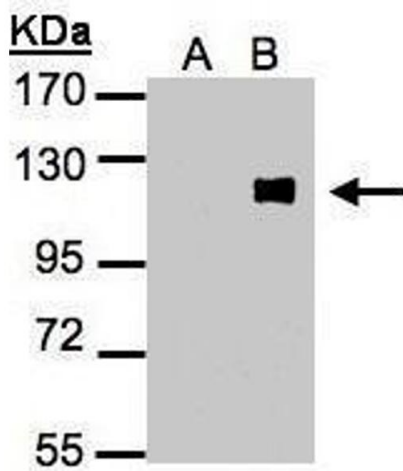
Handling

| | |
|--------------------|--|
| Format: | Liquid |
| Concentration: | 1 mg/mL |
| Buffer: | 0.1M Tris-Glycine (pH 7), 10 % Glycerol, 0.01 % Thimerosal |
| Preservative: | Thimerosal (Merthiolate) |
| Precaution of Use: | This product contains Thimerosal (Merthiolate): a POISONOUS AND HAZARDOUS SUBSTANCE which should be handled by trained staff only. |
| Storage: | 4 °C,-20 °C |
| Storage Comment: | Store as concentrated solution. Centrifuge briefly prior to opening vial. For short-term storage (1-2 weeks), store at 4°C. For long-term storage, aliquot and store at -20°C or below. Avoid multiple freeze-thaw cycles. |



Immunofluorescence

Image 1. ICC/IF Image Immunofluorescence analysis of paraformaldehyde-fixed Human ESC, using ZNF281, antibody at 1:100 dilution.



Western Blotting

Image 2. WB Image Western Blot analysis of ZNF281 expression in transfected 293T cell line by ZNF281 polyclonal antibody. A: Non-transfected lysate. B: ZNF281 transfected lysate. 7.5% SDS PAGE antibody diluted at 1:500