

Datasheet for ABIN2856164
anti-PFKL antibody (Center)[Go to Product page](#)

4 Images

Overview

Quantity:	100 µL
Target:	PFKL
Binding Specificity:	Center
Reactivity:	Human, Mouse
Host:	Rabbit
Clonality:	Polyclonal
Conjugate:	This PFKL antibody is un-conjugated
Application:	Western Blotting (WB), Immunofluorescence (IF), Immunohistochemistry (Paraffin-embedded Sections) (IHC (p)), Immunocytochemistry (ICC)

Product Details

Immunogen:	Recombinant protein encompassing a sequence within the center region of human PFKL. The exact sequence is proprietary.
Isotype:	IgG
Cross-Reactivity:	Cow (Bovine), Rat (Rattus)
Cross-Reactivity (Details):	Rat (95 %), Bovine (94 %)
Characteristics:	Rabbit Polyclonal antibody to PFKL (phosphofructokinase, liver) PFKL antibody [C1C3]
Purification:	Purified by antigen-affinity chromatography.

Target Details

Target:	PFKL
Alternative Name:	PFKL (PFKL Products)
Background:	Phosphofructokinase (PFK) is a tetrameric enzyme that catalyzes a key step in glycolysis, namely the conversion of D-fructose 6-phosphate to D-fructose 1,6-bisphosphate. Separate genes encode a muscle subunit (M) and a liver subunit (L). PFK from muscle is a homotetramer of M subunits, PFK from liver is a homotetramer of L-subunits, while PFK from platelets can be composed of any tetrameric combination of M and L subunits. The protein encoded by this gene represents the L subunit. Alternate splicing results in two transcript variants, one of which is a candidate for nonsense-mediated decay (NMD).
Molecular Weight:	85 kDa
Gene ID:	5211
Pathways:	Negative Regulation of Hormone Secretion , Warburg Effect

Application Details

Application Notes:	Suggested dilution Reference ICC/IF 1:100-1:1000* IHC (Formalin-fixed paraffin-embedded sections) 1:100-1:1000* Western blot 1:500-1:3000* Not tested in other applications. *Optimal dilutions/concentrations should be determined by the researcher.Suggested dilutionReferenceICC/IF1:100-1:1000* IHC (Formalin-fixed paraffin-embedded sections)1:100-1:1000* Western blot1:500-1:3000*
Comment:	Positive Control: A431 , H1299 , HeLa , HepG2
Restrictions:	For Research Use only

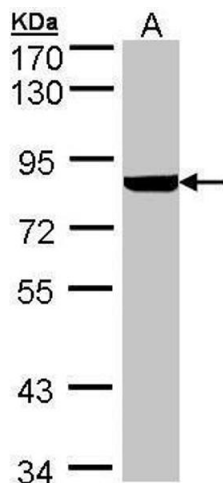
Handling

Format:	Liquid
Concentration:	0.8 mg/mL
Buffer:	0.1M Tris, 0.1M Glycine, 10 % Glycerol (pH 7). 0.01 % Thimerosal was added as a preservative.
Preservative:	Thimerosal (Merthiolate)
Precaution of Use:	This product contains Thimerosal (Merthiolate): a POISONOUS AND HAZARDOUS SUBSTANCE which should be handled by trained staff only.
Storage:	-20 °C

Handling

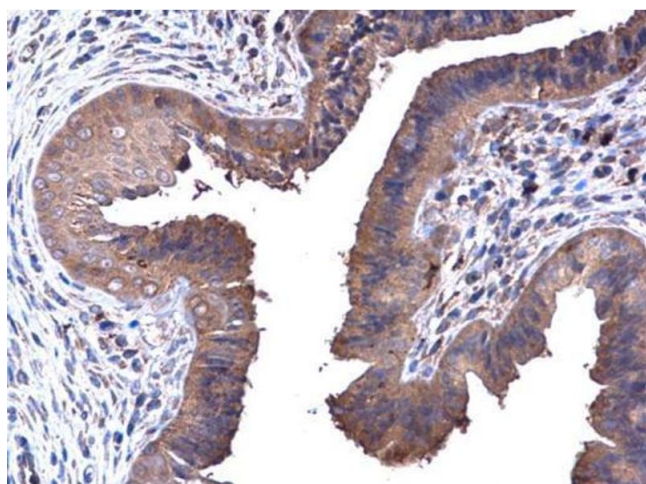
Storage Comment: Keep as concentrated solution. Aliquot and store at -20°C or below. Avoid multiple freeze-thaw cycles.

Images



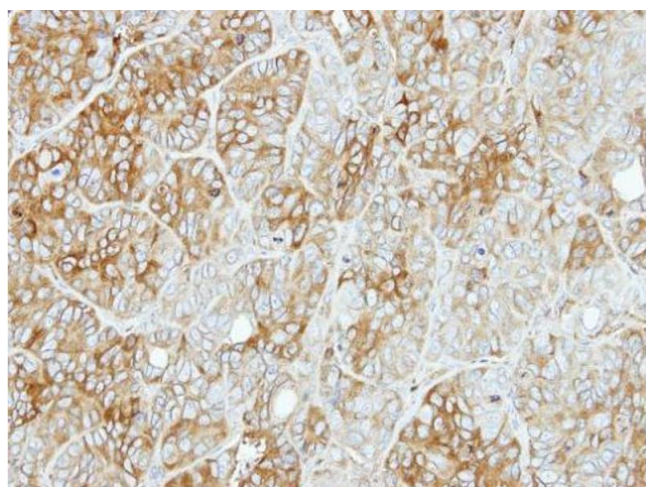
Western Blotting

Image 1. WB Image Sample (30 ug of whole cell lysate) A: Hep G2 , 7.5% SDS PAGE antibody diluted at 1:1000



Immunohistochemistry

Image 2. IHC-P Image PFKL antibody [C1C3] detects PFKL protein at cytoplasm in mouse cervix by immunohistochemical analysis. Sample: Paraffin-embedded mouse cervix. PFKL antibody [C1C3] , diluted at 1:500.



Immunohistochemistry

Image 3. IHC-P Image Immunohistochemical analysis of paraffin-embedded SW480 xenograft, using PFKL, antibody at 1:500 dilution.

Please check the [product details page](#) for more images. Overall 4 images are available for ABIN2856164.