

Datasheet for ABIN2856165

**anti-HAGH antibody**

## 4 Images

[Go to Product page](#)

## Overview

Quantity:	100 µL
Target:	HAGH
Reactivity:	Human
Host:	Rabbit
Clonality:	Polyclonal
Conjugate:	This HAGH antibody is un-conjugated
Application:	Western Blotting (WB), Immunohistochemistry (Paraffin-embedded Sections) (IHC (p))

## Product Details

Immunogen:	Recombinant protein encompassing a sequence within the center region of human HAGH. The exact sequence is proprietary.
Isotype:	IgG
Cross-Reactivity:	Human, Mouse
Characteristics:	Rabbit Polyclonal antibody to HAGH (hydroxyacylglutathione hydrolase) HAGH antibody [N2C3]
Purification:	Purified by antigen-affinity chromatography.

## Target Details

Target:	HAGH
Alternative Name:	hydroxyacylglutathione hydrolase ( <a href="#">HAGH Products</a> )

## Target Details

Background: The enzyme encoded by this gene is classified as a thiolesterase and is responsible for the hydrolysis of S-lactoyl-glutathione to reduced glutathione and D-lactate.

Molecular Weight: 34 kDa

Gene ID: 3029

UniProt: [Q16775](#)

## Application Details

Application Notes: WB: 1:500-1:3000. IHC-P: 1:100-1:1000. Optimal dilutions/concentrations should be determined by the researcher. Not tested in other applications.

Restrictions: For Research Use only

## Handling

Format: Liquid

Concentration: 0.34 mg/mL

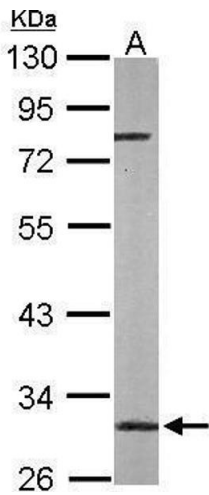
Buffer: 0.1M Tris-Glycine ( pH 7), 10 % Glycerol, 0.01 % Thimerosal

Preservative: Thimerosal (Merthiolate)

Precaution of Use: This product contains Thimerosal (Merthiolate): a POISONOUS AND HAZARDOUS SUBSTANCE which should be handled by trained staff only.

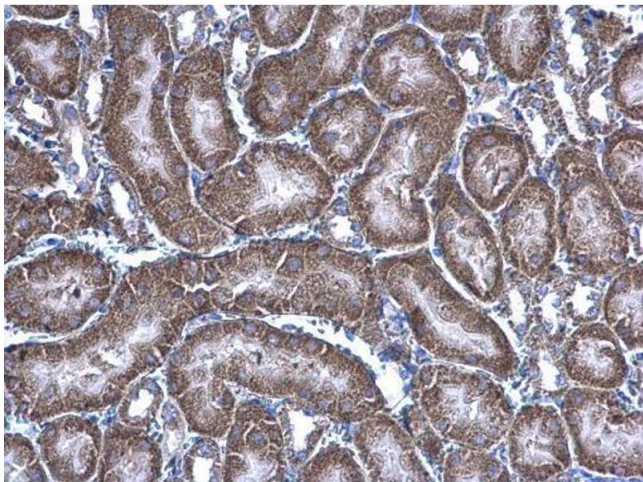
Storage: 4 °C,-20 °C

Storage Comment: Store as concentrated solution. Centrifuge briefly prior to opening vial. For short-term storage (1-2 weeks), store at 4°C. For long-term storage, aliquot and store at -20°C or below. Avoid multiple freeze-thaw cycles.



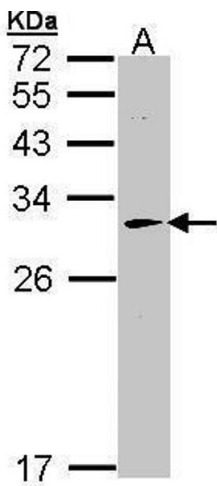
#### Western Blotting

**Image 1.** WB Image Sample (50 ug of whole cell lysate) A: mouse liver 10% SDS PAGE antibody diluted at 1:1000



#### Immunohistochemistry

**Image 2.** IHC-P Image HAGH antibody [N2C3] detects HAGH protein at mitochondria on mouse kidney by immunohistochemical analysis. Sample: Paraffin-embedded mouse kidney. HAGH antibody [N2C3] , diluted at 1:500.



#### Western Blotting

**Image 3.** WB Image Sample (30 ug of whole cell lysate) A: Hep G2 , 12% SDS PAGE antibody diluted at 1:1000

Please check the [product details page](#) for more images. Overall 4 images are available for ABIN2856165.