

Datasheet for ABIN2856169

anti-NT5C2 antibody**3** Images[Go to Product page](#)

Overview

Quantity:	100 µL
Target:	NT5C2
Reactivity:	Human
Host:	Rabbit
Clonality:	Polyclonal
Conjugate:	This NT5C2 antibody is un-conjugated
Application:	Western Blotting (WB), Immunohistochemistry (Paraffin-embedded Sections) (IHC (p))

Product Details

Immunogen:	Recombinant protein encompassing a sequence within the center region of human NT5C2. The exact sequence is proprietary.
Isotype:	IgG
Cross-Reactivity:	Human, Mouse
Characteristics:	Rabbit Polyclonal antibody to NT5C2 (5'-nucleotidase, cytosolic II) NT5C2 antibody [N2C1], Internal
Purification:	Purified by antigen-affinity chromatography.

Target Details

Target:	NT5C2
Alternative Name:	5'-nucleotidase, cytosolic II (NT5C2 Products)

Target Details

Background: Purine 5-prime-nucleotidase (EC 3.1.3.5) preferentially hydrolyzes inosine 5-prime-monophosphate (IMP) and other purine nucleotides, and is allosterically activated by various compounds, including ATP. The enzyme is exclusively located in the cytoplasmic matrix of cells and may have a critical role in the maintenance of a constant composition of intracellular purine/pyrimidine nucleotides in cooperation with other nucleotidases.[supplied by OMIM]

Cellular Localization: Cytoplasm

Molecular Weight: 65 kDa

Gene ID: 22978

UniProt: [P49902](#)

Application Details

Application Notes: WB: 1:500-1:3000. IHC-P: 1:100-1:1000. Optimal dilutions/concentrations should be determined by the researcher. Not tested in other applications.

Comment: Positive Control: Mouse liver , H1299 , HeLaS3

Restrictions: For Research Use only

Handling

Format: Liquid

Concentration: 1 mg/mL

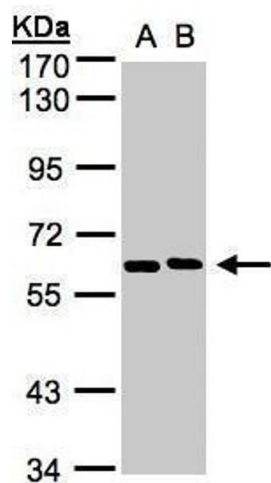
Buffer: 0.1M Tris-Glycine (pH 7), 10 % Glycerol, 0.01 % Thimerosal

Preservative: Thimerosal (Merthiolate)

Precaution of Use: This product contains Thimerosal (Merthiolate): a POISONOUS AND HAZARDOUS SUBSTANCE which should be handled by trained staff only.

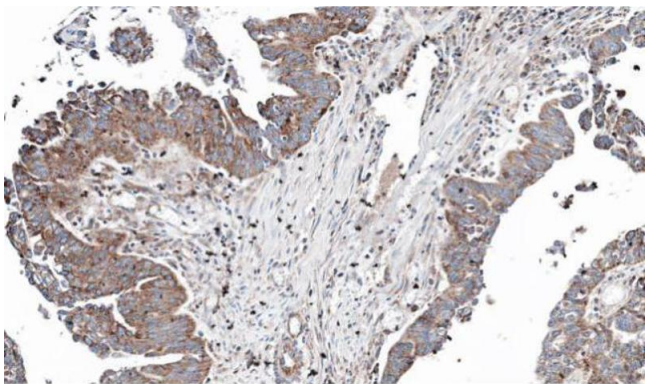
Storage: 4 °C, -20 °C

Storage Comment: Store as concentrated solution. Centrifuge briefly prior to opening vial. For short-term storage (1-2 weeks), store at 4°C. For long-term storage, aliquot and store at -20°C or below. Avoid multiple freeze-thaw cycles.



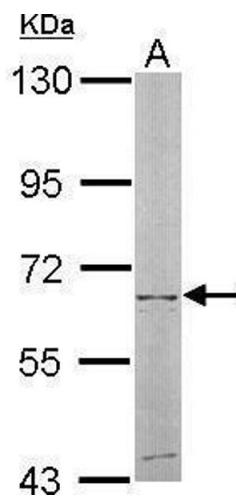
Western Blotting

Image 1. WB Image Sample(30 ug whole cell lysate)
A:H1299 B:HeLa S3, 7.5% SDS PAGE antibody diluted at 1:1000



Immunohistochemistry

Image 2. IHC-P Image Immunohistochemical analysis of paraffin-embedded human ovarian cancer, using NT5C2, antibody at 1:100 dilution.



Western Blotting

Image 3. WB Image Sample (50 ug of whole cell lysate) A:
mouse liver 7.5% SDS PAGE antibody diluted at 1:500