

Datasheet for ABIN2856170  
**anti-ARID3A antibody (Internal Region)**

## 5 Images

[Go to Product page](#)

## Overview

Quantity:	100 µL
Target:	ARID3A
Binding Specificity:	Internal Region
Reactivity:	Human, Mouse
Host:	Rabbit
Clonality:	Polyclonal
Conjugate:	This ARID3A antibody is un-conjugated
Application:	Western Blotting (WB), Immunofluorescence (IF), Immunoprecipitation (IP), Immunohistochemistry (Paraffin-embedded Sections) (IHC (p)), Immunocytochemistry (ICC)

## Product Details

Immunogen:	Recombinant protein encompassing a sequence within the center region of human DRIL1. The exact sequence is proprietary.
Isotype:	IgG
Characteristics:	Rabbit Polyclonal antibody to DRIL1 (AT rich interactive domain 3A (BRIGHT-like)) DRIL1 antibody [N2C2], Internal
Purification:	Purified by antigen-affinity chromatography.

## Target Details

Target:	ARID3A
Alternative Name:	DRIL1 ( <a href="#">ARID3A Products</a> )

## Target Details

**Background:** This gene encodes a member of the ARID (AT-rich interaction domain) family of DNA binding proteins. It was found by homology to the Drosophila dead ringer gene, which is important for normal embryogenesis. Other ARID family members have roles in embryonic patterning, cell lineage gene regulation, cell cycle control, transcriptional regulation, and possibly in chromatin structure modification.

Cellular Localization: Nucleus , Cytoplasm

**Molecular Weight:** 63 kDa

**Gene ID:** 1820

**Pathways:** [Chromatin Binding](#)

## Application Details

**Application Notes:** Suggested dilution Reference ICC/IF 1:100-1:1000\* IHC (Formalin-fixed paraffin-embedded sections) 1:100-1:1000\* Immunoprecipitation 1:100-1:500\* Western blot 1:500-1:3000\* Not tested in other applications. \*Optimal dilutions/concentrations should be determined by the researcher. Suggested dilution Reference ICC/IF 1:100-1:1000\* IHC (Formalin-fixed paraffin-embedded sections) 1:100-1:1000\* Immunoprecipitation 1:100-1:500\* Western blot 1:500-1:3000\*

**Comment:** Positive Control: HepG2 , BCL-1

**Restrictions:** For Research Use only

## Handling

**Format:** Liquid

**Concentration:** 1 mg/mL

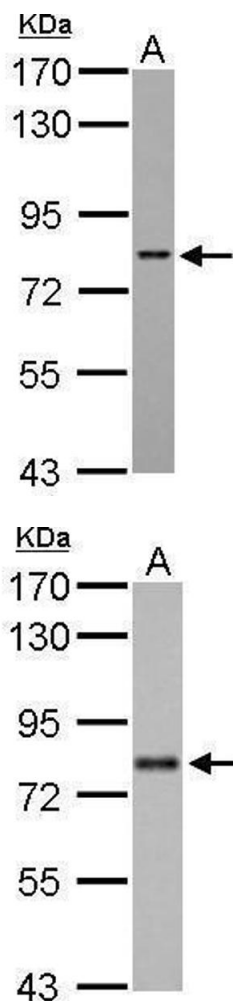
**Buffer:** 0.1M Tris, 0.1M Glycine, 10 % Glycerol ( pH 7). 0.01 % Thimerosal was added as a preservative.

**Preservative:** Thimerosal (Merthiolate)

**Precaution of Use:** This product contains Thimerosal (Merthiolate): a POISONOUS AND HAZARDOUS SUBSTANCE which should be handled by trained staff only.

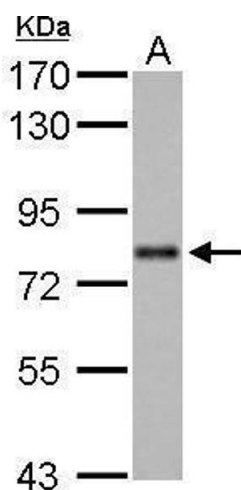
**Storage:** -20 °C

**Storage Comment:** Keep as concentrated solution. Aliquot and store at -20°C or below. Avoid multiple freeze-thaw cycles.



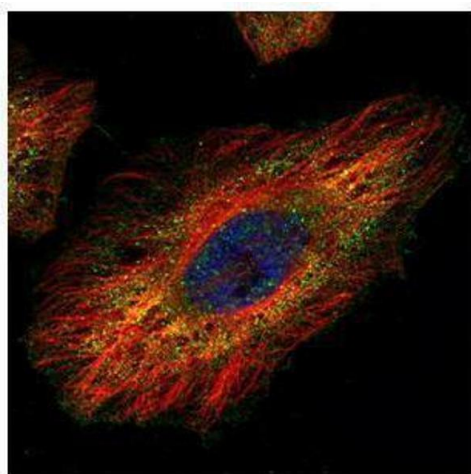
#### Western Blotting

**Image 1.** WB Image DRIL1 antibody [N2C2], Internal detects ARID3A protein by Western blot analysis. A. 30 µg BCL-1 whole cell lysate/extract 7.5 % SDS-PAGE DRIL1 antibody [N2C2], Internal , dilution: 1:1000



#### Western Blotting

**Image 2.** WB Image DRIL1 antibody [N2C2], Internal detects ARID3A protein by Western blot analysis. A. 30 µg HepG2 whole cell lysate/extract 7.5 % SDS-PAGE DRIL1 antibody [N2C2], Internal , dilution: 1:1000



#### Immunofluorescence

**Image 3.** ICC/IF Image Confocal immunofluorescence analysis (Olympus FV10i) of paraformaldehyde-fixed HeLa, using DRIL1, antibody (Green) at 1:500 dilution. Alpha-tubulin filaments were labeled with (Red) at 1:2000.

Please check the [product details page](#) for more images. Overall 5 images are available for ABIN2856170.