



Datasheet for ABIN2856172  
**anti-PPP2R4 antibody (Center)**



[Go to Product page](#)

2 Images

Overview

Quantity:	100 µL
Target:	PPP2R4
Binding Specificity:	Center
Reactivity:	Human, Mouse
Host:	Rabbit
Clonality:	Polyclonal
Conjugate:	This PPP2R4 antibody is un-conjugated
Application:	Western Blotting (WB)

Product Details

Immunogen:	Recombinant protein encompassing a sequence within the center region of human PPP2R4. The exact sequence is proprietary.
Isotype:	IgG
Cross-Reactivity:	Chicken, Rabbit, Rat (Rattus), Zebrafish (Danio rerio), Cow (Bovine)
Cross-Reactivity (Details):	Chicken (94 %), Rabbit (96 %), Rat (94 %), Zebrafish (83 %), Bovine (98 %)
Characteristics:	Rabbit Polyclonal antibody to PPP2R4 (protein phosphatase 2A activator, regulatory subunit 4) PPP2R4 antibody [N2C3]
Purification:	Affinity purified by Protein A.

## Target Details

---

Target:	PPP2R4
Alternative Name:	PPP2R4 ( <a href="#">PPP2R4 Products</a> )
Background:	<p>Protein phosphatase 2A is one of the four major Ser/Thr phosphatases and is implicated in the negative control of cell growth and division. Protein phosphatase 2A holoenzymes are heterotrimeric proteins composed of a structural subunit A, a catalytic subunit C, and a regulatory subunit B. The regulatory subunit is encoded by a diverse set of genes that have been grouped into the B/PR55, B'/PR61, and B''/PR72 families. These different regulatory subunits confer distinct enzymatic specificities and intracellular localizations to the holoenzyme. The product of this gene belongs to the B' family. This gene encodes a specific phosphotyrosyl phosphatase activator of the dimeric form of protein phosphatase 2A. Alternative splicing results in multiple transcript variants encoding different isoforms.</p>
Molecular Weight:	41 kDa
Gene ID:	5524
Pathways:	<a href="#">PI3K-Akt Signaling</a> , <a href="#">M Phase</a> , <a href="#">Hepatitis C</a> , <a href="#">Toll-Like Receptors Cascades</a>

## Application Details

---

Application Notes:	<p>Suggested dilution Reference Western blot 1:500-1:3000* Not tested in other applications. *Optimal dilutions/concentrations should be determined by the researcher.Suggested dilutionReferenceWestern blot1:500-1:3000*</p>
Comment:	Positive Control: 293T , A431 , mouse brain
Restrictions:	For Research Use only

## Handling

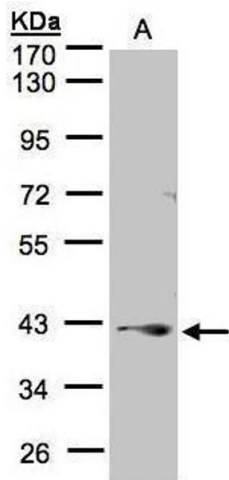
---

Format:	Liquid
Concentration:	6.31 mg/mL
Buffer:	0.1M Tris, 0.1M Glycine, 10 % Glycerol ( pH 7). 0.01 % Thimerosal was added as a preservative.
Preservative:	Thimerosal (Merthiolate)
Precaution of Use:	This product contains Thimerosal (Merthiolate): a POISONOUS AND HAZARDOUS SUBSTANCE which should be handled by trained staff only.
Storage:	-20 °C

## Handling

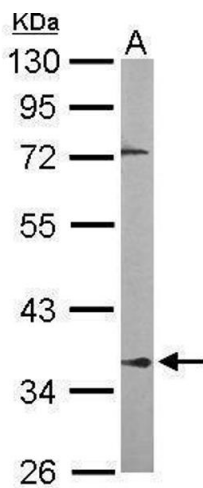
Storage Comment: Keep as concentrated solution. Aliquot and store at -20°C or below. Avoid multiple freeze-thaw cycles.

## Images



### Western Blotting

**Image 1.** WB Image Sample(30 µg of whole cell lysate)  
A:A431, 10% SDS PAGE antibody diluted at 1:1000



### Western Blotting

**Image 2.** WB Image Sample (50 ug of whole cell lysate) A:  
Mouse brain 10% SDS PAGE antibody diluted at 1:1000