

Datasheet for ABIN2856173

anti-CCT8 antibody

3 Images

[Go to Product page](#)

Overview

Quantity:	100 µL
Target:	CCT8
Reactivity:	Human
Host:	Rabbit
Clonality:	Polyclonal
Conjugate:	This CCT8 antibody is un-conjugated
Application:	Western Blotting (WB), Immunohistochemistry (Paraffin-embedded Sections) (IHC (p))

Product Details

Immunogen:	Recombinant protein encompassing a sequence within the center region of human TCP1 theta. The exact sequence is proprietary.
Isotype:	IgG
Cross-Reactivity:	Human, Mouse
Characteristics:	Rabbit Polyclonal antibody to TCP1 theta (chaperonin containing TCP1, subunit 8 (theta)) TCP1 theta antibody [N2C2], Internal
Purification:	Purified by antigen-affinity chromatography.

Target Details

Target:	CCT8
Alternative Name:	chaperonin containing TCP1 subunit 8 (CCT8 Products)

Target Details

Background: Molecular chaperone, assists the folding of proteins upon ATP hydrolysis. As part of the BBS/CCT complex may play a role in the assembly of BBSome, a complex involved in ciliogenesis regulating transports vesicles to the cilia. Known to play a role, in vitro, in the folding of actin and tubulin.

Cellular Localization: Cytoplasm

Molecular Weight: 60 kDa

Gene ID: 10694

UniProt: [P50990](#)

Application Details

Application Notes: WB: 1:1000-1:10000. IHC-P: 1:100-1:1000. Optimal dilutions/concentrations should be determined by the researcher. Not tested in other applications.

Comment: Positive Control: Mouse brain

Restrictions: For Research Use only

Handling

Format: Liquid

Concentration: 1 mg/mL

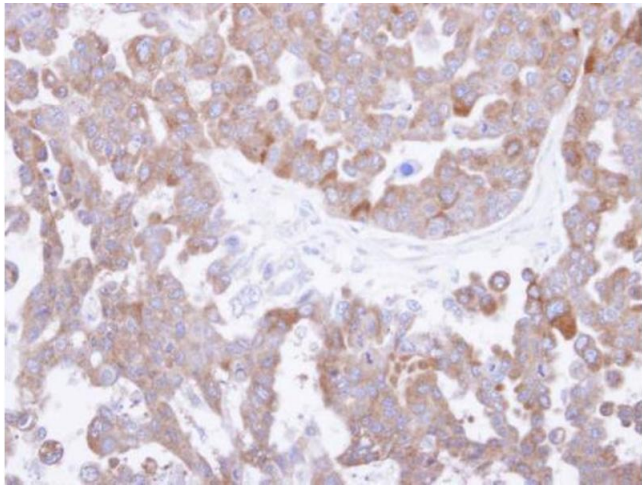
Buffer: 1XPBS (pH 7), 1 % BSA, 20 % Glycerol, 0.01 % Thimerosal

Preservative: Thimerosal (Merthiolate)

Precaution of Use: This product contains Thimerosal (Merthiolate): a POISONOUS AND HAZARDOUS SUBSTANCE which should be handled by trained staff only.

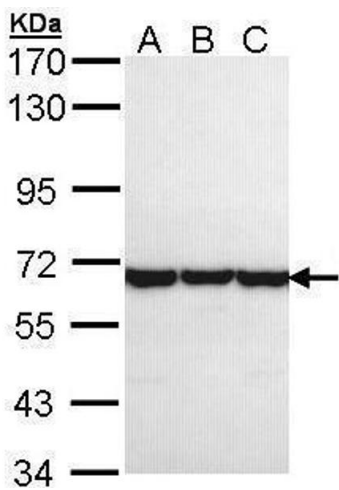
Storage: 4 °C,-20 °C

Storage Comment: Store as concentrated solution. Centrifuge briefly prior to opening vial. For short-term storage (1-2 weeks), store at 4°C. For long-term storage, aliquot and store at -20°C or below. Avoid multiple freeze-thaw cycles.



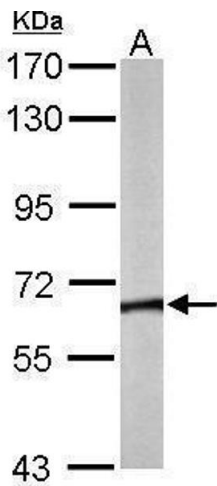
Immunohistochemistry

Image 1. IHC-P Image Immunohistochemical analysis of paraffin-embedded OVCAR3 xenograft, using TCP-1 theta , antibody at 1:500 dilution.



Western Blotting

Image 2. WB Image Sample (30 ug of whole cell lysate) A: A431 , B: H1299 C: Hela 7.5% SDS PAGE antibody diluted at 1:1000



Western Blotting

Image 3. WB Image Sample (50 ug of whole cell lysate) A: Mouse brain 7.5% SDS PAGE antibody diluted at 1:5000