

Datasheet for ABIN2856179

**anti-KRR1 antibody****3** Images[Go to Product page](#)

## Overview

Quantity:	100 µL
Target:	KRR1
Reactivity:	Human
Host:	Rabbit
Clonality:	Polyclonal
Conjugate:	This KRR1 antibody is un-conjugated
Application:	Western Blotting (WB), Immunofluorescence (IF), Immunocytochemistry (ICC), Immunohistochemistry (Paraffin-embedded Sections) (IHC (p))

## Product Details

Immunogen:	Recombinant protein encompassing a sequence within the center region of human KRR1. The exact sequence is proprietary.
Isotype:	IgG
Cross-Reactivity:	Human
Characteristics:	Rabbit polyclonal antibody to KRR1 (KRR1, small subunit (SSU) processome component, homolog (yeast)) KRR1 antibody [N1C3]
Purification:	Purified by antigen-affinity chromatography.

## Target Details

Target:	KRR1
---------	------

## Target Details

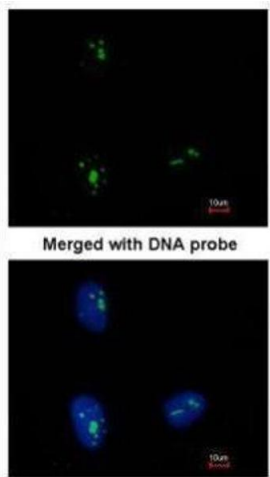
Alternative Name:	KRR1 small subunit processome component homolog ( <a href="#">KRR1 Products</a> )
Background:	Required for 40S ribosome biogenesis. Involved in nucleolar processing of pre-18S ribosomal RNA and ribosome assembly.  Cellular Localization: Nucleus , nucleolus
Molecular Weight:	44 kDa
Gene ID:	11103
UniProt:	<a href="#">Q13601</a>

## Application Details

Application Notes:	WB: 1:500-1:3000. ICC/IF: 1:100-1:1000. IHC-P: 1:100-1:1000. Optimal dilutions/concentrations should be determined by the researcher. Not tested in other applications.
Comment:	Positive Control: H1299 , HeLa
Restrictions:	For Research Use only

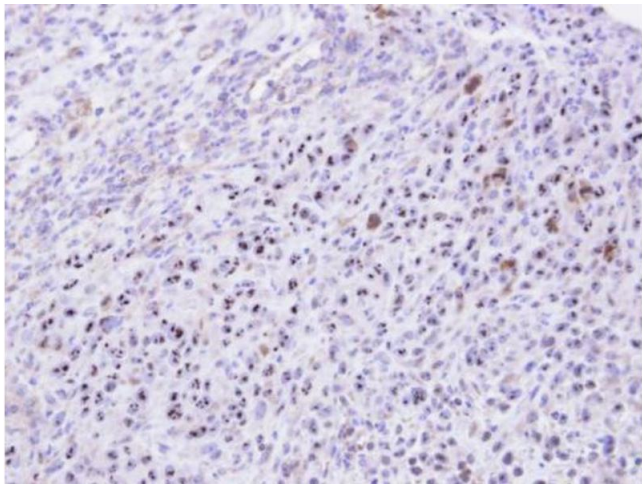
## Handling

Format:	Liquid
Concentration:	1 mg/mL
Buffer:	0.1M Tris-Glycine ( pH 7), 10 % Glycerol, 0.01 % Thimerosal
Preservative:	Thimerosal (Merthiolate)
Precaution of Use:	This product contains Thimerosal (Merthiolate): a POISONOUS AND HAZARDOUS SUBSTANCE which should be handled by trained staff only.
Storage:	4 °C,-20 °C
Storage Comment:	Store as concentrated solution. Centrifuge briefly prior to opening vial. For short-term storage (1-2 weeks), store at 4°C. For long-term storage, aliquot and store at -20°C or below. Avoid multiple freeze-thaw cycles.



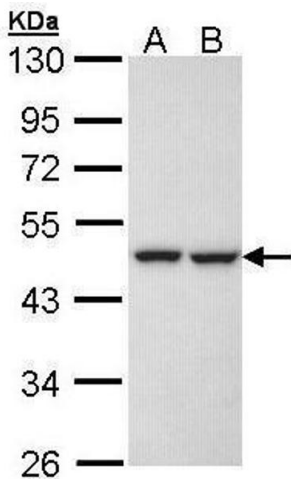
### Immunofluorescence

**Image 1.** ICC/IF Image Immunofluorescence analysis of paraformaldehyde-fixed HeLa, using KRR1, antibody at 1:500 dilution.



### Immunohistochemistry

**Image 2.** IHC-P Image Immunohistochemical analysis of paraffin-embedded SAS xenograft, using KRR1, antibody at 1:500 dilution.



### Western Blotting

**Image 3.** WB Image Sample (30 ug of whole cell lysate) A: H1299 B: Hela 10% SDS PAGE antibody diluted at 1:1000