



Datasheet for ABIN2856183  
**anti-IFNAR2 antibody (Center)**



[Go to Product page](#)

2 Images

1 Publication

### Overview

Quantity:	100 µL
Target:	IFNAR2
Binding Specificity:	Center
Reactivity:	Human
Host:	Rabbit
Clonality:	Polyclonal
Conjugate:	This IFNAR2 antibody is un-conjugated
Application:	Western Blotting (WB), Immunofluorescence (IF), Immunocytochemistry (ICC)

### Product Details

Immunogen:	Recombinant protein encompassing a sequence within the center region of human IFNAR2. The exact sequence is proprietary.
Isotype:	IgG
Characteristics:	Rabbit Polyclonal antibody to IFNAR2 (interferon (alpha, beta and omega) receptor 2) IFNAR2 antibody
Purification:	Purified by antigen-affinity chromatography.

### Target Details

Target:	IFNAR2
Alternative Name:	IFNAR2 ( <a href="#">IFNAR2 Products</a> )

## Target Details

---

**Background:** The protein encoded by this gene is a type I membrane protein that forms one of the two chains of a receptor for interferons alpha and beta. Binding and activation of the receptor stimulates Janus protein kinases, which in turn phosphorylate several proteins, including STAT1 and STAT2. Multiple transcript variants encoding at least two different isoforms have been found for this gene.

Cellular Localization: Membrane, Single-pass type I membrane protein

**Molecular Weight:** 58 kDa

**Gene ID:** 3455

**Pathways:** [JAK-STAT Signaling](#), [Hepatitis C](#)

## Application Details

---

**Application Notes:** Suggested dilution Reference ICC/IF 1:100-1:1000\* Western blot 1:500-1:3000\* Not tested in other applications. \*Optimal dilutions/concentrations should be determined by the researcher.Suggested dilutionReferenceICC/IF1:100-1:1000\* Western blot1:500-1:3000\*

**Comment:** Positive Control: 293T , A431 , H1299 , HeLa , HepG2 , Molt-4 , Raji

**Restrictions:** For Research Use only

## Handling

---

**Format:** Liquid

**Concentration:** 1 mg/mL

**Buffer:** 0.1M Tris, 0.1M Glycine, 10 % Glycerol ( pH 7). 0.01 % Thimerosal was added as a preservative.

**Preservative:** Thimerosal (Merthiolate)

**Precaution of Use:** This product contains Thimerosal (Merthiolate): a POISONOUS AND HAZARDOUS SUBSTANCE which should be handled by trained staff only.

**Storage:** -20 °C

**Storage Comment:** Keep as concentrated solution. Aliquot and store at -20°C or below. Avoid multiple freeze-thaw cycles.

## Publications

---

**Product cited in:** Shirozu, Iwano, Ogiso, Suzuki, Balboula, Bai, Kawahara, Kimura, Takahashi, Rulan, Kim,

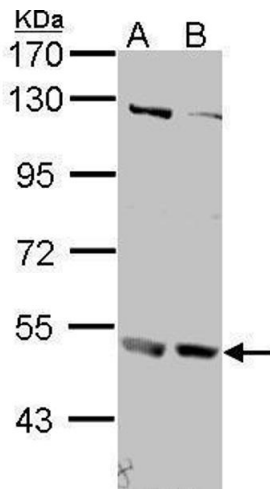
Yanagawa, Nagano, Imakawa, Takahashi: "Estrous cycle stage-dependent manner of type I interferon-stimulated genes induction in the bovine endometrium." in: **The Journal of reproduction and development**, Vol. 63, Issue 3, pp. 211-220, (2018) ([PubMed](#)).

Images



**Immunofluorescence**

**Image 1.** ICC/IF Image Immunofluorescence analysis of methanol-fixed Hep3B, using IFNAR2, antibody at 1:500 dilution.



**Western Blotting**

**Image 2.** WB Image Sample (30 ug of whole cell lysate) A: 293T B: A431 , 7.5% SDS PAGE antibody diluted at 1:1000