

Datasheet for ABIN2856184

anti-MYBPC2 antibody**2** Images[Go to Product page](#)

Overview

Quantity:	100 µL
Target:	MYBPC2
Reactivity:	Human
Host:	Rabbit
Clonality:	Polyclonal
Conjugate:	This MYBPC2 antibody is un-conjugated
Application:	Western Blotting (WB), Immunofluorescence (IF), Immunocytochemistry (ICC)

Product Details

Immunogen:	Recombinant protein encompassing a sequence within the center region of human MYBPC2. The exact sequence is proprietary.
Isotype:	IgG
Cross-Reactivity:	Human
Characteristics:	Rabbit polyclonal antibody to MYBPC2 (myosin binding protein C, fast type) MYBPC2 antibody [N3C1], Internal
Purification:	Purified by antigen-affinity chromatography.

Target Details

Target:	MYBPC2
Alternative Name:	myosin binding protein C, fast type (MYBPC2 Products)

Target Details

Background: Thick filament-associated protein located in the crossbridge region of vertebrate striated muscle a bands. In vitro it binds MHC, F-actin and native thin filaments, and modifies the activity of actin-activated myosin ATPase. It may modulate muscle contraction or may play a more structural role.

Molecular Weight: 128 kDa

Gene ID: 4606

UniProt: [Q14324](#)

Application Details

Application Notes: WB: 1:500-1:3000. ICC/IF: 1:100-1:1000. Optimal dilutions/concentrations should be determined by the researcher. Not tested in other applications.

Comment: Positive Control: HeLaS3

Restrictions: For Research Use only

Handling

Format: Liquid

Concentration: 0.87 mg/mL

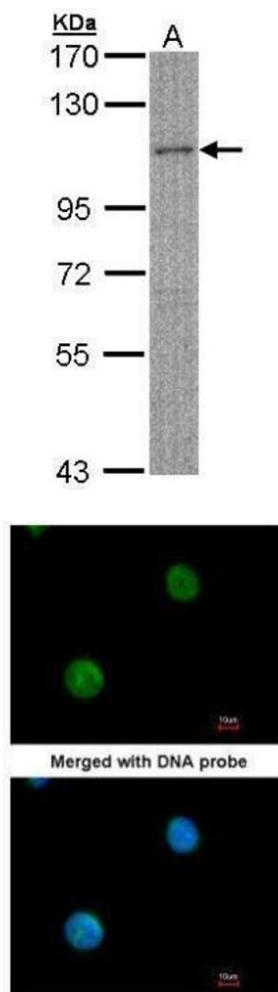
Buffer: 0.1M Tris-Glycine (pH 7), 10 % Glycerol, 0.01 % Thimerosal

Preservative: Thimerosal (Merthiolate)

Precaution of Use: This product contains Thimerosal (Merthiolate): a POISONOUS AND HAZARDOUS SUBSTANCE which should be handled by trained staff only.

Storage: 4 °C,-20 °C

Storage Comment: Store as concentrated solution. Centrifuge briefly prior to opening vial. For short-term storage (1-2 weeks), store at 4°C. For long-term storage, aliquot and store at -20°C or below. Avoid multiple freeze-thaw cycles.



Western Blotting

Image 1. WB Image Sample (30 ug of whole cell lysate) A: HeLa S3 7.5 % SDS PAGE antibody diluted at 1:500

Immunofluorescence

Image 2. ICC/IF Image Immunofluorescence analysis of paraformaldehyde-fixed HeLa, using MYBPC2, antibody at 1:200 dilution.