

Datasheet for ABIN2856185

## anti-MAPKAP Kinase 5 antibody



[Go to Product page](#)

### 1 Image

#### Overview

Quantity:	100 µL
Target:	MAPKAP Kinase 5 (MAPKAPK5)
Reactivity:	Human
Host:	Rabbit
Clonality:	Polyclonal
Conjugate:	This MAPKAP Kinase 5 antibody is un-conjugated
Application:	Western Blotting (WB)

#### Product Details

Immunogen:	Recombinant protein encompassing a sequence within the center region of human PRAK. The exact sequence is proprietary.
Isotype:	IgG
Cross-Reactivity:	Human
Characteristics:	Rabbit Polyclonal antibody to PRAK (mitogen-activated protein kinase-activated protein kinase 5) PRAK antibody [N1C1]
Purification:	Purified by antigen-affinity chromatography.

#### Target Details

Target:	MAPKAP Kinase 5 (MAPKAPK5)
Alternative Name:	mitogen-activated protein kinase-activated protein kinase 5 ( <a href="#">MAPKAPK5 Products</a> )

## Target Details

**Background:** The protein encoded by this gene is a member of the serine/threonine kinase family. In response to cellular stress and proinflammatory cytokines, this kinase is activated through its phosphorylation by MAP kinases including MAPK1/ERK, MAPK14/p38-alpha, and MAPK11/p38-beta. In vitro, this kinase phosphorylates heat shock protein HSP27 at its physiologically relevant sites. Two alternately spliced transcript variants of this gene encoding distinct isoforms have been reported.

Cellular Localization: Cytoplasm (Probable) , Nucleus

**Molecular Weight:** 54 kDa

**Gene ID:** 8550

**UniProt:** [Q8IW41](#)

**Pathways:** [MAPK Signaling](#)

## Application Details

**Application Notes:** WB: 1:500-1:3000. Optimal dilutions/concentrations should be determined by the researcher. Not tested in other applications.

**Comment:** Positive Control: HepG2

**Restrictions:** For Research Use only

## Handling

**Format:** Liquid

**Concentration:** 1 mg/mL

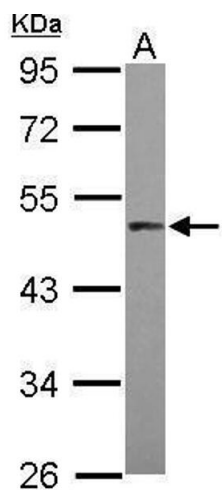
**Buffer:** 1XPBS ( pH 7), 1 % BSA, 20 % Glycerol, 0.01 % Thimerosal

**Preservative:** Thimerosal (Merthiolate)

**Precaution of Use:** This product contains Thimerosal (Merthiolate): a POISONOUS AND HAZARDOUS SUBSTANCE which should be handled by trained staff only.

**Storage:** 4 °C,-20 °C

**Storage Comment:** Store as concentrated solution. Centrifuge briefly prior to opening vial. For short-term storage (1-2 weeks), store at 4°C. For long-term storage, aliquot and store at -20°C or below. Avoid multiple freeze-thaw cycles.



Western Blotting

**Image 1.** WB Image Sample (30 ug of whole cell lysate) A:  
HepG2 10% SDS PAGE antibody diluted at 1:1000