



[Go to Product page](#)

Datasheet for ABIN2856190

## anti-GLO1 antibody

4 Images

1 Publication

### Overview

Quantity:	100 µL
Target:	GLO1
Reactivity:	Human
Host:	Rabbit
Clonality:	Polyclonal
Conjugate:	This GLO1 antibody is un-conjugated
Application:	Western Blotting (WB), Immunofluorescence (IF), Immunohistochemistry (Paraffin-embedded Sections) (IHC (p)), Immunocytochemistry (ICC)

### Product Details

Immunogen:	Recombinant protein encompassing a sequence within the center region of human Glyoxalase I. The exact sequence is proprietary.
Isotype:	IgG
Cross-Reactivity:	Human, Mouse
Characteristics:	Rabbit Polyclonal antibody to Glyoxalase I (glyoxalase I) Glyoxalase I antibody [N1C3]
Purification:	Purified by antigen-affinity chromatography.
Grade:	KO Validated

### Target Details

Target:	GLO1
---------	------

## Target Details

---

Alternative Name:	glyoxalase I ( <a href="#">GLO1 Products</a> )
Background:	The enzyme encoded by this gene is responsible for the catalysis and formation of S-lactoyl-glutathione from methylglyoxal condensation and reduced glutathione. Glyoxalase I is linked to HLA and is localized to 6p21.3-p21.1, between HLA and the centromere.
Molecular Weight:	21 kDa
Gene ID:	2739
UniProt:	<a href="#">Q04760</a>

## Application Details

---

Application Notes:	WB: 1:500-1:3000. ICC/IF: 1:100-1:1000. IHC-P: 1:100-1:1000. Optimal dilutions/concentrations should be determined by the researcher. Not tested in other applications.
Comment:	Positive Control: Mouse brain Validation: KO/KD
Restrictions:	For Research Use only

## Handling

---

Format:	Liquid
Concentration:	0.45 mg/mL
Buffer:	1XPBS ( pH 7), 1 % BSA, 20 % Glycerol, 0.025 % ProClin 300
Preservative:	ProClin
Precaution of Use:	This product contains ProClin: a POISONOUS AND HAZARDOUS SUBSTANCE which should be handled by trained staff only.
Storage:	4 °C,-20 °C
Storage Comment:	Store as concentrated solution. Centrifuge briefly prior to opening vial. For short-term storage (1-2 weeks), store at 4°C. For long-term storage, aliquot and store at -20°C or below. Avoid multiple freeze-thaw cycles.

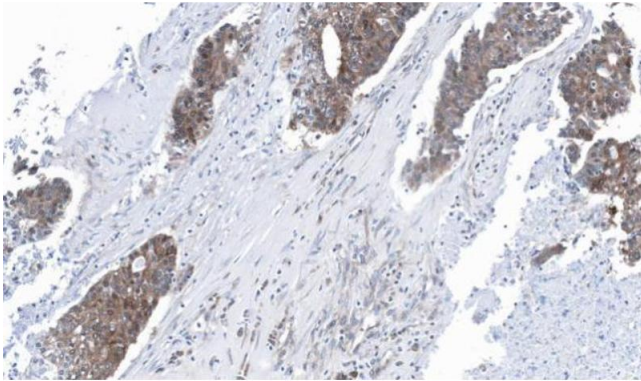
## Publications

---

Product cited in:	Miettinen, Felisiak-Golabek, Wasag, Chmara, Wang, Butzow, Lasota: "Fumarase-deficient
-------------------	---

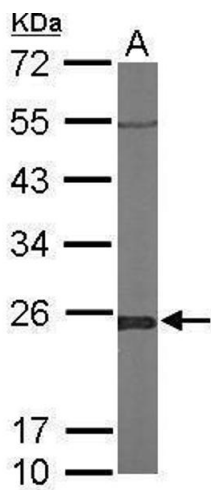
Uterine Leiomyomas: An Immunohistochemical, Molecular Genetic, and Clinicopathologic Study of 86 Cases." in: **The American journal of surgical pathology**, Vol. 40, Issue 12, pp. 1661-1669, (2017) ([PubMed](#)).

Images



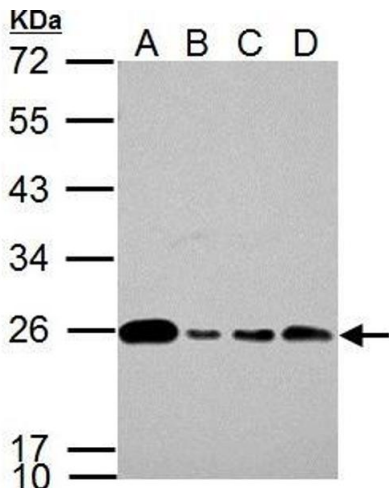
**Immunohistochemistry**

**Image 1.** IHC-P Image Immunohistochemical analysis of paraffin-embedded human ovarian cancer, using GLO1, antibody at 1:100 dilution.



**Western Blotting**

**Image 2.** WB Image Sample (50 ug of whole cell lysate) A: Mouse brain 12% SDS PAGE antibody diluted at 1:1000



**Western Blotting**

**Image 3.** WB Image Glyoxalase I antibody [N1C3] detects Glyoxalase I protein by western blot analysis. A. 30 µg 293T whole cell lysate/extract B. 30 µg A431 whole cell lysate/extract C. 30 µg HeLa whole cell lysate/extract D. 30 µg HepG2 whole cell lysate/extract 12 % SDS-PAGE Glyoxalase I antibody [N1C3] , dilution: 1:1000

## Images

---

Please check the [product details page](#) for more images. Overall 4 images are available for ABIN2856190.