

Datasheet for ABIN2856193

anti-OSGEP antibody**2** Images[Go to Product page](#)

Overview

Quantity:	100 µL
Target:	OSGEP
Reactivity:	Human
Host:	Rabbit
Clonality:	Polyclonal
Conjugate:	This OSGEP antibody is un-conjugated
Application:	Western Blotting (WB), Immunohistochemistry (Paraffin-embedded Sections) (IHC (p))

Product Details

Immunogen:	Recombinant protein encompassing a sequence within the center region of human OSGEP. The exact sequence is proprietary.
Isotype:	IgG
Cross-Reactivity:	Human
Characteristics:	Rabbit Polyclonal antibody to OSGEP (O-sialoglycoprotein endopeptidase) OSGEP antibody
Purification:	Purified by antigen-affinity chromatography.

Target Details

Target:	OSGEP
Alternative Name:	O-sialoglycoprotein endopeptidase (OSGEP Products)

Target Details

Background: O-sialoglycoprotein endopeptidases specifically cleave the polypeptide backbone of membrane glycoproteins that contain clusters of O-linked sialoglycans.

Molecular Weight: 36 kDa

Gene ID: 55644

UniProt: [Q9NPF4](#)

Application Details

Application Notes: WB: 1:500-1:3000. IHC-P: 1:100-1:1000. Optimal dilutions/concentrations should be determined by the researcher. Not tested in other applications.

Comment: Positive Control: Raji

Restrictions: For Research Use only

Handling

Format: Liquid

Concentration: 1 mg/mL

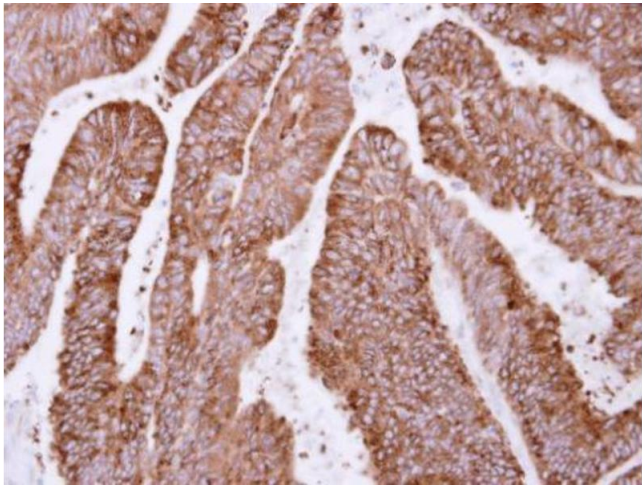
Buffer: 0.1M Tris-Glycine (pH 7), 10 % Glycerol, 0.01 % Thimerosal

Preservative: Thimerosal (Merthiolate)

Precaution of Use: This product contains Thimerosal (Merthiolate): a POISONOUS AND HAZARDOUS SUBSTANCE which should be handled by trained staff only.

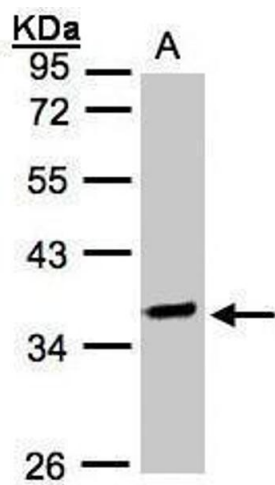
Storage: 4 °C,-20 °C

Storage Comment: Store as concentrated solution. Centrifuge briefly prior to opening vial. For short-term storage (1-2 weeks), store at 4°C. For long-term storage, aliquot and store at -20°C or below. Avoid multiple freeze-thaw cycles.



Immunohistochemistry

Image 1. IHC-P Image Immunohistochemical analysis of paraffin-embedded human colon carcinoma, using OSGEP, antibody at 1:500 dilution.



Western Blotting

Image 2. WB Image Sample(30 ug whole cell lysate) A:Raji , 10% SDS PAGE antibody diluted at 1:2000