

Datasheet for ABIN2856196

anti-FOLR2 antibody[Go to Product page](#)**2** Images**1** Publication

Overview

Quantity:	100 µL
Target:	FOLR2
Reactivity:	Human
Host:	Rabbit
Clonality:	Polyclonal
Application:	Western Blotting (WB), Immunohistochemistry (IHC), Immunohistochemistry (Paraffin-embedded Sections) (IHC (p)), Immunofluorescence (IF), Immunocytochemistry (ICC)

Product Details

Immunogen:	Recombinant protein encompassing a sequence within the center region of human Folate Receptor beta. The exact sequence is proprietary.
Isotype:	IgG
Cross-Reactivity:	Human, Mouse
Characteristics:	Rabbit Polyclonal antibody to Folate receptor beta (folate receptor 2 (fetal)) Folate receptor beta antibody
Purification:	Purified by antigen-affinity chromatography.

Target Details

Target:	FOLR2
Alternative Name:	folate receptor beta (FOLR2 Products)
Background:	The protein encoded by this gene is a member of the folate receptor (FOLR) family, and these

Target Details

genes exist in a cluster on chromosome 11. Members of this gene family have a high affinity for folic acid and for several reduced folic acid derivatives, and they mediate delivery of 5-methyltetrahydrofolate to the interior of cells. This protein has a 68 % and 79 % sequence homology with the FOLR1 and FOLR3 proteins, respectively. Although this protein was originally thought to be specific to placenta, it can also exist in other tissues, and it may play a role in the transport of methotrexate in synovial macrophages in rheumatoid arthritis patients. Multiple transcript variants that encode the same protein have been found for this gene.

Cellular Localization: Cell membrane, Lipid-anchor , GPI-anchor , Secreted

Molecular Weight:	29 kDa
Gene ID:	2350
UniProt:	P14207
Pathways:	Dicarboxylic Acid Transport

Application Details

Application Notes:	WB: 1:500-1:3000. IHC-P: 1:100-1:1000. Optimal dilutions/concentrations should be determined by the researcher. Not tested in other applications.
Restrictions:	For Research Use only

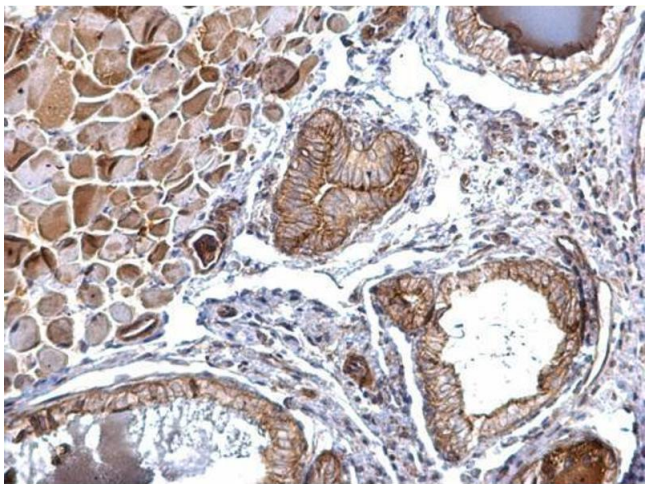
Handling

Format:	Liquid
Concentration:	1.2 mg/mL
Buffer:	1XPBS pH 7, 20 % Glycerol, 0.025 % ProClin 300
Preservative:	ProClin
Precaution of Use:	This product contains ProClin: a POISONOUS AND HAZARDOUS SUBSTANCE which should be handled by trained staff only.
Storage:	4 °C,-20 °C
Storage Comment:	Store as concentrated solution. Centrifuge briefly prior to opening vial. For short-term storage (1-2 weeks), store at 4°C. For long-term storage, aliquot and store at -20°C or below. Avoid multiple freeze-thaw cycles.

Publications

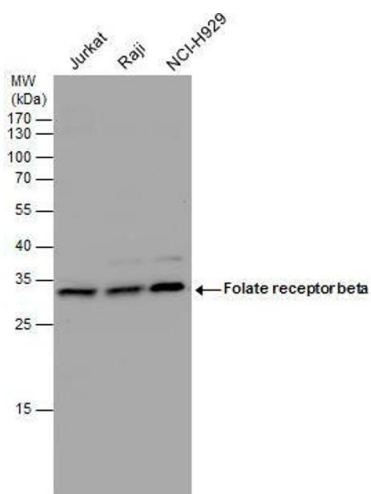
Product cited in: Meredith, MacNeil, Trasler, Baltz: "Growing Mouse Oocytes Transiently Activate Folate Transport via Folate Receptors As They Approach Full Size." in: **Biology of reproduction**, Vol. 94 , Issue 6, pp. 125, (2017) ([PubMed](#)).

Images



Immunohistochemistry

Image 1. IHC-P Image Folate receptor beta antibody detects Folate receptor beta protein at membrane on mouse prostate by immunohistochemical analysis. Sample: Paraffin-embedded mouse prostate. Folate receptor beta antibody , dilution: 1:500.



Western Blotting

Image 2. WB Image Folate receptor beta antibody detects Folate receptor beta protein by western blot analysis. Various whole cell extracts (30 µg) were separated by 12% SDS-PAGE, and the membrane was blotted with Folate receptor beta antibody , diluted by 1:1000.