



[Go to Product page](#)

Datasheet for ABIN2856197

## anti-GIT1 antibody (Internal Region)

### 4 Images

#### Overview

Quantity:	100 µL
Target:	GIT1
Binding Specificity:	Internal Region
Reactivity:	Human, Rat
Host:	Rabbit
Clonality:	Polyclonal
Conjugate:	This GIT1 antibody is un-conjugated
Application:	Western Blotting (WB), Immunohistochemistry (Paraffin-embedded Sections) (IHC (p)), Immunofluorescence (IF), Immunocytochemistry (ICC)

#### Product Details

Immunogen:	Recombinant protein encompassing a sequence within the center region of human GIT1. The exact sequence is proprietary.
Isotype:	IgG
Characteristics:	Rabbit Polyclonal antibody to GIT1 (G protein-coupled receptor kinase interacting ArfGAP 1) GIT1 antibody [N3C2], Internal
Purification:	Purified by antigen-affinity chromatography.

#### Target Details

Target:	GIT1
Alternative Name:	GIT1 ( <a href="#">GIT1 Products</a> )

## Target Details

---

Background: Cellular Localization: Cytoplasm

Molecular Weight: 84 kDa

Gene ID: 28964

## Application Details

---

Application Notes: Suggested dilution Reference ICC/IF 1:100-1:1000\* IHC (Formalin-fixed paraffin-embedded sections) 1:100-1:1000\* Western blot 1:500-1:3000\* Not tested in other applications. \*Optimal dilutions/concentrations should be determined by the researcher.Suggested dilutionReference ICC/IF1:100-1:1000\* IHC (Formalin-fixed paraffin-embedded sections)1:100-1:1000\* Western blot1:500-1:3000\*

Comment: Positive Control: HepG2 , Rat2

Restrictions: For Research Use only

## Handling

---

Format: Liquid

Concentration: 0.65 mg/mL

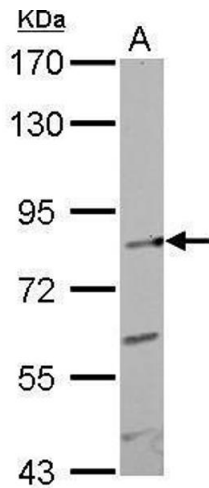
Buffer: 0.1M Tris, 0.1M Glycine, 10 % Glycerol ( pH 7). 0.01 % Thimerosal was added as a preservative.

Preservative: Thimerosal (Merthiolate)

Precaution of Use: This product contains Thimerosal (Merthiolate): a POISONOUS AND HAZARDOUS SUBSTANCE which should be handled by trained staff only.

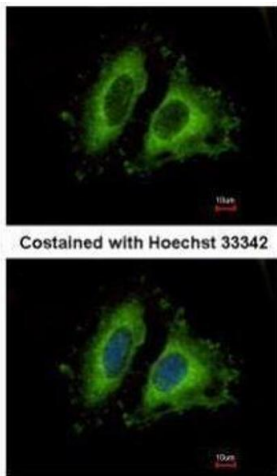
Storage: -20 °C

Storage Comment: Keep as concentrated solution. Aliquot and store at -20°C or below. Avoid multiple freeze-thaw cycles.



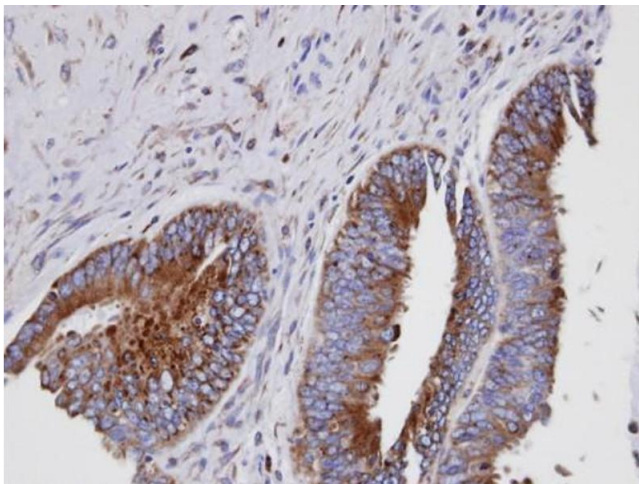
### Western Blotting

**Image 1.** WB Image GIT1 antibody [N3C2], Internal detects GIT1 protein by Western blot analysis. A. 30 µg Rat2 whole cell lysate/extract 7.5 % SDS-PAGE GIT1 antibody [N3C2], Internal , dilution: 1:1000



### Immunofluorescence

**Image 2.** ICC/IF Image Immunofluorescence analysis of methanol-fixed HeLa, using GIT1, antibody at 1:500 dilution.



### Immunohistochemistry

**Image 3.** IHC-P Image Immunohistochemical analysis of paraffin-embedded human mixed ovarian cancer, using GIT1, antibody at 1:100 dilution.

Please check the [product details page](#) for more images. Overall 4 images are available for ABIN2856197.