

Datasheet for ABIN2856199
anti-GNaZ antibody (Center)[Go to Product page](#)

1 Image

Overview

Quantity:	100 µL
Target:	GNaZ
Binding Specificity:	Center
Reactivity:	Human
Host:	Rabbit
Clonality:	Polyclonal
Conjugate:	This GNaZ antibody is un-conjugated
Application:	Western Blotting (WB)

Product Details

Immunogen:	Recombinant protein encompassing a sequence within the center region of human GNAZ. The exact sequence is proprietary.
Isotype:	IgG
Cross-Reactivity:	Rhesus Monkey
Cross-Reactivity (Details):	Rhesus Monkey (100 %)
Characteristics:	Rabbit polyclonal antibody to G alpha z (guanine nucleotide binding protein (G protein), alpha z polypeptide) GNAZ antibody [N2C3]
Purification:	Purified by antigen-affinity chromatography.

Target Details

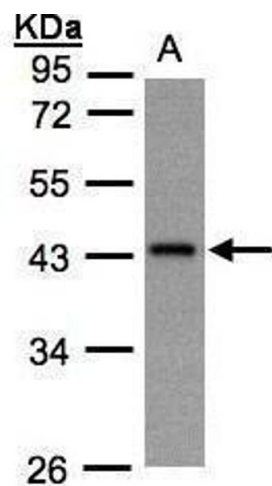
Target:	GNaZ
Alternative Name:	GNAZ (GNaZ Products)
Background:	<p>The protein encoded by this gene is a member of a G protein subfamily that mediates signal transduction in pertussis toxin-insensitive systems. This encoded protein may play a role in maintaining the ionic balance of perilymphatic and endolymphatic cochlear fluids.</p> <p>Cellular Localization: Membrane, Lipid-anchor</p>
Molecular Weight:	41 kDa
Gene ID:	2781
Pathways:	G-protein mediated Events

Application Details

Application Notes:	<p>Suggested dilution Reference Western blot 1:500-1:3000* Not tested in other applications.</p> <p>*Optimal dilutions/concentrations should be determined by the researcher.Suggested dilutionReferenceWestern blot1:500-1:3000*</p>
Comment:	Positive Control: 293T , A431 , HeLaS3 , HepG2 , Molt-4 , Raji
Restrictions:	For Research Use only

Handling

Format:	Liquid
Concentration:	1 mg/mL
Buffer:	0.1M Tris, 0.1M Glycine, 10 % Glycerol (pH 7). 0.01 % Thimerosal was added as a preservative.
Preservative:	Thimerosal (Merthiolate)
Precaution of Use:	This product contains Thimerosal (Merthiolate): a POISONOUS AND HAZARDOUS SUBSTANCE which should be handled by trained staff only.
Storage:	-20 °C
Storage Comment:	Keep as concentrated solution. Aliquot and store at -20°C or below. Avoid multiple freeze-thaw cycles.



Western Blotting

Image 1. WB Image Sample(30 ug whole cell lysate) A:Hep G2 , 10% SDS PAGE antibody diluted at 1:1000