

Datasheet for ABIN2856201
anti-WBSCR22 antibody (Center)

5 Images

1 Publication

[Go to Product page](#)

Overview

Quantity:	100 µL
Target:	WBSCR22
Binding Specificity:	Center
Reactivity:	Human, Mouse
Host:	Rabbit
Clonality:	Polyclonal
Conjugate:	This WBSCR22 antibody is un-conjugated
Application:	Western Blotting (WB), Immunofluorescence (IF), Immunoprecipitation (IP), Immunohistochemistry (Paraffin-embedded Sections) (IHC (p)), Immunocytochemistry (ICC)

Product Details

Immunogen:	Recombinant protein encompassing a sequence within the center region of human WBSCR22. The exact sequence is proprietary.
Isotype:	IgG
Characteristics:	Rabbit Polyclonal antibody to WBSCR22 (Williams Beuren syndrome chromosome region 22) WBSCR22 antibody
Purification:	Purified by antigen-affinity chromatography.

Target Details

Target:	WBSCR22
Alternative Name:	WBSCR22 (WBSCR22 Products)

Target Details

Background: This gene encodes a protein containing a nuclear localization signal and an S-adenosyl-L-methionine binding motif typical of methyltransferases, suggesting that the encoded protein may act on DNA methylation. This gene is deleted in Williams syndrome, a multisystem developmental disorder caused by the deletion of contiguous genes at 7q11.23.

Cellular Localization: Nucleus

Molecular Weight: 32 kDa

Gene ID: 114049

Application Details

Application Notes: Suggested dilution Reference ICC/IF 1:100-1:1000* IHC (Formalin-fixed paraffin-embedded sections) 1:100-1:1000* Immunoprecipitation 1:500-1:1000* Western blot 1:500-1:3000* Not tested in other applications. *Optimal dilutions/concentrations should be determined by the researcher. Suggested dilution Reference ICC/IF 1:100-1:1000* IHC (Formalin-fixed paraffin-embedded sections) 1:100-1:1000* Immunoprecipitation 1:500-1:1000* Western blot 1:500-1:3000*

Comment: Positive Control: HeLa , HCT116 , *A375M ,

Restrictions: For Research Use only

Handling

Format: Liquid

Concentration: 0.42 mg/mL

Buffer: 0.1M Tris, 0.1M Glycine, 10 % Glycerol (pH 7). 0.01 % Thimerosal was added as a preservative.

Preservative: Thimerosal (Merthiolate)

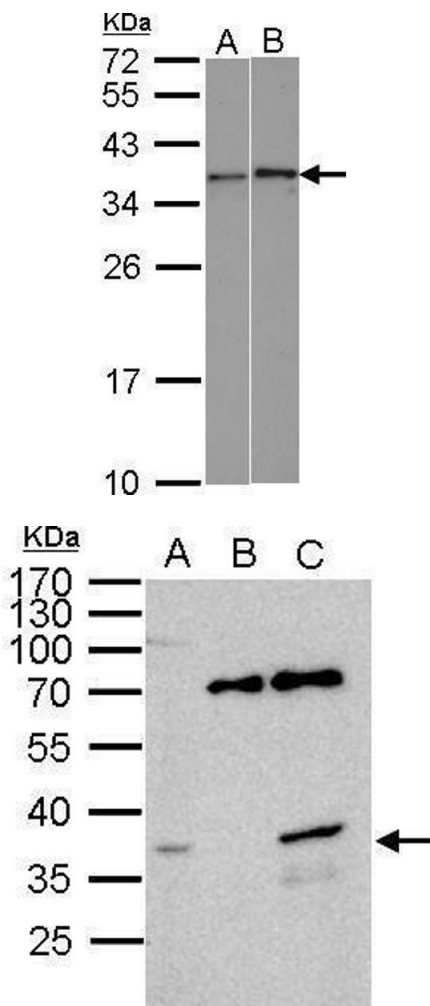
Precaution of Use: This product contains Thimerosal (Merthiolate): a POISONOUS AND HAZARDOUS SUBSTANCE which should be handled by trained staff only.

Storage: -20 °C

Storage Comment: Keep as concentrated solution. Aliquot and store at -20°C or below. Avoid multiple freeze-thaw cycles.

Product cited in: Baxter, Voronkov, Poolman, Galli, Pinali, Goosey, Knight, Krakowiak, Maidstone, Iqbal, Zi, Prehar, Cartwright, Gibbs, Matthews, Adamson, Humphreys, Rebelo-Guiomar, Minczuk, Bechtold, Loudon, Ray: "Cardiac mitochondrial function depends on BUD23 mediated ribosome programming." in: **eLife**, Vol. 9, (2020) ([PubMed](#)).

Images

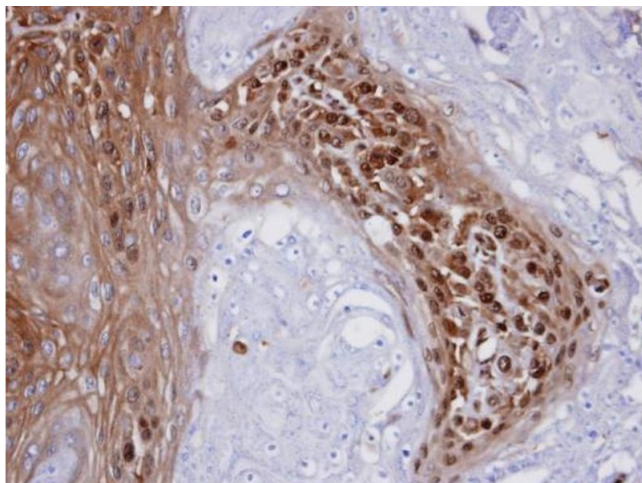


Western Blotting

Image 1. WB Image Sample (30 ug of whole cell lysate) A: HeLa B: HCT116 12% SDS PAGE antibody diluted at 1:1000

Immunoprecipitation

Image 2. IP Image WBSCR22 antibody immunoprecipitates WBSCR22 protein in IP experiments. IP Sample: 1000 µg HeLa whole cell lysate/extract A. 40 µg HeLa whole cell lysate/extract B. Control with 2.5 µg of preimmune rabbit IgG C. Immunoprecipitation of WBSCR22 protein by 2.5 µg of WBSCR22 antibody , 12% SDS-PAGE The immunoprecipitated WBSCR22 protein was detected by WBSCR22 antibody , diluted at 1:1000. EasyBlot anti-rabbit IgG was used as a secondary reagent.



Immunohistochemistry

Image 3. IHC-P Image Immunohistochemical analysis of paraffin-embedded CA922 xenograft, using WBSCR22 , antibody at 1:100 dilution.

Please check the [product details page](#) for more images. Overall 5 images are available for ABIN2856201.