

Datasheet for ABIN2856202  
**anti-RPS6KA1 antibody (Center)**



[Go to Product page](#)

2 Images

## Overview

Quantity:	100 µL
Target:	RPS6KA1
Binding Specificity:	Center
Reactivity:	Human
Host:	Rabbit
Clonality:	Polyclonal
Conjugate:	This RPS6KA1 antibody is un-conjugated
Application:	Western Blotting (WB), Immunofluorescence (IF), Immunocytochemistry (ICC)

## Product Details

Immunogen:	Recombinant protein encompassing a sequence within the center region of human p90 RSK1. The exact sequence is proprietary.
Isotype:	IgG
Cross-Reactivity:	Mouse (Murine), Chicken, Rat (Rattus), Cow (Bovine)
Cross-Reactivity (Details):	Mouse (97 %), Chicken (91 %), Rat (95 %), Bovine (98 %)
Characteristics:	Rabbit Polyclonal antibody to RSK1 (ribosomal protein S6 kinase, 90 kDa, polypeptide 1) p90 RSK1 antibody
Purification:	Purified by antigen-affinity chromatography.

## Target Details

Target:	RPS6KA1
Alternative Name:	p90 RSK1 ( <a href="#">RPS6KA1 Products</a> )
Background:	This gene encodes a member of the RSK (ribosomal S6 kinase) family of serine/threonine kinases. This kinase contains 2 nonidentical kinase catalytic domains and phosphorylates various substrates, including members of the mitogen-activated kinase (MAPK) signalling pathway. The activity of this protein has been implicated in controlling cell growth and differentiation. Alternate transcriptional splice variants, encoding different isoforms, have been characterized.
Molecular Weight:	83 kDa
Gene ID:	6195
Pathways:	<a href="#">MAPK Signaling</a> , <a href="#">Neurotrophin Signaling Pathway</a> , <a href="#">Activation of Innate immune Response</a> , <a href="#">Toll-Like Receptors Cascades</a>

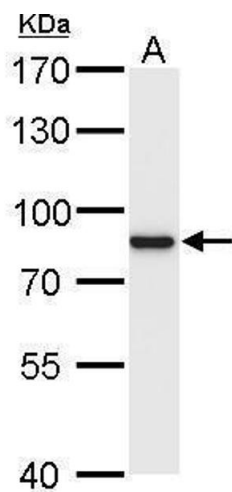
## Application Details

Application Notes:	Suggested dilution Reference ICC/IF 1:100-1:1000* Western blot 1:500-1:3000* Not tested in other applications. *Optimal dilutions/concentrations should be determined by the researcher.Suggested dilutionReferenceICC/IF1:100-1:1000* Western blot1:500-1:3000*
Comment:	Positive Control: HepG2
Restrictions:	For Research Use only

## Handling

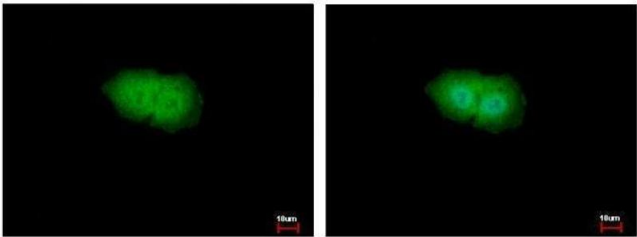
Format:	Liquid
Concentration:	0.47 mg/mL
Buffer:	0.1M Tris, 0.1M Glycine, 10 % Glycerol ( pH 7). 0.01 % Thimerosal was added as a preservative.
Preservative:	Thimerosal (Merthiolate)
Precaution of Use:	This product contains Thimerosal (Merthiolate): a POISONOUS AND HAZARDOUS SUBSTANCE which should be handled by trained staff only.
Storage:	-20 °C
Storage Comment:	Keep as concentrated solution. Aliquot and store at -20°C or below. Avoid multiple freeze-thaw

cycles.



**Western Blotting**

**Image 1.** WB Image p90 RSK1 antibody detects p90 RSK1 protein by Western blot analysis. A. 30 µg HepG2 whole cell lysate/extract 7.5 % SDS-PAGE p90 RSK1 antibody , dilution: 1:1000



**Immunofluorescence**

**Image 2.** ICC/IF Image p90 RSK1 antibody detects p90 RSK1 protein at Cytoplasm and Nucleus by immunofluorescent analysis. Sample: HepG2 cells were fixed in 4% paraformaldehyde at RT for 15 min. Green: p90 RSK1 protein stained by RSK1 antibody , diluted at 1:500. Blue: Hoechst 33343 staining.