

Datasheet for ABIN2856204

anti-MDH2 antibody

6 Images

[Go to Product page](#)

Overview

Quantity:	100 µL
Target:	MDH2
Reactivity:	Human
Host:	Rabbit
Clonality:	Polyclonal
Conjugate:	This MDH2 antibody is un-conjugated
Application:	Western Blotting (WB), Immunofluorescence (IF), Immunohistochemistry (Paraffin-embedded Sections) (IHC (p)), Immunocytochemistry (ICC)

Product Details

Immunogen:	Recombinant protein encompassing a sequence within the center region of human MDH2. The exact sequence is proprietary.
Isotype:	IgG
Cross-Reactivity:	Human, Mouse, Rat
Characteristics:	Rabbit Polyclonal antibody to MDH2 (malate dehydrogenase 2, NAD (mitochondrial)) MDH2 antibody
Purification:	Purified by antigen-affinity chromatography.
Grade:	KO Validated

Target Details

Target:	MDH2
---------	------

Target Details

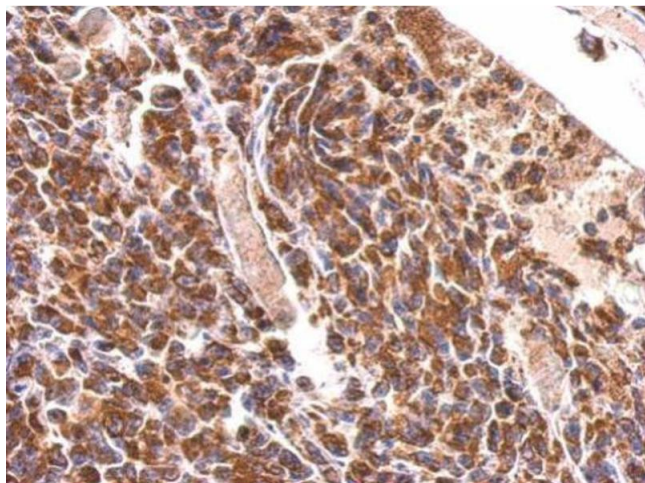
Alternative Name:	malate dehydrogenase 2 (MDH2 Products)
Background:	<p>Malate dehydrogenase catalyzes the reversible oxidation of malate to oxaloacetate, utilizing the NAD/NADH cofactor system in the citric acid cycle. The protein encoded by this gene is localized to the mitochondria and may play pivotal roles in the malate-aspartate shuttle that operates in the metabolic coordination between cytosol and mitochondria.</p> <p>Cellular Localization: Mitochondrion matrix</p>
Molecular Weight:	36 kDa
Gene ID:	4191
UniProt:	P40926

Application Details

Application Notes:	WB: 1:500-1:20000. ICC/IF: 1:100-1:1000. IHC-P: 1:100-1:1000. Optimal dilutions/concentrations should be determined by the researcher. Not tested in other applications.
Comment:	<p>Positive Control: Mouse brain , rat lung , 293T , A431 , HeLa , HepG2</p> <p>Validation: KO/KD</p>
Restrictions:	For Research Use only

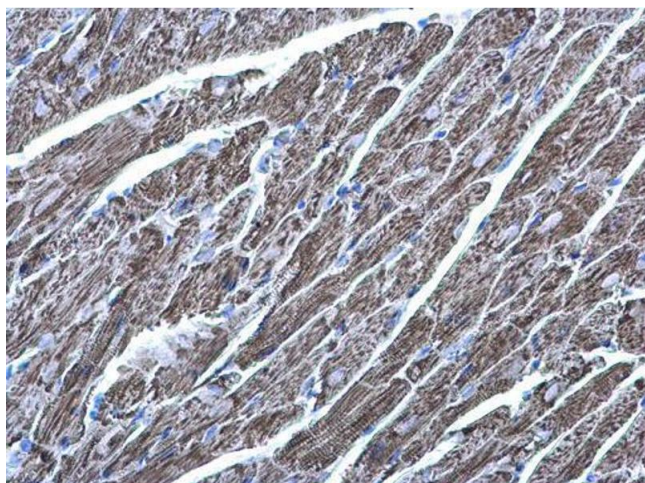
Handling

Format:	Liquid
Concentration:	0.38 mg/mL
Buffer:	1XPBS (pH 7), 1 % BSA, 20 % Glycerol, 0.025 % ProClin 300
Preservative:	ProClin
Precaution of Use:	This product contains ProClin: a POISONOUS AND HAZARDOUS SUBSTANCE which should be handled by trained staff only.
Storage:	4 °C,-20 °C
Storage Comment:	Store as concentrated solution. Centrifuge briefly prior to opening vial. For short-term storage (1-2 weeks), store at 4°C. For long-term storage, aliquot and store at -20°C or below. Avoid multiple freeze-thaw cycles.



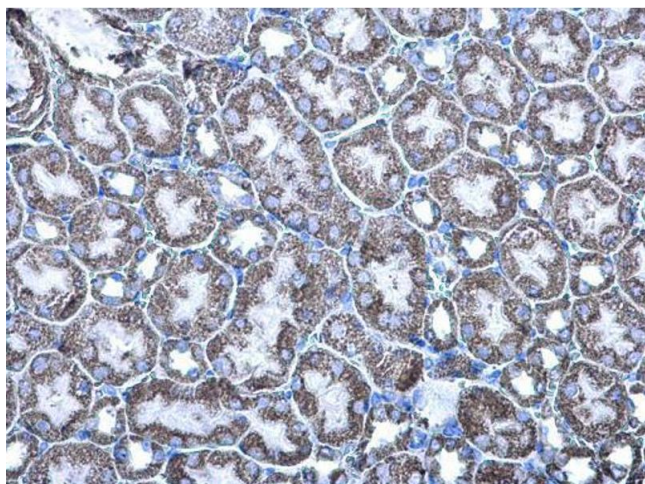
Immunohistochemistry

Image 1. IHC-P Image MDH2 antibody detects MDH2 protein at cytosol on H1299 xenograft by immunohistochemical analysis. Sample: Paraffin-embedded H1299 xenograft. MDH2 antibody , dilution: 1:500.



Immunohistochemistry

Image 2. IHC-P Image MDH2 antibody detects MDH2 protein at mitochondria on mouse heart by immunohistochemical analysis. Sample: Paraffin-embedded mouse heart. MDH2 antibody , diluted at 1:500.



Immunohistochemistry

Image 3. IHC-P Image MDH2 antibody detects MDH2 protein at cytoplasm on mouse kidney by immunohistochemical analysis. Sample: Paraffin-embedded mouse kidney. MDH2 antibody , diluted at 1:500.

Please check the [product details page](#) for more images. Overall 6 images are available for ABIN2856204.