

Datasheet for ABIN2856211  
**anti-CYP24A1 antibody (Center)**

## 2 Images

[Go to Product page](#)

## Overview

Quantity:	100 µL
Target:	CYP24A1
Binding Specificity:	Center
Reactivity:	Human, Mouse
Host:	Rabbit
Clonality:	Polyclonal
Conjugate:	This CYP24A1 antibody is un-conjugated
Application:	Western Blotting (WB), Immunohistochemistry (Paraffin-embedded Sections) (IHC (p))

## Product Details

Immunogen:	Recombinant protein encompassing a sequence within the center region of human CYP24A1. The exact sequence is proprietary.
Isotype:	IgG
Cross-Reactivity:	Mouse (Murine), Rat (Rattus)
Cross-Reactivity (Details):	mouse (87 %), Rat (88 %)
Characteristics:	Rabbit Polyclonal antibody to CYP24A1 (cytochrome P450, family 24, subfamily A, polypeptide 1) CYP24A1 antibody
Purification:	Purified by antigen-affinity chromatography.

## Target Details

Target:	CYP24A1
Alternative Name:	CYP24A1 ( <a href="#">CYP24A1 Products</a> )
Background:	<p>This gene encodes a member of the cytochrome P450 superfamily of enzymes. The cytochrome P450 proteins are monooxygenases which catalyze many reactions involved in drug metabolism and synthesis of cholesterol, steroids and other lipids. This mitochondrial protein initiates the degradation of 1,25-dihydroxyvitamin D3, the physiologically active form of vitamin D3, by hydroxylation of the side chain. In regulating the level of vitamin D3, this enzyme plays a role in calcium homeostasis and the vitamin D endocrine system. Alternatively spliced transcript variants encoding different isoforms have been found for this gene.</p> <p>Cellular Localization: Mitochondrion</p>
Molecular Weight:	59 kDa
Gene ID:	1591
Pathways:	<a href="#">Metabolism of Steroid Hormones and Vitamin D</a>

## Application Details

Application Notes:	<p>Suggested dilution Reference IHC (Formalin-fixed paraffin-embedded sections) 1:100-1:1000* Western blot 1:500-1:3000* Not tested in other applications. *Optimal dilutions/concentrations should be determined by the researcher.Suggested dilutionReferenceIHC (Formalin-fixed paraffin-embedded sections)1:100-1:1000* Western blot1:500-1:3000*</p>
Comment:	Positive Control: 293T , A431 , H1299 , HeLaS3 , HepG2 , Molt-4 , Raji
Restrictions:	For Research Use only

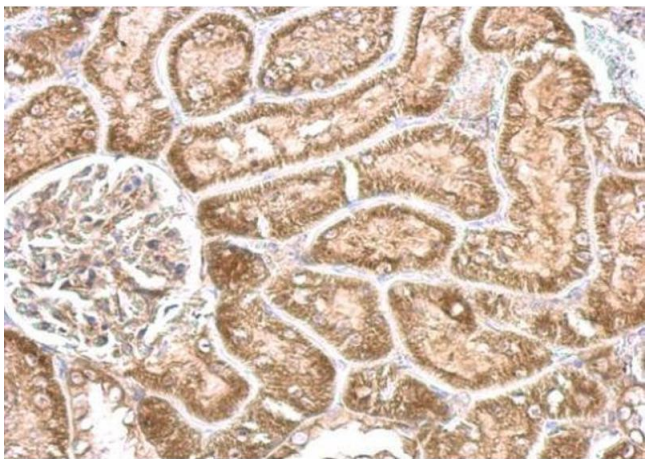
## Handling

Format:	Liquid
Concentration:	1 mg/mL
Buffer:	0.1M Tris, 0.1M Glycine, 10 % Glycerol ( pH 7). 0.01 % Thimerosal was added as a preservative.
Preservative:	Thimerosal (Merthiolate)
Precaution of Use:	This product contains Thimerosal (Merthiolate): a POISONOUS AND HAZARDOUS SUBSTANCE which should be handled by trained staff only.
Storage:	-20 °C

Handling

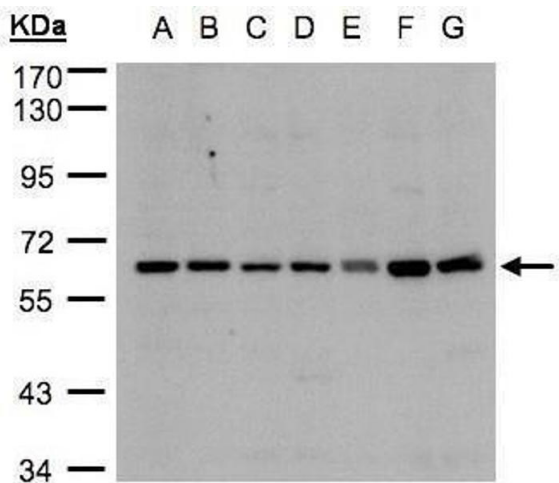
Storage Comment: Keep as concentrated solution. Aliquot and store at -20°C or below. Avoid multiple freeze-thaw cycles.

Images



Immunohistochemistry

**Image 1.** IHC-P Image CYP24A1 antibody detects CYP24A1 protein at cytosol on mouse kidney by immunohistochemical analysis. Sample: Paraffin-embedded mouse kidney. CYP24A1 antibody , dilution: 1:500.



Western Blotting

**Image 2.** WB Image Sample(30µg whole cell lysate) A: 293T B: A431 , C: H1299 D: HeLa S3 , E: Hep G2 , F: MOLT4 , G: Raji , 7.5% SDS PAGE antibody diluted at 1:3000