



[Go to Product page](#)

Datasheet for ABIN2856216

anti-SUOX antibody

4 Images

Overview

Quantity:	100 µL
Target:	SUOX
Reactivity:	Human
Host:	Rabbit
Clonality:	Polyclonal
Conjugate:	This SUOX antibody is un-conjugated
Application:	Western Blotting (WB), Immunocytochemistry (ICC), Immunofluorescence (IF), Immunohistochemistry (Paraffin-embedded Sections) (IHC (p))

Product Details

Immunogen:	Recombinant protein encompassing a sequence within the center region of human SUOX. The exact sequence is proprietary.
Isotype:	IgG
Cross-Reactivity:	Human, Mouse
Characteristics:	Rabbit Polyclonal antibody to SUOX (sulfite oxidase) SUOX antibody [N1C1]
Purification:	Purified by antigen-affinity chromatography.

Target Details

Target:	SUOX
Alternative Name:	sulfite oxidase (SUOX Products)

Target Details

Background: Sulfite oxidase is a homodimeric protein localized to the intermembrane space of mitochondria. Each subunit contains a heme domain and a molybdopterin-binding domain. The enzyme catalyzes the oxidation of sulfite to sulfate, the final reaction in the oxidative degradation of the sulfur amino acids cysteine and methionine. Sulfite oxidase deficiency results in neurological abnormalities which are often fatal at an early age. Alternative splicing results in multiple transcript variants encoding identical proteins.

Cellular Localization: Mitochondrion intermembrane space

Molecular Weight: 60 kDa

Gene ID: 6821

UniProt: [P51687](#)

Application Details

Application Notes: WB: 1:500-1:3000. ICC/IF: 1:100-1:1000. IHC-P: 1:100-1:1000. Optimal dilutions/concentrations should be determined by the researcher. Not tested in other applications.

Comment: Positive Control: Mouse liver , HepG2

Restrictions: For Research Use only

Handling

Format: Liquid

Concentration: 1 mg/mL

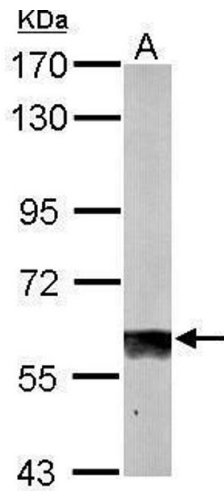
Buffer: 0.1M Tris-Glycine (pH 7), 10 % Glycerol, 0.01 % Thimerosal

Preservative: Thimerosal (Merthiolate)

Precaution of Use: This product contains Thimerosal (Merthiolate): a POISONOUS AND HAZARDOUS SUBSTANCE which should be handled by trained staff only.

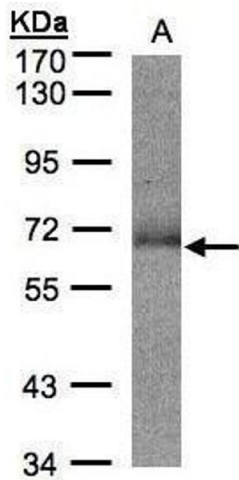
Storage: 4 °C,-20 °C

Storage Comment: Store as concentrated solution. Centrifuge briefly prior to opening vial. For short-term storage (1-2 weeks), store at 4°C. For long-term storage, aliquot and store at -20°C or below. Avoid multiple freeze-thaw cycles.



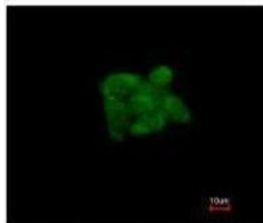
Western Blotting

Image 1. WB Image Sample (50 ug of whole cell lysate) A: mouse liver 7.5% SDS PAGE antibody diluted at 1:1000



Western Blotting

Image 2. WB Image Sample(30 ug whole cell lysate) A:Hep G2, 7.5% SDS PAGE antibody diluted at 1:500



Costained with Hoechst 33342



Immunofluorescence

Image 3. ICC/IF Image Immunofluorescence analysis of methanol-fixed HepG2, using SUOX, antibody at 1:200 dilution.

Please check the [product details page](#) for more images. Overall 4 images are available for ABIN2856216.