

Datasheet for ABIN2856217

anti-DMRT1 antibody[Go to Product page](#)**1** Image

Overview

Quantity:	100 µL
Target:	DMRT1
Reactivity:	Human
Host:	Rabbit
Clonality:	Polyclonal
Conjugate:	This DMRT1 antibody is un-conjugated
Application:	Western Blotting (WB)

Product Details

Immunogen:	Recombinant protein encompassing a sequence within the center region of human DMRT1. The exact sequence is proprietary.
Isotype:	IgG
Cross-Reactivity:	Human
Characteristics:	Rabbit Polyclonal antibody to DMRT1 (doublesex and mab-3 related transcription factor 1) DMRT1 antibody
Purification:	Purified by antigen-affinity chromatography.

Target Details

Target:	DMRT1
Alternative Name:	doublesex and mab-3 related transcription factor 1 (DMRT1 Products)

Target Details

Background: This gene is found in a cluster with two other members of the gene family, having in common a zinc finger-like DNA-binding motif (DM domain). The DM domain is an ancient, conserved component of the vertebrate sex-determining pathway that is also a key regulator of male development in flies and nematodes. This gene exhibits a gonad-specific and sexually dimorphic expression pattern. Defective testicular development and XY feminization occur when this gene is hemizygous.

Cellular Localization: Nucleus

Molecular Weight: 39 kDa

Gene ID: 1761

UniProt: [Q9Y5R6](#)

Application Details

Application Notes: WB: 1:500-1:3000. Optimal dilutions/concentrations should be determined by the researcher.
Not tested in other applications.

Comment: Positive Control: K562

Restrictions: For Research Use only

Handling

Format: Liquid

Concentration: 1.03 mg/mL

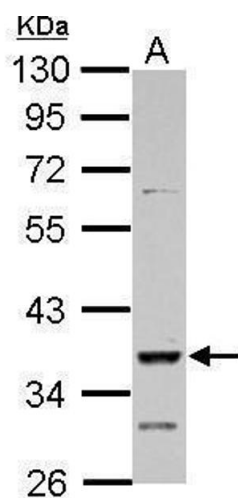
Buffer: 1XPBS (pH 7), 20 % Glycerol, 0.01 % Thimerosal

Preservative: Thimerosal (Merthiolate)

Precaution of Use: This product contains Thimerosal (Merthiolate): a POISONOUS AND HAZARDOUS SUBSTANCE which should be handled by trained staff only.

Storage: 4 °C,-20 °C

Storage Comment: Store as concentrated solution. Centrifuge briefly prior to opening vial. For short-term storage (1-2 weeks), store at 4°C. For long-term storage, aliquot and store at -20°C or below. Avoid multiple freeze-thaw cycles.



Western Blotting

Image 1. WB Image Sample (30 ug of whole cell lysate) A:
K562 10% SDS PAGE antibody diluted at 1:3000