



[Go to Product page](#)

Datasheet for ABIN2856218

## anti-CASQ2 antibody

### 3 Images

#### Overview

Quantity:	100 µL
Target:	CASQ2
Reactivity:	Human
Host:	Rabbit
Clonality:	Polyclonal
Conjugate:	This CASQ2 antibody is un-conjugated
Application:	Western Blotting (WB), Immunohistochemistry (Paraffin-embedded Sections) (IHC (p))

#### Product Details

Immunogen:	Recombinant protein encompassing a sequence within the center region of human Calsequestrin 2. The exact sequence is proprietary.
Isotype:	IgG
Cross-Reactivity:	Human, Mouse
Characteristics:	Rabbit polyclonal antibody to Calsequestrin-2 (calsequestrin 2 (cardiac muscle)) Calsequestrin-2 antibody
Purification:	Purified by antigen-affinity chromatography.

#### Target Details

Target:	CASQ2
Alternative Name:	calsequestrin 2 ( <a href="#">CASQ2 Products</a> )

## Target Details

---

**Background:** The protein encoded by this gene specifies the cardiac muscle family member of the calsequestrin family. Calsequestrin is localized to the sarcoplasmic reticulum in cardiac and slow skeletal muscle cells. The protein is a calcium binding protein that stores calcium for muscle function. Mutations in this gene cause stress-induced polymorphic ventricular tachycardia, also referred to as catecholaminergic polymorphic ventricular tachycardia 2 (CPVT2), a disease characterized by bidirectional ventricular tachycardia that may lead to cardiac arrest.

Cellular Localization: Sarcoplasmic reticulum lumen

---

**Molecular Weight:** 46 kDa

---

**Gene ID:** 845

---

**UniProt:** [O14958](#)

---

**Pathways:** [Negative Regulation of Transporter Activity](#)

---

## Application Details

---

**Application Notes:** WB: 1:500-1:3000. IHC-P: 1:100-1:1000. Optimal dilutions/concentrations should be determined by the researcher. Not tested in other applications.

---

**Comment:** Positive Control: HCT116

---

**Restrictions:** For Research Use only

---

## Handling

---

**Format:** Liquid

---

**Concentration:** 0.68 mg/mL

---

**Buffer:** 0.1M Tris-Glycine ( pH 7), 10 % Glycerol, 0.01 % Thimerosal

---

**Preservative:** Thimerosal (Merthiolate)

---

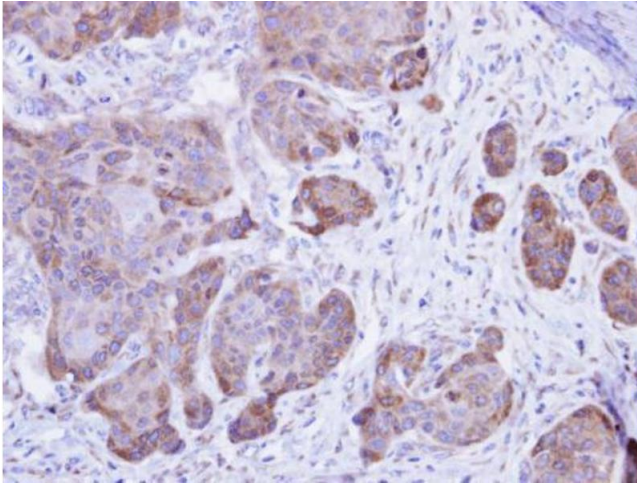
**Precaution of Use:** This product contains Thimerosal (Merthiolate): a POISONOUS AND HAZARDOUS SUBSTANCE which should be handled by trained staff only.

---

**Storage:** 4 °C, -20 °C

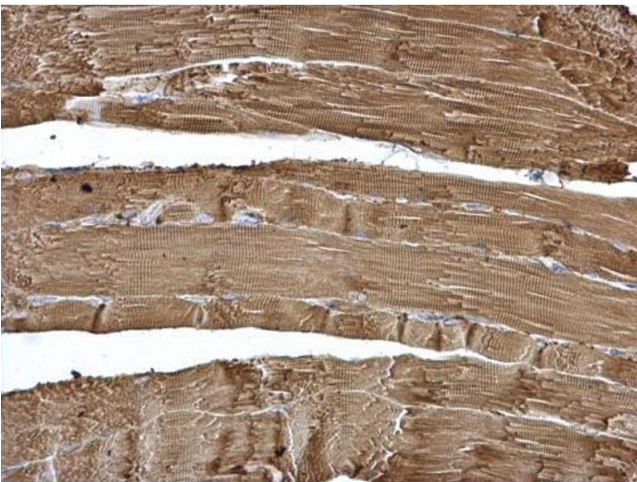
---

**Storage Comment:** Store as concentrated solution. Centrifuge briefly prior to opening vial. For short-term storage (1-2 weeks), store at 4°C. For long-term storage, aliquot and store at -20°C or below. Avoid multiple freeze-thaw cycles.



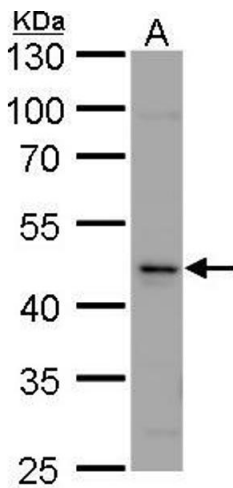
### Immunohistochemistry

**Image 1.** IHC-P Image Immunohistochemical analysis of paraffin-embedded Cal27 xenograft , using Calsequestrin-2, antibody at 1:500 dilution.



### Immunohistochemistry

**Image 2.** IHC-P Image Calsequestrin-2 antibody detects Calsequestrin-2 protein at cytosol on mouse muscle by immunohistochemical analysis. Sample: Paraffin-embedded mouse muscle. Calsequestrin-2 antibody , dilution: 1:500.



### Western Blotting

**Image 3.** WB Image Calsequestrin 2 antibody detects Calsequestrin 2 protein by western blot analysis. A. 30  $\mu$ g HCT116 whole cell lysate/extract 10 % SDS-PAGE Calsequestrin 2 antibody , dilution: 1:1000