



[Go to Product page](#)

Datasheet for ABIN2856221 anti-PSKH2 antibody

3 Images

Overview

Quantity:	100 µL
Target:	PSKH2
Reactivity:	Human
Host:	Rabbit
Clonality:	Polyclonal
Conjugate:	This PSKH2 antibody is un-conjugated
Application:	Western Blotting (WB), Immunofluorescence (IF), Immunohistochemistry (Paraffin-embedded Sections) (IHC (p)), Immunocytochemistry (ICC)

Product Details

Immunogen:	Recombinant protein encompassing a sequence within the center region of human PSKH2. The exact sequence is proprietary.
Isotype:	IgG
Cross-Reactivity:	Human
Characteristics:	Rabbit polyclonal antibody to PSKH2 (protein serine kinase H2) PSKH2 antibody [N2C3]
Purification:	Purified by antigen-affinity chromatography.

Target Details

Target:	PSKH2
Alternative Name:	protein serine kinase H2 (PSKH2 Products)

Target Details

Molecular Weight: 43 kDa

Gene ID: 85481

UniProt: [Q96QS6](#)

Application Details

Application Notes: WB: 1:500-1:3000. ICC/IF: 1:100-1:1000. IHC-P: 1:100-1:1000. Optimal dilutions/concentrations should be determined by the researcher. Not tested in other applications.

Comment: Positive Control: Molt-4 , Raji

Restrictions: For Research Use only

Handling

Format: Liquid

Concentration: 1 mg/mL

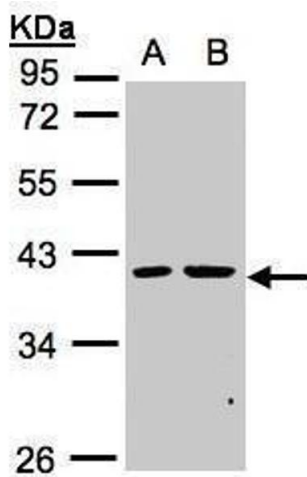
Buffer: 0.1M Tris-Glycine (pH 7), 10 % Glycerol, 0.01 % Thimerosal

Preservative: Thimerosal (Merthiolate)

Precaution of Use: This product contains Thimerosal (Merthiolate): a POISONOUS AND HAZARDOUS SUBSTANCE which should be handled by trained staff only.

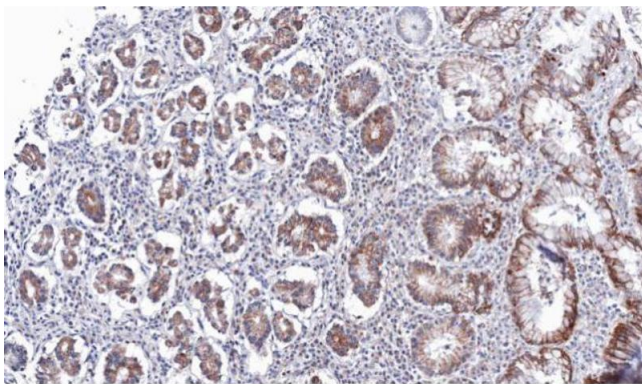
Storage: 4 °C,-20 °C

Storage Comment: Store as concentrated solution. Centrifuge briefly prior to opening vial. For short-term storage (1-2 weeks), store at 4°C. For long-term storage, aliquot and store at -20°C or below. Avoid multiple freeze-thaw cycles.



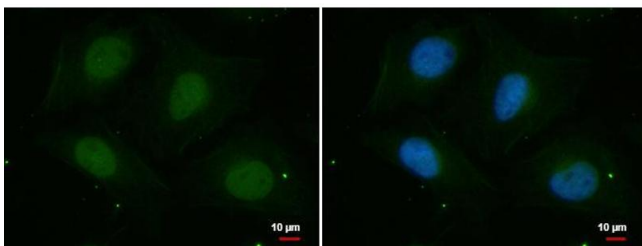
Western Blotting

Image 1. WB Image Sample(30 ug whole cell lysate)
A:MOLT4 , B:Raji , 10% SDS PAGE antibody diluted at 1:1000



Immunohistochemistry

Image 2. IHC-P Image Immunohistochemical analysis of paraffin-embedded human gastric cancer, using PSKH2, antibody at 1:100 dilution.



Immunofluorescence

Image 3. ICC/IF Image PSKH2 antibody [N2C3] detects PSKH2 protein at nucleus by immunofluorescent analysis. Sample: HeLa cells were fixed in 4% paraformaldehyde at RT for 15 min. Green: PSKH2 protein stained by PSKH2 antibody [N2C3] , diluted at 1:100. Blue: Hoechst 33342 staining.