

Datasheet for ABIN2856222

anti-RIPK2 antibody**3** Images[Go to Product page](#)

Overview

Quantity:	100 µL
Target:	RIPK2
Reactivity:	Human
Host:	Rabbit
Clonality:	Polyclonal
Conjugate:	This RIPK2 antibody is un-conjugated
Application:	Western Blotting (WB), Immunofluorescence (IF), Immunocytochemistry (ICC), Immunohistochemistry (Paraffin-embedded Sections) (IHC (p))

Product Details

Immunogen:	Recombinant protein encompassing a sequence within the center region of human RIP2. The exact sequence is proprietary.
Isotype:	IgG
Cross-Reactivity:	Human
Characteristics:	Rabbit Polyclonal antibody to RIP2 (receptor-interacting serine-threonine kinase 2) RIP2 antibody [N3C3]
Purification:	Purified by antigen-affinity chromatography.
Grade:	KO Validated

Target Details

Target:	RIPK2
---------	-------

Target Details

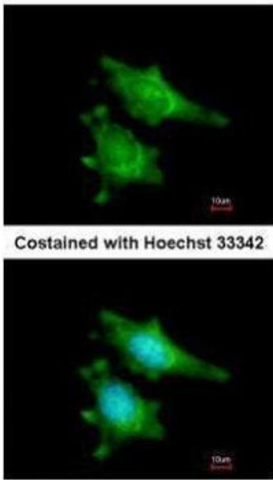
Alternative Name:	receptor interacting serine/threonine kinase 2 (RIPK2 Products)
Background:	<p>This gene encodes a member of the receptor-interacting protein (RIP) family of serine/threonine protein kinases. The encoded protein contains a C-terminal caspase activation and recruitment domain (CARD), and is a component of signaling complexes in both the innate and adaptive immune pathways. It is a potent activator of NF-kappaB and inducer of apoptosis in response to various stimuli.</p> <p>Cellular Localization: Cytoplasm</p>
Molecular Weight:	61 kDa
Gene ID:	8767
UniProt:	O43353
Pathways:	TCR Signaling , Neurotrophin Signaling Pathway , Activation of Innate immune Response , Cellular Response to Molecule of Bacterial Origin , Positive Regulation of Immune Effector Process , Toll-Like Receptors Cascades

Application Details

Application Notes:	WB: 1:500-1:3000. ICC/IF: 1:100-1:1000. IHC-P: 1:100-1:1000. Optimal dilutions/concentrations should be determined by the researcher. Not tested in other applications.
Comment:	<p>Positive Control: Raji , HeLa</p> <p>Validation: KO/KD</p>
Restrictions:	For Research Use only

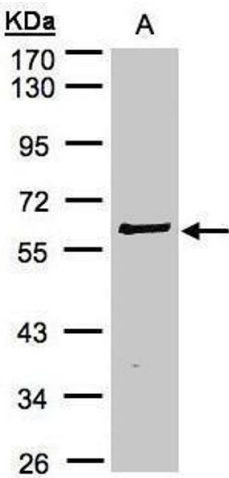
Handling

Format:	Liquid
Concentration:	2.32 mg/mL
Buffer:	PBS, No preservative
Preservative:	Without preservative
Storage:	4 °C, -20 °C
Storage Comment:	Store as concentrated solution. Centrifuge briefly prior to opening vial. For short-term storage (1-2 weeks), store at 4°C. For long-term storage, aliquot and store at -20°C or below. Avoid multiple freeze-thaw cycles.



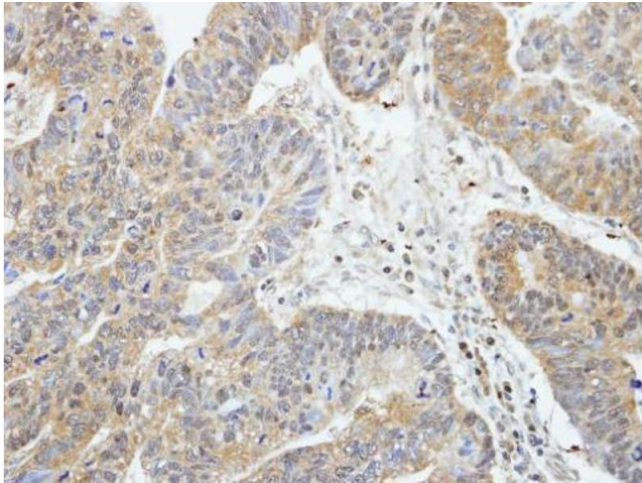
Immunofluorescence

Image 1. ICC/IF Image Immunofluorescence analysis of methanol-fixed HeLa, using RIP2, antibody at 1:200 dilution.



Western Blotting

Image 2. WB Image Sample(30 µg of whole cell lysate) A:Raji, 10% SDS PAGE antibody diluted at 1:2000



Immunohistochemistry

Image 3. IHC-P Image Immunohistochemical analysis of paraffin-embedded human gastric cancer, using RIP2, antibody at 1:100 dilution.