

Datasheet for ABIN2856223
anti-HMOX2 antibody



[Go to Product page](#)

1 Image

Overview

Quantity:	100 µL
Target:	HMOX2
Reactivity:	Human
Host:	Rabbit
Clonality:	Polyclonal
Conjugate:	This HMOX2 antibody is un-conjugated
Application:	Western Blotting (WB)

Product Details

Immunogen:	Recombinant protein encompassing a sequence within the center region of human Heme Oxygenase 2. The exact sequence is proprietary.
Isotype:	IgG
Cross-Reactivity:	Human
Characteristics:	Rabbit Polyclonal antibody to Heme oxygenase 2 (heme oxygenase (decycling) 2) Heme oxygenase 2 antibody [N1C3]
Purification:	Purified by antigen-affinity chromatography.

Target Details

Target:	HMOX2
Alternative Name:	heme oxygenase 2 (HMOX2 Products)

Target Details

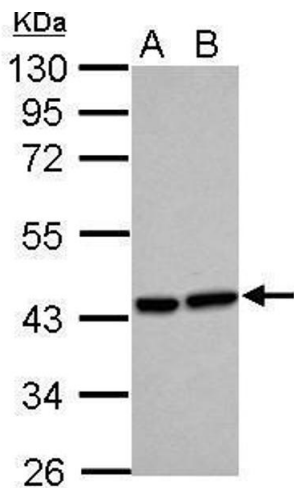
Background:	<p>Heme oxygenase, an essential enzyme in heme catabolism, cleaves heme to form biliverdin, which is subsequently converted to bilirubin by biliverdin reductase, and carbon monoxide, a putative neurotransmitter. Heme oxygenase activity is induced by its substrate heme and by various nonheme substances. Heme oxygenase occurs as 2 isozymes, an inducible heme oxygenase-1 and a constitutive heme oxygenase-2. HMOX1 and HMOX2 belong to the heme oxygenase family. Alternative splice variants encoding the same protein have been identified at this locus.</p> <p>Cellular Localization: Microsome , Endoplasmic reticulum</p>
Molecular Weight:	36 kDa
Gene ID:	3163
UniProt:	P30519
Pathways:	Transition Metal Ion Homeostasis

Application Details

Application Notes:	<p>WB: 1:500-1:3000. Optimal dilutions/concentrations should be determined by the researcher.</p> <p>Not tested in other applications.</p>
Comment:	Positive Control: HeLa , HepG2
Restrictions:	For Research Use only

Handling

Format:	Liquid
Concentration:	0.8 mg/mL
Buffer:	0.1M Tris-Glycine (pH 7), 20 % Glycerol, 0.01 % Thimerosal
Preservative:	Thimerosal (Merthiolate)
Precaution of Use:	This product contains Thimerosal (Merthiolate): a POISONOUS AND HAZARDOUS SUBSTANCE which should be handled by trained staff only.
Storage:	4 °C,-20 °C
Storage Comment:	Store as concentrated solution. Centrifuge briefly prior to opening vial. For short-term storage (1-2 weeks), store at 4°C. For long-term storage, aliquot and store at -20°C or below. Avoid multiple freeze-thaw cycles.



Western Blotting

Image 1. WB Image Sample (30 ug of whole cell lysate) A: HeLa B: HepG2 10% SDS PAGE antibody diluted at 1:500