

Datasheet for ABIN2856228

anti-TBCC antibody**3** Images[Go to Product page](#)

Overview

Quantity:	100 µL
Target:	TBCC
Reactivity:	Human
Host:	Rabbit
Clonality:	Polyclonal
Conjugate:	This TBCC antibody is un-conjugated
Application:	Western Blotting (WB), Immunohistochemistry (Paraffin-embedded Sections) (IHC (p))

Product Details

Immunogen:	Recombinant protein encompassing a sequence within the center region of human TBCC. The exact sequence is proprietary.
Isotype:	IgG
Cross-Reactivity:	Human, Mouse
Characteristics:	Rabbit Polyclonal antibody to TBCC (tubulin folding cofactor C) TBCC antibody [N1C3]
Purification:	Purified by antigen-affinity chromatography.

Target Details

Target:	TBCC
Alternative Name:	tubulin folding cofactor C (TBCC Products)

Target Details

Background: Cofactor C is one of four proteins (cofactors A, D, E, and C) involved in the pathway leading to correctly folded beta-tubulin from folding intermediates. Cofactors A and D are believed to play a role in capturing and stabilizing beta-tubulin intermediates in a quasi-native confirmation. Cofactor E binds to the cofactor D/beta-tubulin complex, interaction with cofactor C then causes the release of beta-tubulin polypeptides that are committed to the native state.

Molecular Weight: 39 kDa

Gene ID: 6903

UniProt: [Q15814](#)

Application Details

Application Notes: WB: 1:500-1:3000. IHC-P: 1:100-1:1000. Optimal dilutions/concentrations should be determined by the researcher. Not tested in other applications.

Comment: Positive Control: A431 , H1299 , NIH-3T3

Restrictions: For Research Use only

Handling

Format: Liquid

Concentration: 0.82 mg/mL

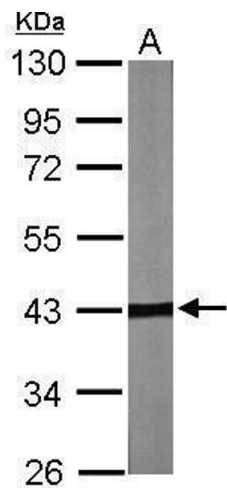
Buffer: 0.1M Tris-Glycine (pH 7), 10 % Glycerol, 0.01 % Thimerosal

Preservative: Thimerosal (Merthiolate)

Precaution of Use: This product contains Thimerosal (Merthiolate): a POISONOUS AND HAZARDOUS SUBSTANCE which should be handled by trained staff only.

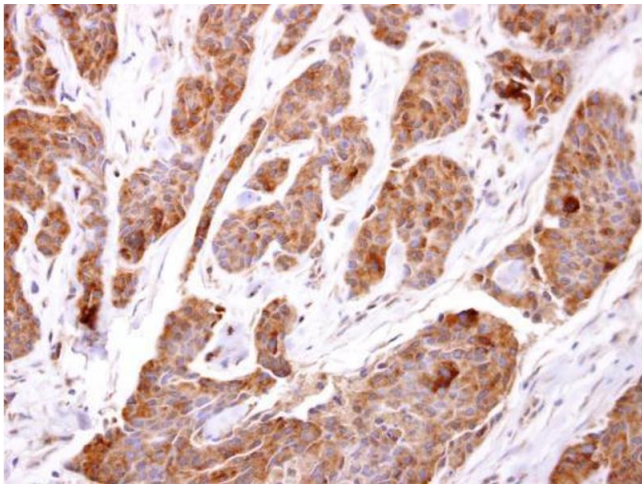
Storage: 4 °C,-20 °C

Storage Comment: Store as concentrated solution. Centrifuge briefly prior to opening vial. For short-term storage (1-2 weeks), store at 4°C. For long-term storage, aliquot and store at -20°C or below. Avoid multiple freeze-thaw cycles.



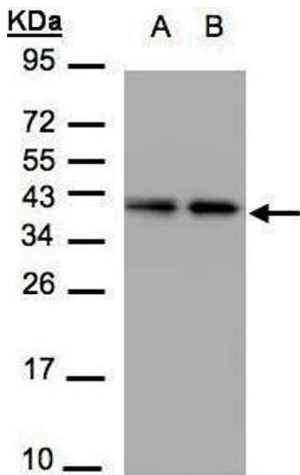
Western Blotting

Image 1. WB Image Sample (30 ug of whole cell lysate) A: NIH-3T3 10% SDS PAGE antibody diluted at 1:2000



Immunohistochemistry

Image 2. IHC-P Image TBCC antibody [N1C3] detects TBCC protein at cytosol on human breast carcinoma by immunohistochemical analysis. Sample: Paraffin-embedded human breast carcinoma. TBCC antibody [N1C3] , dilution: 1:500.



Western Blotting

Image 3. WB Image Sample(30 µg of whole cell lysate) A:A431, B:H1299 12% SDS PAGE antibody diluted at 1:1500