

Datasheet for ABIN2856230

anti-PIGK antibody

3 Images



[Go to Product page](#)

Overview

Quantity:	100 µL
Target:	PIGK (GPI8)
Reactivity:	Human
Host:	Rabbit
Clonality:	Polyclonal
Conjugate:	This PIGK antibody is un-conjugated
Application:	Western Blotting (WB), Immunohistochemistry (Paraffin-embedded Sections) (IHC (p))

Product Details

Immunogen:	Recombinant protein encompassing a sequence within the center region of human PIGK. The exact sequence is proprietary.
Isotype:	IgG
Cross-Reactivity:	Human, Mouse
Characteristics:	Rabbit Polyclonal antibody to PIGK (phosphatidylinositol glycan anchor biosynthesis, class K) PIGK antibody [N1C2]
Purification:	Purified by antigen-affinity chromatography.

Target Details

Target:	PIGK (GPI8)
Alternative Name:	phosphatidylinositol glycan anchor biosynthesis class K (GPI8 Products)

Target Details

Background: This gene encodes a member of the cysteine protease family C13 that is involved in glycosylphosphatidylinositol (GPI)-anchor biosynthesis. The GPI-anchor is a glycolipid found on many blood cells and serves to anchor proteins to the cell surface. This protein is a member of the multisubunit enzyme, GPI transamidase and is thought to be its enzymatic component. GPI transamidase mediates GPI anchoring in the endoplasmic reticulum, by catalyzing the transfer of fully assembled GPI units to proteins.

Cellular Localization: Endoplasmic reticulum membrane, Single-pass type I membrane protein

Molecular Weight: 45 kDa

Gene ID: 10026

UniProt: [Q92643](#)

Application Details

Application Notes: WB: 1:500-1:3000. IHC-P: 1:100-1:1000. Optimal dilutions/concentrations should be determined by the researcher. Not tested in other applications.

Comment: Positive Control: Mouse brain , 293T

Restrictions: For Research Use only

Handling

Format: Liquid

Concentration: 0.74 mg/mL

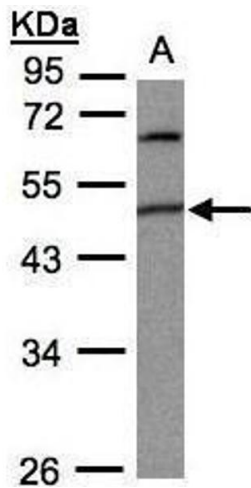
Buffer: 0.1M Tris-Glycine (pH 7), 10 % Glycerol, 0.01 % Thimerosal

Preservative: Thimerosal (Merthiolate)

Precaution of Use: This product contains Thimerosal (Merthiolate): a POISONOUS AND HAZARDOUS SUBSTANCE which should be handled by trained staff only.

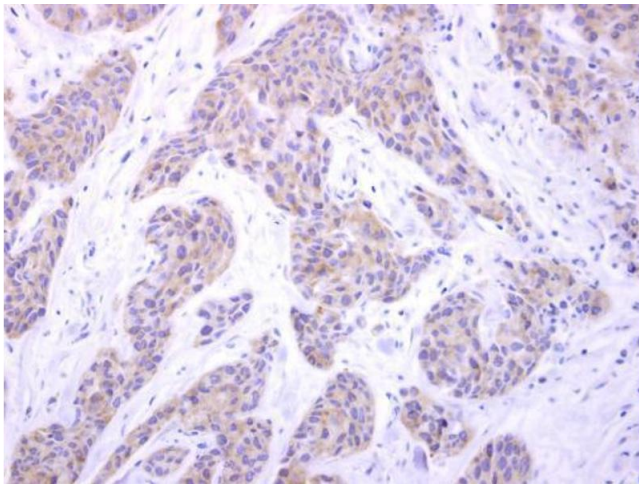
Storage: 4 °C,-20 °C

Storage Comment: Store as concentrated solution. Centrifuge briefly prior to opening vial. For short-term storage (1-2 weeks), store at 4°C. For long-term storage, aliquot and store at -20°C or below. Avoid multiple freeze-thaw cycles.



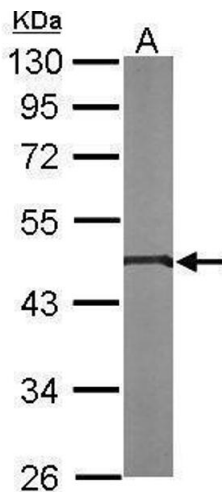
Western Blotting

Image 1. WB Image Sample(30 ug whole cell lysate) A:293T
10% SDS PAGE antibody diluted at 1:1000



Immunohistochemistry

Image 2. IHC-P Image PIGK antibody [N1C2] detects PIGK protein at cytosol on human breast carcinoma by immunohistochemical analysis. Sample: Paraffin-embedded human breast carcinoma. PIGK antibody [N1C2] , dilution: 1:500.



Western Blotting

Image 3. WB Image Sample (50 ug of whole cell lysate) A:
Mouse brain 10% SDS PAGE antibody diluted at 1:1000