

Datasheet for ABIN2856232
anti-WNT11 antibody (Center)[Go to Product page](#)

7 Images

2 Publications

Overview

Quantity:	100 µL
Target:	WNT11
Binding Specificity:	Center
Reactivity:	Human, Mouse
Host:	Rabbit
Clonality:	Polyclonal
Conjugate:	This WNT11 antibody is un-conjugated
Application:	Western Blotting (WB), Immunohistochemistry (IHC), Immunocytochemistry (ICC), Immunohistochemistry (Paraffin-embedded Sections) (IHC (p)), Immunofluorescence (IF)

Product Details

Immunogen:	Recombinant protein encompassing a sequence within the center region of human WNT11. The exact sequence is proprietary.
Isotype:	IgG
Cross-Reactivity:	Chicken, Rat (Rattus), Xenopus laevis, Cow (Bovine)
Cross-Reactivity (Details):	Chicken (85 %), Rat (96 %), Xenopus laevis (81 %), Bovine (98 %)
Characteristics:	Rabbit Polyclonal antibody to WNT11 (wingless-type MMTV integration site family, member 11) WNT11 antibody
Purification:	Purified by antigen-affinity chromatography.

Target Details

Target:	WNT11
Alternative Name:	WNT11 (WNT11 Products)
Background:	<p>The WNT gene family consists of structurally related genes which encode secreted signaling proteins. These proteins have been implicated in oncogenesis and in several developmental processes, including regulation of cell fate and patterning during embryogenesis. This gene is a member of the WNT gene family. It encodes a protein which shows 97 % , 85 % , and 63 % amino acid identity with mouse, chicken, and Xenopus Wnt11 protein, respectively. This gene may play roles in the development of skeleton, kidney and lung, and is considered to be a plausible candidate gene for High Bone Mass Syndrome.</p> <p>Cellular Localization: Secreted , extracellular space , extracellular matrix</p>
Molecular Weight:	39 kDa
Gene ID:	7481
Pathways:	WNT Signaling , Cell-Cell Junction Organization

Application Details

Application Notes:	<p>Suggested dilution Reference ICC/IF 1:100-1:1000* Immunohistochemistry Assay-dependent dilution IHC (Formalin-fixed paraffin-embedded sections) 1:100-1:1000* Western blot 1:500-1:3000* Not tested in other applications. *Optimal dilutions/concentrations should be determined by the researcher.Suggested dilutionReferenceICC/IF1:100-1:1000* Immunohistochemistry Assay-dependent dilution IHC (Formalin-fixed paraffin-embedded sections)1:100-1:1000* Western blot1:500-1:3000*</p>
Comment:	Positive Control: 293T , A431 , HeLa , HepG2 , mouse heart
Restrictions:	For Research Use only

Handling

Format:	Liquid
Concentration:	1 mg/mL
Buffer:	1XPBS, 20 % Glycerol (pH 7). 0.025 % ProClin 300 was added as a preservative.
Preservative:	ProClin
Precaution of Use:	This product contains ProClin: a POISONOUS AND HAZARDOUS SUBSTANCE which should be

Handling

handled by trained staff only.

Storage: -20 °C

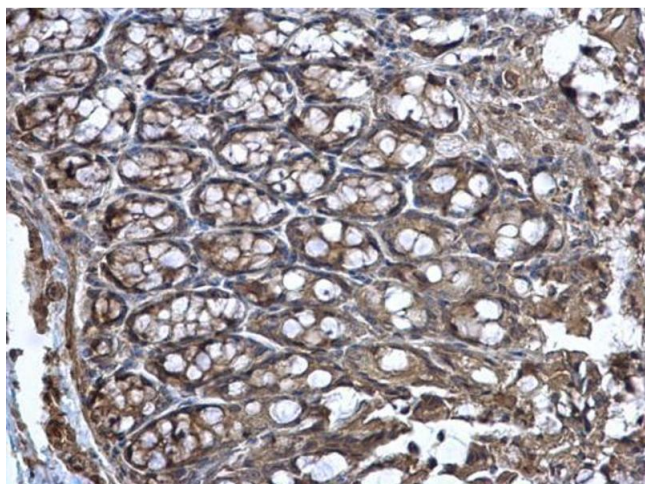
Storage Comment: Keep as concentrated solution. Aliquot and store at -20°C or below. Avoid multiple freeze-thaw cycles.

Publications

Product cited in: Glaeser, Urban, Fenech, Voloshanenko, Kranz, Lari, Christianson, Boutros: "ERAD-dependent control of the Wnt secretory factor Evi." in: **The EMBO journal**, Vol. 37, Issue 4, (2018) ([PubMed](#)).

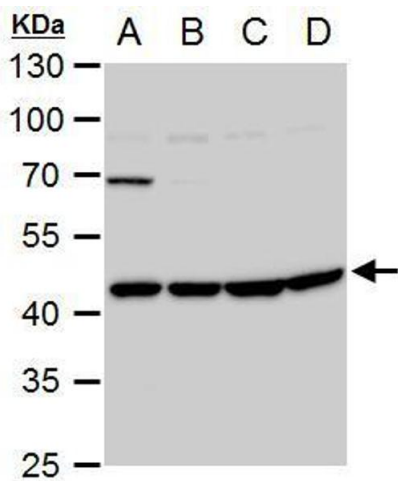
Jain, Noordam, Hoshi, Vallania, Conrad: "Validating single-cell genomics for the study of renal development." in: **Kidney international**, Vol. 86, Issue 5, pp. 1049-55, (2015) ([PubMed](#)).

Images



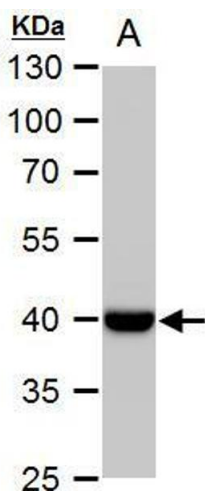
Immunohistochemistry

Image 1. IHC-P Image WNT11 antibody detects WNT11 protein at secreted on mouse colon by immunohistochemical analysis. Sample: Paraffin-embedded mouse colon. WNT11 antibody , dilution: 1:500.



Western Blotting

Image 2. WB Image WNT11 antibody detects WNT11 protein by western blot analysis. A. 30 µg 293T whole cell extract B. 30 µg A431 whole cell extract C. 30 µg HeLa whole cell extract D. 30 µg HepG2 whole cell extract 12 % SDS-PAGE WNT11 antibody , dilution: 1:1000



Western Blotting

Image 3. WB Image WNT11 antibody detects WNT11 protein by western blot analysis. A. 50 µg mouse heart extract 10 % SDS-PAGE WNT11 antibody , dilution: 1:1000

Please check the [product details page](#) for more images. Overall 7 images are available for ABIN2856232.