

Datasheet for ABIN2856237

anti-PHEX antibody[Go to Product page](#)**1** Image

Overview

Quantity:	100 µL
Target:	PHEX
Reactivity:	Human
Host:	Rabbit
Clonality:	Polyclonal
Conjugate:	This PHEX antibody is un-conjugated
Application:	Western Blotting (WB)

Product Details

Immunogen:	Recombinant protein encompassing a sequence within the center region of human PHEX. The exact sequence is proprietary.
Isotype:	IgG
Cross-Reactivity:	Human
Characteristics:	Rabbit polyclonal antibody to PHEX (phosphate regulating endopeptidase homolog, X-linked) PHEX antibody [N1N3]
Purification:	Purified by antigen-affinity chromatography.

Target Details

Target:	PHEX
Alternative Name:	phosphate regulating endopeptidase homolog X-linked (PHEX Products)

Target Details

Background: The protein encoded by this gene is a transmembrane endopeptidase that belongs to the type II integral membrane zinc-dependent endopeptidase family. The protein is thought to be involved in bone and dentin mineralization and renal phosphate reabsorption. Mutations in this gene cause X-linked hypophosphatemic rickets.

Cellular Localization: Membrane, Single-pass type II membrane protein

Molecular Weight: 86 kDa

Gene ID: 5251

UniProt: [P78562](#)

Application Details

Application Notes: WB: 1:500-1:3000. Optimal dilutions/concentrations should be determined by the researcher.
Not tested in other applications.

Comment: Positive Control: Molt-4

Restrictions: For Research Use only

Handling

Format: Liquid

Concentration: 0.99 mg/mL

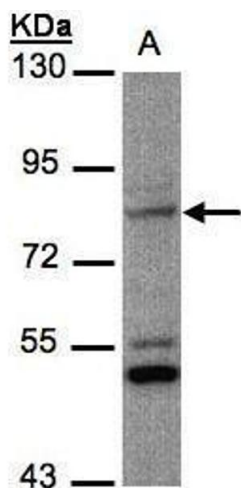
Buffer: 0.1M Tris-Glycine (pH 7), 10 % Glycerol, 0.01 % Thimerosal

Preservative: Thimerosal (Merthiolate)

Precaution of Use: This product contains Thimerosal (Merthiolate): a POISONOUS AND HAZARDOUS SUBSTANCE which should be handled by trained staff only.

Storage: 4 °C,-20 °C

Storage Comment: Store as concentrated solution. Centrifuge briefly prior to opening vial. For short-term storage (1-2 weeks), store at 4°C. For long-term storage, aliquot and store at -20°C or below. Avoid multiple freeze-thaw cycles.



Western Blotting

Image 1. WB Image Sample(30 ug whole cell lysate)
A:MOLT4 , 7.5% SDS PAGE antibody diluted at 1:1000