

Datasheet for ABIN2856247

anti-ADPGK antibody**2** Images[Go to Product page](#)

Overview

Quantity:	100 µL
Target:	ADPGK
Reactivity:	Human
Host:	Rabbit
Clonality:	Polyclonal
Conjugate:	This ADPGK antibody is un-conjugated
Application:	Western Blotting (WB), Immunohistochemistry (Paraffin-embedded Sections) (IHC (p))

Product Details

Immunogen:	Recombinant protein encompassing a sequence within the center region of human ADPGK. The exact sequence is proprietary.
Isotype:	IgG
Cross-Reactivity:	Human
Characteristics:	Rabbit Polyclonal antibody to ADPGK (ADP-dependent glucokinase) ADPGK antibody [N2C3]
Purification:	Purified by antigen-affinity chromatography.

Target Details

Target:	ADPGK
Alternative Name:	ADP dependent glucokinase (ADPGK Products)

Target Details

Background: ADPGK (EC 2.7.1.147) catalyzes the ADP-dependent phosphorylation of glucose to glucose-6-phosphate and may play a role in glycolysis, possibly during ischemic conditions (Ronimus and Morgan, 2004 [PubMed 14975750]).[supplied by OMIM]

Cellular Localization: Secreted

Molecular Weight: 54 kDa

Gene ID: 83440

UniProt: [Q9BRR6](#)

Application Details

Application Notes: WB: 1:500-1:3000. IHC-P: 1:100-1:1000. Optimal dilutions/concentrations should be determined by the researcher. Not tested in other applications.

Comment: Positive Control: HeLaS3 , Molt-4

Restrictions: For Research Use only

Handling

Format: Liquid

Concentration: 0.99 mg/mL

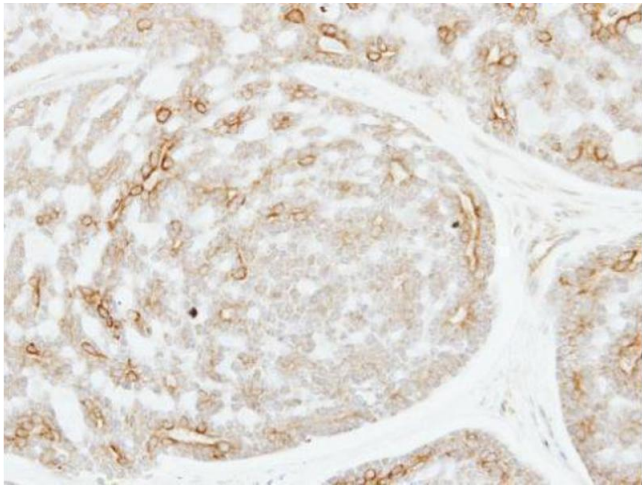
Buffer: 0.1M Tris-Glycine (pH 7), 10 % Glycerol, 0.01 % Thimerosal

Preservative: Thimerosal (Merthiolate)

Precaution of Use: This product contains Thimerosal (Merthiolate): a POISONOUS AND HAZARDOUS SUBSTANCE which should be handled by trained staff only.

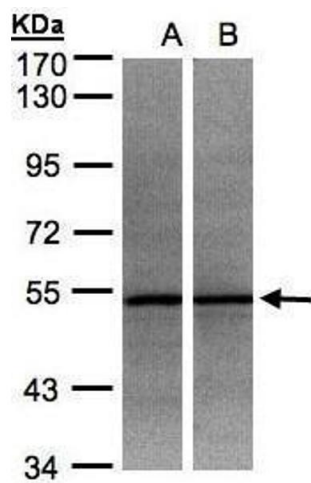
Storage: 4 °C,-20 °C

Storage Comment: Store as concentrated solution. Centrifuge briefly prior to opening vial. For short-term storage (1-2 weeks), store at 4°C. For long-term storage, aliquot and store at -20°C or below. Avoid multiple freeze-thaw cycles.



Immunohistochemistry

Image 1. IHC-P Image Immunohistochemical analysis of paraffin-embedded human breast cancer, using ADPGK, antibody at 1:250 dilution.



Western Blotting

Image 2. WB Image Sample(30 ug whole cell lysate) A:HeLa S3, B:MOLT4 , 7.5% SDS PAGE antibody diluted at 1:500