

Datasheet for ABIN2856252

anti-Adenylate Kinase 1 antibody

3 Images

[Go to Product page](#)

Overview

Quantity:	100 µL
Target:	Adenylate Kinase 1 (AK1)
Reactivity:	Human
Host:	Rabbit
Clonality:	Polyclonal
Conjugate:	This Adenylate Kinase 1 antibody is un-conjugated
Application:	Western Blotting (WB), Immunohistochemistry (Paraffin-embedded Sections) (IHC (p))

Product Details

Immunogen:	Recombinant protein encompassing a sequence within the center region of human Adenylate kinase 1. The exact sequence is proprietary.
Isotype:	IgG
Cross-Reactivity:	Human, Mouse
Characteristics:	Rabbit Polyclonal antibody to Adenylate kinase 1 (adenylate kinase 1) Adenylate kinase 1 antibody [N1C3]
Purification:	Purified by antigen-affinity chromatography.
Grade:	KO Validated

Target Details

Target:	Adenylate Kinase 1 (AK1)
---------	--------------------------

Target Details

Alternative Name:	adenylate kinase 1 (AK1 Products)
Background:	<p>Adenylate kinase is an enzyme involved in regulating the adenine nucleotide composition within a cell by catalyzing the reversible transfer of phosphate group among adinine nucleotides.</p> <p>Three isozymes of adenylate kinase have been identified in vertebrates, adenylate isozyme 1 (AK1), 2 (AK2) and 3 (AK3). AK1 is found in the cytosol of skeletal muscle, brain and erythrocytes, whereas AK2 and AK3 are found in the mitochondria of other tissues including liver and heart. AK1 was identified because of its association with a rare genetic disorder causing nonspherocytic hemolytic anemia where a mutation in the AK1 gene was found to reduce the catalytic activity of the enzyme.</p> <p>Cellular Localization: Cytoplasm</p>
Molecular Weight:	22 kDa
Gene ID:	203
UniProt:	P00568
Pathways:	Nucleotide Phosphorylation , Ribonucleoside Biosynthetic Process

Application Details

Application Notes:	WB: 1:500-1:3000. IHC-P: 1:100-1:1000. Optimal dilutions/concentrations should be determined by the researcher. Not tested in other applications.
Comment:	Positive Control: Mouse brown adipose tissue Validation: KO/KD
Restrictions:	For Research Use only

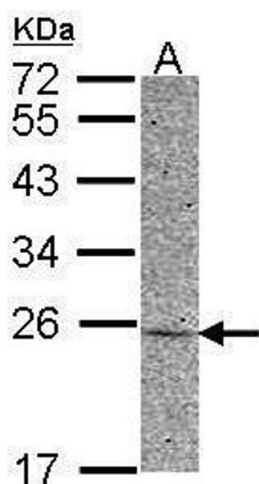
Handling

Format:	Liquid
Concentration:	0.4 mg/mL
Buffer:	0.1M Tris-Glycine (pH 7), 10 % Glycerol, 0.01 % Thimerosal
Preservative:	Thimerosal (Merthiolate)
Precaution of Use:	This product contains Thimerosal (Merthiolate): a POISONOUS AND HAZARDOUS SUBSTANCE which should be handled by trained staff only.
Storage:	4 °C, -20 °C

Handling

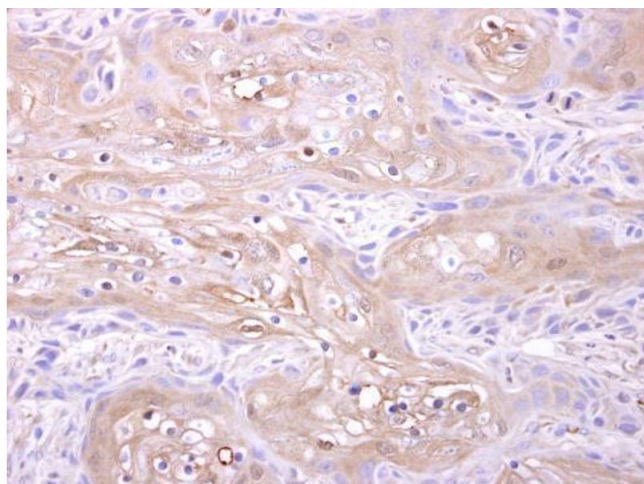
Storage Comment: Store as concentrated solution. Centrifuge briefly prior to opening vial. For short-term storage (1-2 weeks), store at 4°C. For long-term storage, aliquot and store at -20°C or below. Avoid multiple freeze-thaw cycles.

Images



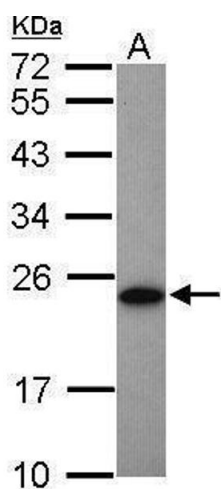
Western Blotting

Image 1. WB Image Sample (30 ug of whole cell lysate) A: HCT116 12% SDS PAGE antibody diluted at 1:500



Immunohistochemistry

Image 2. IHC-P Image Adenylate kinase 1 antibody [N1C3] detects Adenylate kinase 1 protein at cytosol on Ca922 xenograft by immunohistochemical analysis. Sample: Paraffin-embedded Ca922 xenograft. Adenylate kinase 1 antibody [N1C3], dilution: 1:500.



Western Blotting

Image 3. WB Image Sample (50 ug of whole cell lysate) A: Mouse brown adipose tissue 12% SDS PAGE antibody diluted at 1:1000