



[Go to Product page](#)

Datasheet for ABIN2856255

anti-IDI1 antibody

2 Images

Overview

Quantity:	100 µL
Target:	IDI1
Reactivity:	Human
Host:	Rabbit
Clonality:	Polyclonal
Conjugate:	This IDI1 antibody is un-conjugated
Application:	Western Blotting (WB), Immunohistochemistry (Paraffin-embedded Sections) (IHC (p))

Product Details

Immunogen:	Recombinant protein encompassing a sequence within the center region of human IDI1. The exact sequence is proprietary.
Isotype:	IgG
Cross-Reactivity:	Human
Characteristics:	Rabbit polyclonal antibody to IDI1 (isopentenyl-diphosphate delta isomerase 1) IDI1 antibody [N1C2]
Purification:	Purified by antigen-affinity chromatography.

Target Details

Target:	IDI1
Alternative Name:	isopentenyl-diphosphate delta isomerase 1 (IDI1 Products)

Target Details

Background: IDI1 encodes a peroxisomally-localized enzyme that catalyzes the interconversion of isopentenyl diphosphate (IPP) to its highly electrophilic isomer, dimethylallyl diphosphate (DMAPP), which are the substrates for the successive reaction that results in the synthesis of farnesyl diphosphate and, ultimately, cholesterol. It has been shown in peroxisomal deficiency diseases such as Zellweger syndrome and neonatal adrenoleukodystrophy that there is reduction in IPP isomerase activity.

Cellular Localization: Peroxisome

Molecular Weight: 26 kDa

Gene ID: 3422

UniProt: [Q13907](#)

Application Details

Application Notes: WB: 1:500-1:3000. IHC-P: 1:100-1:1000. Optimal dilutions/concentrations should be determined by the researcher. Not tested in other applications.

Comment: Positive Control: Molt-4

Restrictions: For Research Use only

Handling

Format: Liquid

Concentration: 0.65 mg/mL

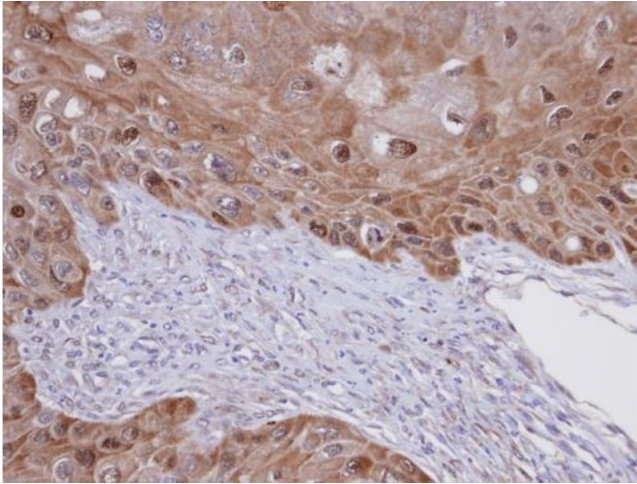
Buffer: 0.1M Tris-Glycine (pH 7), 10 % Glycerol, 0.01 % Thimerosal

Preservative: Thimerosal (Merthiolate)

Precaution of Use: This product contains Thimerosal (Merthiolate): a POISONOUS AND HAZARDOUS SUBSTANCE which should be handled by trained staff only.

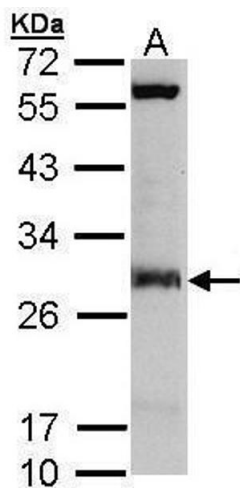
Storage: 4 °C,-20 °C

Storage Comment: Store as concentrated solution. Centrifuge briefly prior to opening vial. For short-term storage (1-2 weeks), store at 4°C. For long-term storage, aliquot and store at -20°C or below. Avoid multiple freeze-thaw cycles.



Immunohistochemistry

Image 1. IHC-P Image Immunohistochemical analysis of paraffin-embedded SCC15 xenograft, using IDI1 , antibody at 1:100 dilution.



Western Blotting

Image 2. WB Image Sample (30 ug of whole cell lysate) A: Molt-4 , 12% SDS PAGE antibody diluted at 1:3000