

Datasheet for ABIN2856256

anti-PTPN1 antibody**2** Images[Go to Product page](#)

Overview

Quantity:	100 µL
Target:	PTPN1
Reactivity:	Human
Host:	Rabbit
Clonality:	Polyclonal
Conjugate:	This PTPN1 antibody is un-conjugated
Application:	Western Blotting (WB), Immunohistochemistry (Paraffin-embedded Sections) (IHC (p))

Product Details

Immunogen:	Recombinant protein encompassing a sequence within the center region of human PTP1B. The exact sequence is proprietary.
Isotype:	IgG
Cross-Reactivity:	Human
Characteristics:	Rabbit polyclonal antibody to PTP1B (protein tyrosine phosphatase, non-receptor type 1) PTP1B antibody [N1N3]
Purification:	Purified by antigen-affinity chromatography.

Target Details

Target:	PTPN1
Alternative Name:	protein tyrosine phosphatase non-receptor type 1 (PTPN1 Products)

Target Details

Background:	<p>The protein encoded by this gene is the founding member of the protein tyrosine phosphatase (PTP) family, which was isolated and identified based on its enzymatic activity and amino acid sequence. PTPs catalyze the hydrolysis of the phosphate monoesters specifically on tyrosine residues. Members of the PTP family share a highly conserved catalytic motif, which is essential for the catalytic activity. PTPs are known to be signaling molecules that regulate a variety of cellular processes including cell growth, differentiation, mitotic cycle, and oncogenic transformation. This PTP has been shown to act as a negative regulator of insulin signaling by dephosphorylating the phosphotyrosine residues of insulin receptor kinase. This PTP was also reported to dephosphorylate epidermal growth factor receptor kinase, as well as JAK2 and TYK2 kinases, which implicated the role of this PTP in cell growth control, and cell response to interferon stimulation.</p> <p>Cellular Localization: Endoplasmic reticulum membrane, Peripheral membrane protein, Cytoplasmic side</p>
Molecular Weight:	50 kDa
Gene ID:	5770
UniProt:	P18031
Pathways:	TLR Signaling , Response to Growth Hormone Stimulus , ER-Nucleus Signaling , Platelet-derived growth Factor Receptor Signaling

Application Details

Application Notes:	WB: 1:500-1:3000. IHC-P: 1:100-1:1000. Optimal dilutions/concentrations should be determined by the researcher. Not tested in other applications.
Comment:	Positive Control: Raji
Restrictions:	For Research Use only

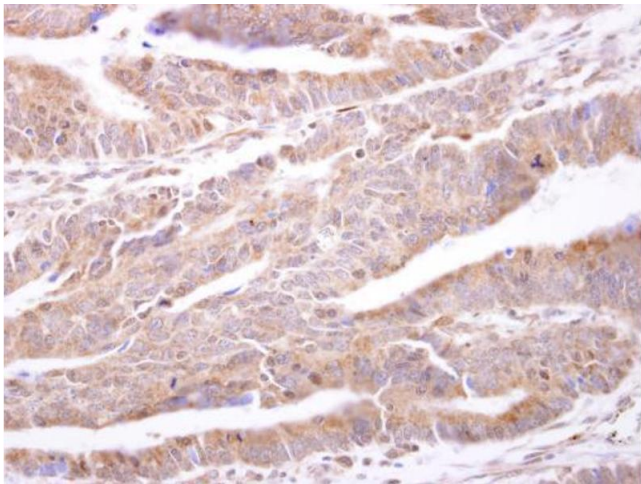
Handling

Format:	Liquid
Concentration:	1 mg/mL
Buffer:	0.1M Tris-Glycine (pH 7), 10 % Glycerol, 0.01 % Thimerosal
Preservative:	Thimerosal (Merthiolate)

Handling

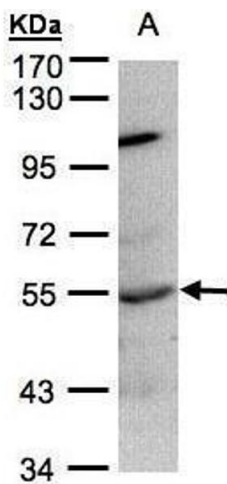
Precaution of Use:	This product contains Thimerosal (Merthiolate): a POISONOUS AND HAZARDOUS SUBSTANCE which should be handled by trained staff only.
Storage:	4 °C,-20 °C
Storage Comment:	Store as concentrated solution. Centrifuge briefly prior to opening vial. For short-term storage (1-2 weeks), store at 4°C. For long-term storage, aliquot and store at -20°C or below. Avoid multiple freeze-thaw cycles.

Images



Immunohistochemistry

Image 1. IHC-P Image PTP1B antibody [N1N3] detects PTP1B protein at cytosol on human colon carcinoma by immunohistochemical analysis. Sample: Paraffin-embedded human colon carcinoma. PTP1B antibody [N1N3] , dilution: 1:500.



Western Blotting

Image 2. WB Image Sample(30 ug whole cell lysate) A:Raji , 7.5% SDS PAGE antibody diluted at 1:500